



Juniper Drive, SW18  
£599,950

Waterview  


A fantastic, two bedroom apartment that has been recently refurbished to the highest standard with a private balcony looking towards The Thames set in this award winning riverside development.

Battersea Reach is an exclusive, award winning riverside development located moments from Wandsworth Town and Clapham Junction.





Accommodation is made up of entrance hall leading to a beautifully presented open plan double reception room with newly fitted wooden flooring, space for dining leading to the river facing balcony and a stunning, integrated kitchen.

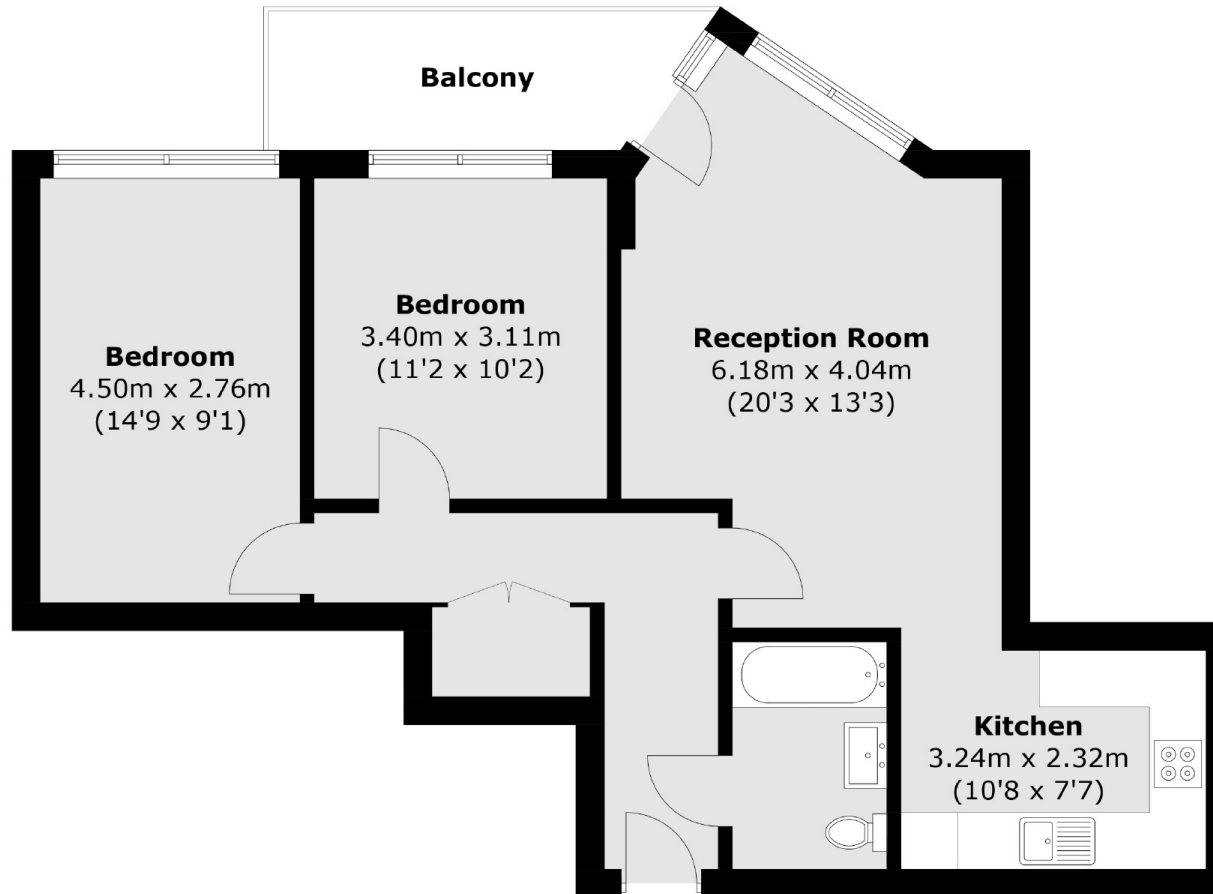
There are two double bedrooms with floor to ceiling windows and a luxury family bathroom. The development benefits from an excellent 24 hour concierge service, with parking option available and a resident's gym. There is a range of shops and restaurants within the development and the popular Old York Road nearby.

### Features

- Stunning Apartment
- Two Double Bedrooms
- Private Balcony
- 24 hr Concierge
- River Views
- Recently Refurbished



# Juniper Drive, Battersea, SW18



Total area (approx.): 67.2 sq. m (723.3 sq. ft)  
Balcony : 6.3 sq. m (67.8 sq. ft)

## Contact

To arrange a viewing call our office on the number below or visit our website.



Energy Rating: B. We aim to make our particulars both accurate and reliable. However they are not guaranteed; nor do they form part of an offer or contract. If you require clarification on any points then please contact us, especially if you're traveling some distance to view. Please note that appliances and heating systems have not been tested and therefore no warranties can be given as to their good working order.

