



Carlyle Court, SW10  
£999,950

Waterview



A beautifully presented three bedroom, split level penthouse with spacious roof terrace and balcony set within the prestigious Chelsea Harbour development.

The prestigious Chelsea Harbour Development is located by The Thames, just off Lots Road in Chelsea.







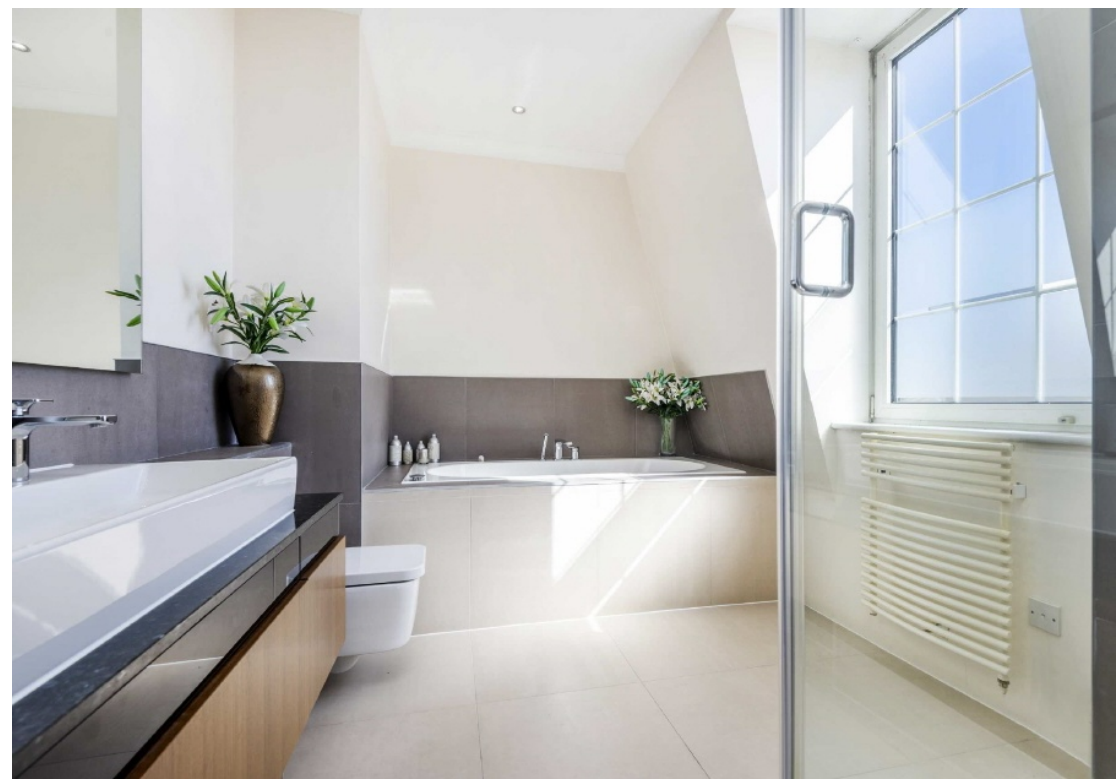
Accommodation is made up of entrance hall leading to a large double reception room with solid wood flooring and space for dining. The living space opens onto a stylish, integrated kitchen with access onto a spacious roof terrace and entertaining area which overlooks the pretty internal courtyard gardens. Also on this level is a double bedroom, single bedroom with access to roof terrace and shower room.

On the top floor is an impressive principal bedroom suite with high ceilings, luxury en-suite bathroom, walk-in wardrobe and access to a further terrace with garden aspect.

The apartment is situated in a lift serviced block with excellent concierge service and secure underground parking space. Available with no onward chain.

### Features

Beautiful Penthouse  
Three Bedrooms  
Two Bathrooms  
Roof Terrace  
Excellent Concierge  
Secure Parking





# Carlyle Court, Chelsea Harbour, SW10



Total area (approx): 109.50 sq m (1179 sq. ft)

Terrace total area (approx): 31.21 sq m (336 sq. ft)

## Contact

To arrange a viewing call our office on the number below or visit our website.



Energy Rating: B. We aim to make our particulars both accurate and reliable. However they are not guaranteed; nor do they form part of an offer or contract. If you require clarification on any points then please contact us, especially if you're traveling some distance to view. Please note that appliances and heating systems have not been tested and therefore no warranties can be given as to their good working order.



