



Juniper Drive, SW18
£520,000

Waterview


A beautiful, recently refurbished two double bedroom apartment with private balcony looking towards The Thames in this exclusive riverside development.

Battersea Reach is an award winning development located moments from Wandsworth Town & Clapham Junction.



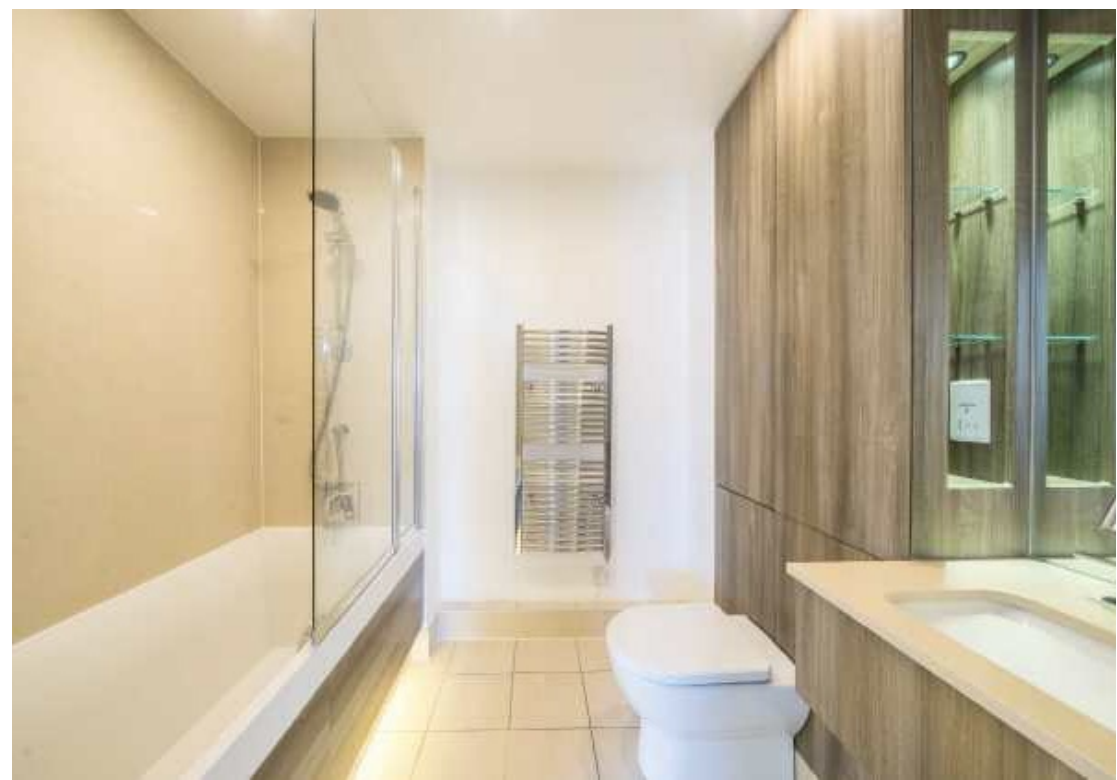


Accommodation is made up of entrance hallway leading to a bright and spacious open plan living space with dining area, reception area and a stylish new kitchen with breakfast bar. The principal double bedroom has built-in wardrobes and en-suite. There is a further double bedroom with access to balcony and a family bathroom.

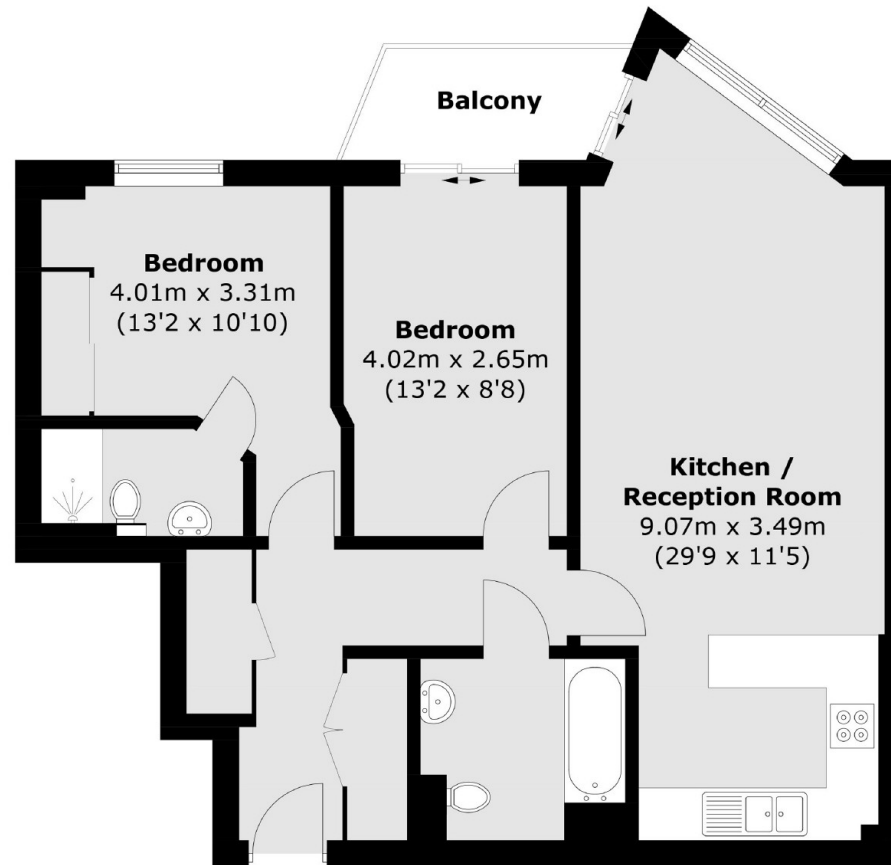
The apartment benefits from beautifully kept communal gardens with direct access to the river, excellent concierge 24hr service and option for secure underground parking. There is a selection of shops, restaurants and a resident's gym.

Features

Riverside Apartment
Two Double Bedrooms
Two Bathrooms
Private Balcony
No Chain
24hr Concierge



Juniper Drive, Wandsworth, SW18



Total area (approx.): 68.4 sq. m (736.2 sq. ft)
Balcony: 3.6 sq. m (38.7 sq. ft)

Contact

To arrange a viewing call our office on the number below or visit our website.



Energy Rating: B. We aim to make our particulars both accurate and reliable. However they are not guaranteed; nor do they form part of an offer or contract. If you require clarification on any points then please contact us, especially if you're traveling some distance to view. Please note that appliances and heating systems have not been tested and therefore no warranties can be given as to their good working order.

