



The Boulevard, SW6
£650,000

Waterview


A contemporary two bedroom apartment in the sought after Imperial Wharf riverside development complete with river views.

Imperial Wharf station is within the development allowing easy access into Central London. There are also various shops and restaurants.





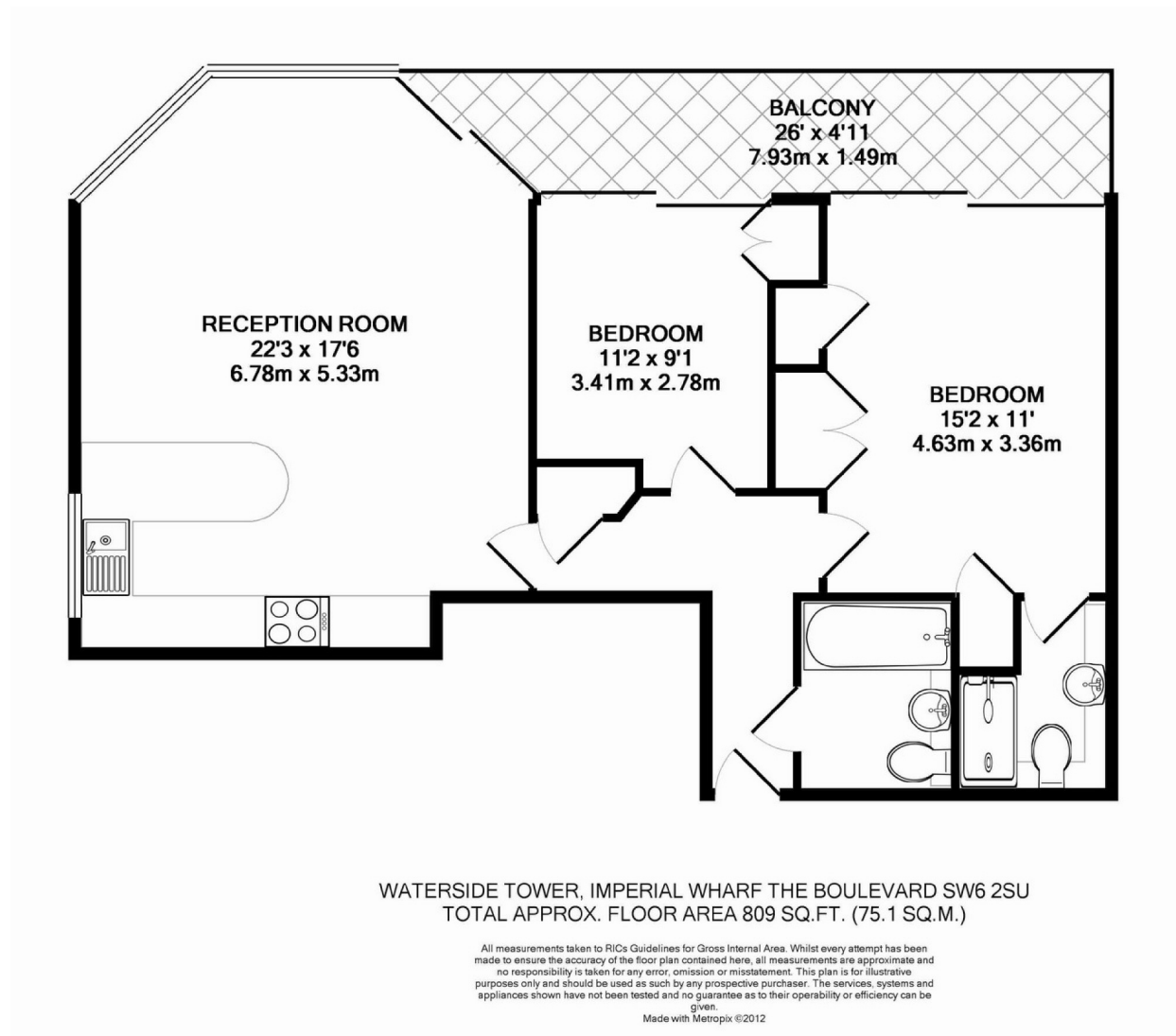
The accommodation comprises an open plan kitchen reception room, with river views and private balcony, large principal double bedroom with en-suite and access to balcony, second double bedroom with door to balcony and family bathroom.

Features

- Two Double Bedrooms
- Open Plan Kitchen
- First Floor Apartment
- Sizeable Balcony
- Riverside View
- Imperial Wharf



The Boulevard, Fulham, SW6



Contact

To arrange a viewing call our office on the number below or visit our website.



Energy Rating: C. We aim to make our particulars both accurate and reliable. However they are not guaranteed; nor do they form part of an offer or contract. If you require clarification on any points then please contact us, especially if you're traveling some distance to view. Please note that appliances and heating systems have not been tested and therefore no warranties can be given as to their good working order.

