



Lombard Road, SW11

£475,000

Waterview

A beautiful one double bedroom apartment on the 21st floor of this prestigious riverside building with large private balcony offering breathtaking views of The Thames and London Beyond.

Lombard Wharf is located overlooking The Thames at Battersea riverside, close to the cafés and restaurants of Battersea Square.





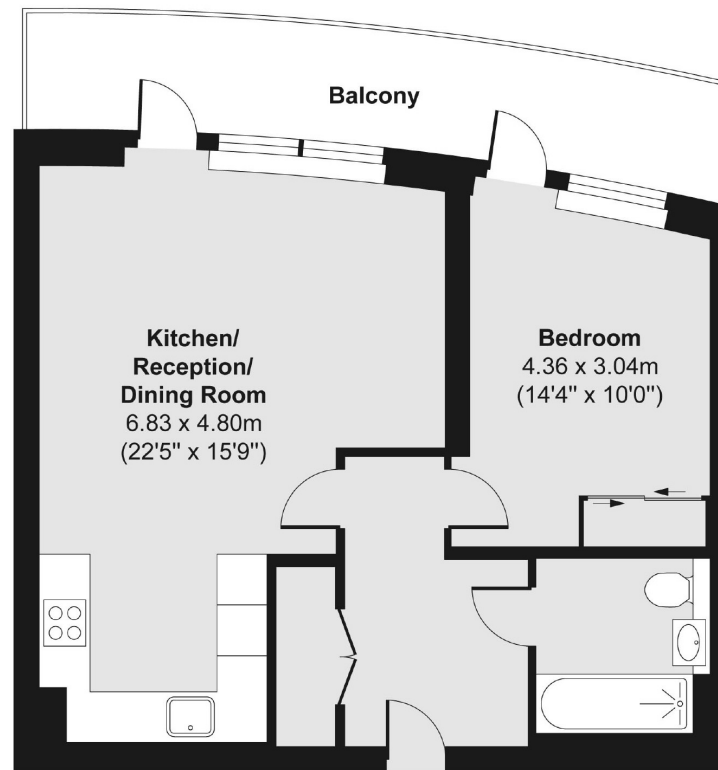
Accommodation is made up of entrance hallway, large reception room with wooden flooring, space for dining, stylish modern kitchen and door to large balcony. The double bedroom has built-in wardrobes and access to the balcony. There is a sleek modern bathroom. The block benefits from an excellent 24hr concierge service and a well equipped resident's gym.

Features

Prestigious Building
Beautifully Presented
Private Balcony
Amazing Views
24hr Concierge
Resident's Gym



Lombard Road, Battersea, SW11



Total area (approx.) 52.30 sq. m (563 sq. ft)
Balcony area (approx.) 11.46 sq. m (123 sq. ft)

Contact

To arrange a viewing call our office on the number below or visit our website.



Regulated
Estate Agent
and Letting Agent

Energy Rating: B. We aim to make our particulars both accurate and reliable. However they are not guaranteed; nor do they form part of an offer or contract. If you require clarification on any points then please contact us, especially if you're traveling some distance to view. Please note that appliances and heating systems have not been tested and therefore no warranties can be given as to their good working order.

