



Carlyle Court, SW10

£699,950

Waterview



A fantastic two bedroom, lift serviced, second floor apartment situated in Carlyle Court, part of the prestigious Chelsea Harbour development. Offered with no onward chain, concierge service, an extended lease and an allocated underground parking space.

Chelsea Harbour is a sought after riverside development located on the River Thames, off Lots Road.





The apartment is made up of a large open plan reception and dining room with access to the full width balcony, a modern kitchen, double bedroom with en-suite, second bedroom and family bathroom.

There is a fantastic concierge service at the entrance of Carlyle Court, an allocated underground parking space and additional underground storage unit.

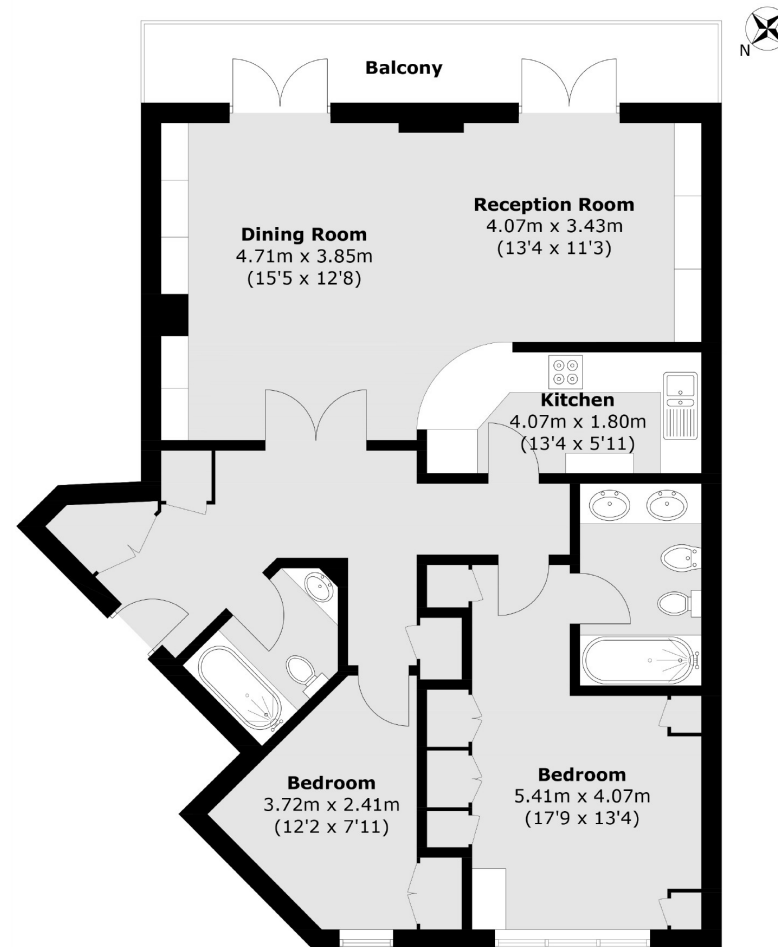
The seller has recently extended the lease to over 178 years.

Features

- Harbour View
- Two Bedrooms
- Allocated Parking Space
- Full Width Balcony
- Two Bathrooms
- Extended Lease



Carlyle Court, Chelsea Harbour, SW10



Total area (approx.): 93.5 sq. m (1,006.4 sq. ft)
Balcony: 9.9 sq. m (106.6 sq. ft)

Contact

To arrange a viewing call our office on the number below or visit our website.



Energy Rating: C. We aim to make our particulars both accurate and reliable. However they are not guaranteed; nor do they form part of an offer or contract. If you require clarification on any points then please contact us, especially if you're traveling some distance to view. Please note that appliances and heating systems have not been tested and therefore no warranties can be given as to their good working order.

