



Carlyle Court, SW10
£2,795,000

Waterview


A spectacular four bedroom penthouse in Chelsea Harbour. This unique apartment has been remodelled to the highest of standards throughout and boasts a mechanical glass roof which can be opened to enjoy al fresco dining and entertaining.

Carlyle Court is an exclusive development in Chelsea Harbour located next to the River Thames. Imperial Wharf railway station and river boats to the city are moments away.





When entering the property you are welcomed by a smart hallway which links perfectly to all the bedrooms and bathrooms the apartment has to offer, as well as a separate utilities room. Up the stairs to the top floor is a 37ft reception room which is flooded with light and a bespoke kitchen ideal for family living.

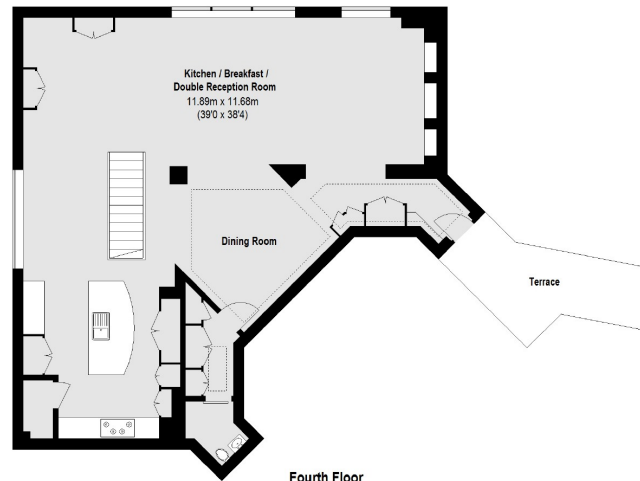
The entire property has been meticulously designed to create one of the most unique apartments in Chelsea and would work wonderfully for a family home or London base.

Features

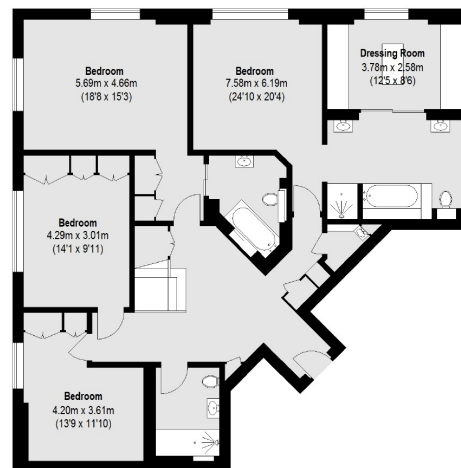
Penthouse Apartment
Interior Designed
Long Leasehold (179
+years)
Underground Parking
Four Bedrooms
Porter



Carlyle Court, Chelsea Harbour, SW10



Fourth Floor



Third Floor

Total area (approx.): 233.39 sq. m (2512 sq. ft)
Terrace: 11.6 sq. m (125 sq. ft)

Contact

To arrange a viewing call our office on the number below or visit our website.



Energy Rating: C. We aim to make our particulars both accurate and reliable. However they are not guaranteed; nor do they form part of an offer or contract. If you require clarification on any points then please contact us, especially if you're traveling some distance to view. Please note that appliances and heating systems have not been tested and therefore no warranties can be given as to their good working order.

