



Battersea Church Road, SW11  
£1,500,000

Waterview  




A beautiful two double bedroom apartment set on the eighth floor of this iconic building with a breathtaking panorama of The Thames and London beyond

Battersea Church Road runs parallel to The Thames, a stones throw from the popular cafés and restaurants at Battersea Square.





Accommodation is made up of a large entrance hall through to a 24' double reception room with space for dining and floor to ceiling full width windows from which to take in this amazing view.

The well appointed kitchen breakfast room has access to a sizeable riverside terrace. A generous principle bedroom has built in wardrobes and en suite. There is a further double bedroom, also with fitted wardrobes and a family bathroom. This prestigious development benefits from an excellent 24 hour concierge service, residents gym/sauna and tennis court.

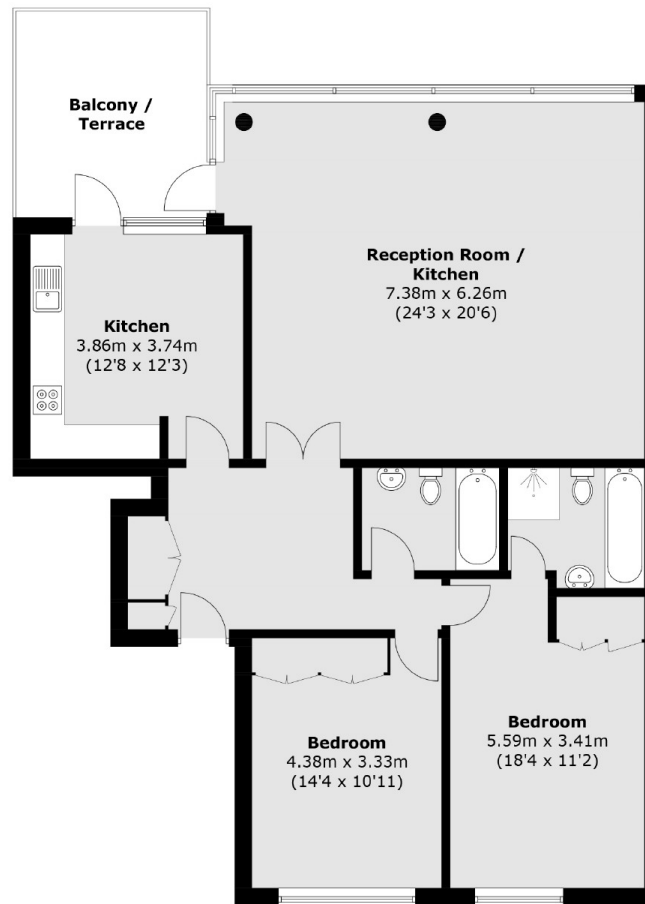
### Features

- Beautiful Apartment
- Iconic Building
- River Views
- Residents Gym
- Private Terrace
- Excellent Concierge





# Battersea Church Road, Montevetro, Battersea Church Road,



**Eighth Floor**

Total area (approx.): 117.6 sq. m (1265.8 sq. ft)  
Balcony / Terrace: 12.1 sq. m (130.2 sq. ft)

## Contact

To arrange a viewing call our office on the number below or visit our website.



Energy Rating: B. We aim to make our particulars both accurate and reliable. However they are not guaranteed; nor do they form part of an offer or contract. If you require clarification on any points then please contact us, especially if you're traveling some distance to view. Please note that appliances and heating systems have not been tested and therefore no warranties can be given as to their good working order.



