



William Morris Way, SW6
£950,000

Waterview


OIEO £950,000

A stunning two double bedroom apartment with lateral space opening onto two river facing balconies and panoramic views.

William Morris Way runs parallel to The Thames next to Imperial Park with the famous Harbour Club opposite.





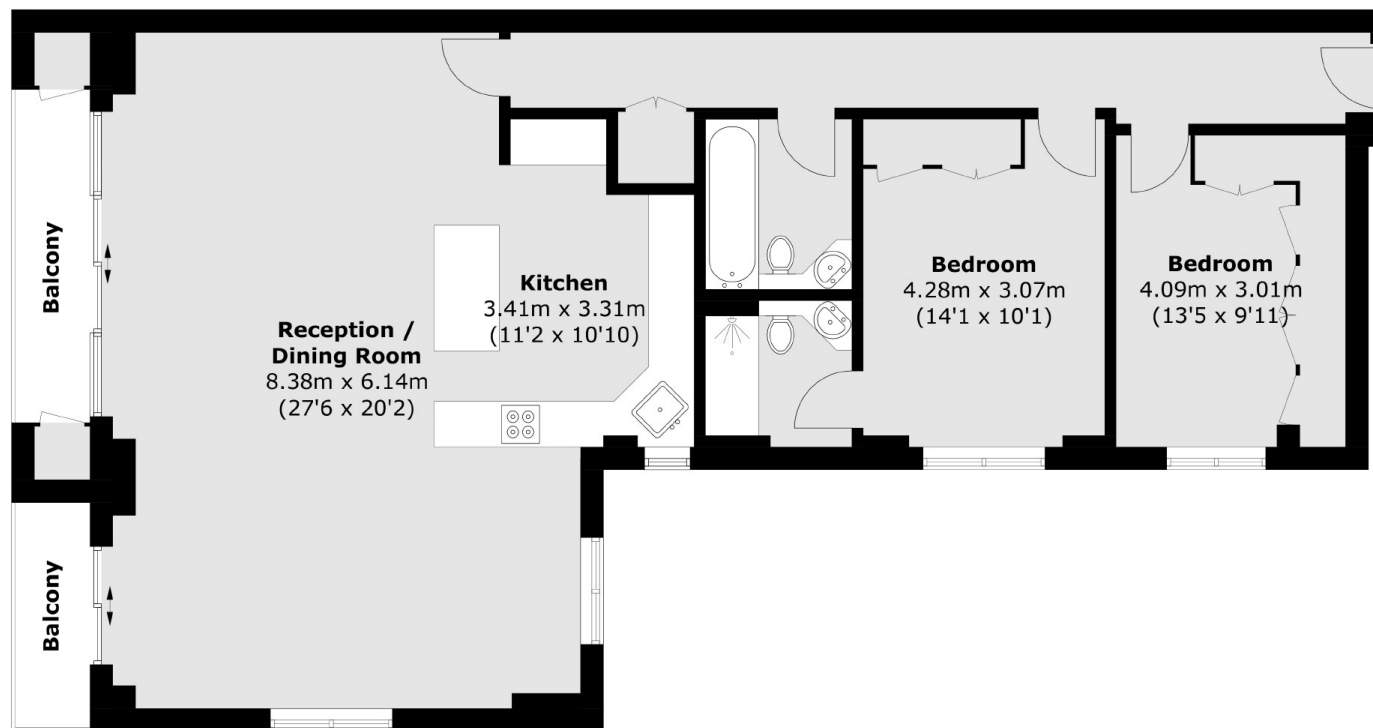
Accommodation is made up of entrance hall leading to a large, open plan double reception room with dining area, reception and a stylish kitchen with breakfast bar. There are sliding doors to two private balconies overlooking The Thames. The principal double bedroom has a range of built-in wardrobes and en-suite. There is a further double bedroom, also with built-in wardrobes currently used as a large dressing room and a family bathroom
Set within a lift serviced exclusive riverside development, there is an excellent concierge service and two secure underground parking spaces.

Features

Beautiful Apartment
Lateral Living Space
River Balconies
Secure Parking
Excellent
1,173 sq ft



William Morris Way, Fulham, SW6



Total area (approx.): 110.4 sq. m (1,188.3 sq. ft)
(Excluding External Cupboards)
Balcony: 7.2 sq. m (77.5 sq. ft)

Contact

To arrange a viewing call our office on the number below or visit our website.



Energy Rating: C. We aim to make our particulars both accurate and reliable. However they are not guaranteed; nor do they form part of an offer or contract. If you require clarification on any points then please contact us, especially if you're traveling some distance to view. Please note that appliances and heating systems have not been tested and therefore no warranties can be given as to their good working order.



MILLAR HOUSE
745-755