



Chelsea Crescent, SW10  
£1,350,000

Waterview  


A beautiful, three bedroom, third floor apartment with full width private balcony offering stunning views of The Thames and London beyond set in this exclusive riverside development.

Chelsea Harbour is an iconic riverside development located off Lot's Rd, with easy access to the famous Kings Road.







Accommodation is made up of an entrance hall, W.C., and a spacious double reception room with space for dining and sliding doors to the balcony. The Principal Suite has access to the balcony, a range of built-in wardrobes and an en-suite with bath and shower.

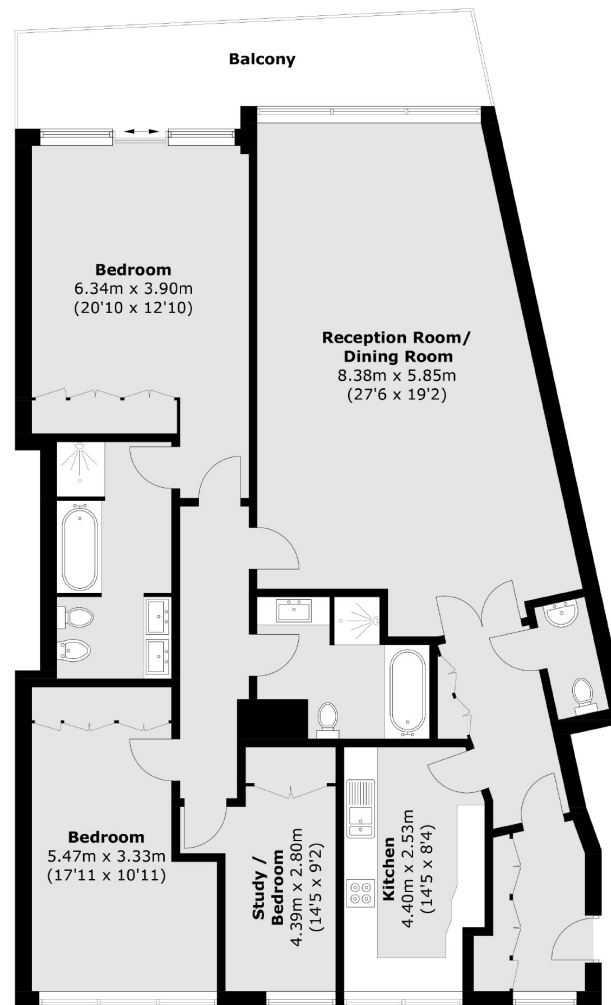
There is a further double bedroom, single bedroom/study and a family bathroom. Chelsea Crescent has an excellent concierge service, located in a newly refurbished resident's lounge and secure underground parking.

### Features

- Beautiful Apartment
- Three Bedrooms
- Private Balcony
- Excellent Concierge
- Secure Parking
- Resident's Lounge



# Chelsea Crescent, Chelsea Crescent, SW10



Total area (approx.): 143.4 sq. m (1,543.5 sq. ft)  
Balcony: 14.2 sq. m (152.8 sq. ft)

## Contact

To arrange a viewing call our office on the number below or visit our website.



Energy Rating: B. We aim to make our particulars both accurate and reliable. However they are not guaranteed; nor do they form part of an offer or contract. If you require clarification on any points then please contact us, especially if you're traveling some distance to view. Please note that appliances and heating systems have not been tested and therefore no warranties can be given as to their good working order.



