



Juniper Drive, SW18  
£1,800,000

Waterview  


A stunning front river facing three double bedroom apartment with a large private roof terrace overlooking the River Thames and two additional balconies, set in the exclusive riverside development Battersea Reach.

Battersea Reach is located on the River Thames by Wandsworth Bridge, a short walk from Clapham Junction Station and excellent selection of bars, cafes and shops close by.





This stunning apartment is located on the 7th floor of this lift serviced development with concierge, two secure underground parking spaces and far reaching river views.

The reception room spans 27ft with sliding doors to the private roof terrace with uninterrupted river views.

The large principal suite has built in wardrobes, en-suite and access to the second balcony overlooking the river.

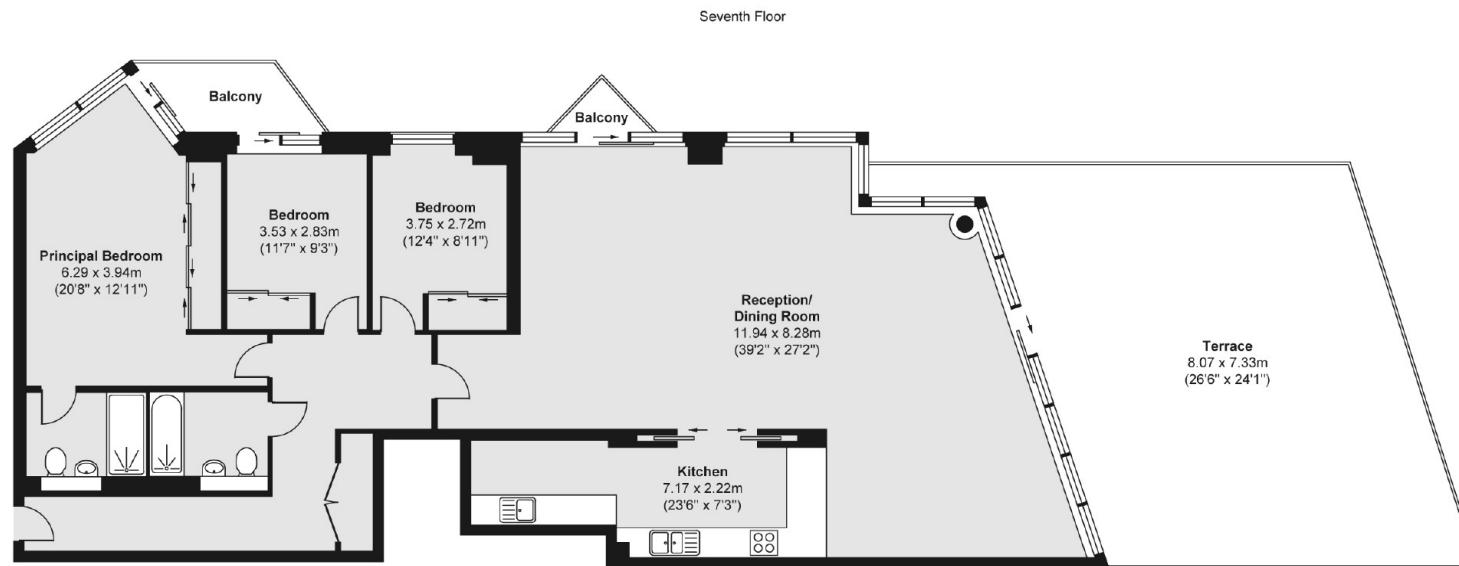
There are two further double bedrooms with a family bathroom and a third balcony.

## Features

- Stunning Apartment
- Far Reaching River Views
- Three Double Bedrooms
- Two Bathrooms
- Two Underground Parking Spaces
- Concierge Service



# Juniper Drive, Battersea, SW18



Total area (approx.) 157.69 sq. m (1,697 sq. ft)  
Balcony area (approx.) 5.11 sq. m (55 sq. ft)  
Terrace area (approx.) 61.82 sq. m (665 sq. ft)

## Contact

To arrange a viewing call our office on the number below or visit our website.



Energy Rating: B. We aim to make our particulars both accurate and reliable. However they are not guaranteed; nor do they form part of an offer or contract. If you require clarification on any points then please contact us, especially if you're traveling some distance to view. Please note that appliances and heating systems have not been tested and therefore no warranties can be given as to their good working order.

