



Carlyle Court, SW10
£830,000

Waterview


A beautiful, light filled apartment with exquisite interiors set in the prestigious Chelsea Harbour development.

Chelsea Harbour is an iconic riverside development located off Lots Road.





Accommodation is made up of entrance hall, a bright double reception room with dining space and doors to private balcony overlooking a pretty landscaped courtyard garden. There is a stylish bespoke kitchen with newly fitted quartz worktops.

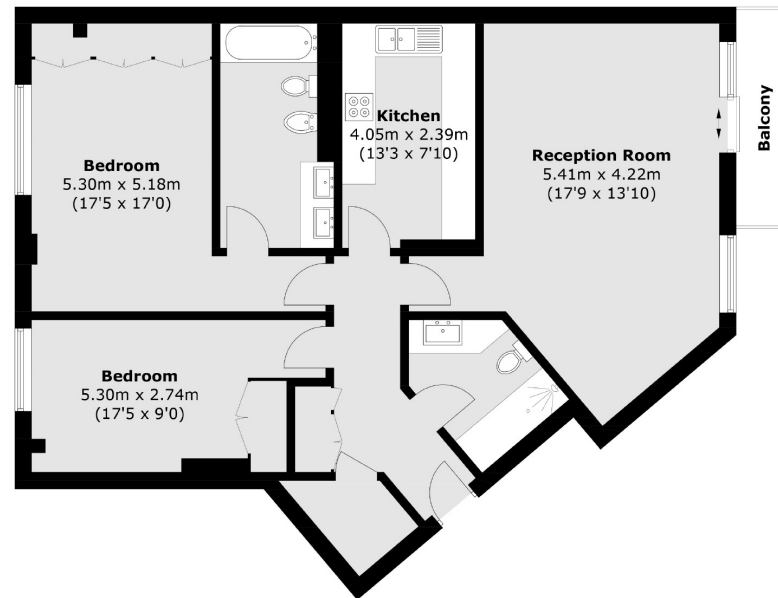
The spacious principal bedroom has full width built-in wardrobes and a luxury en-suite. There is a second double bedroom, also with built-in wardrobes and a family bathroom. There is an excellent concierge service and well kept communal areas within the harbour and riverside.

Features

Stunning Apartment
Two Double Bedrooms
Two Bathrooms
Private Balcony
Exquisite Interiors
Secure Parking.



Carlyle Court, Chelsea Harbour, SW10



Total area (approx.): 98.9 sq. m (1064.6 sq. ft)
Total area (approx.): 4.1 sq. m (44.1 sq. ft)

Contact

To arrange a viewing call our office on the number below or visit our website.



Energy Rating: B. We aim to make our particulars both accurate and reliable. However they are not guaranteed; nor do they form part of an offer or contract. If you require clarification on any points then please contact us, especially if you're traveling some distance to view. Please note that appliances and heating systems have not been tested and therefore no warranties can be given as to their good working order.

