



## Carlyle Court, SW10

£3,250,000

A spectacular four bedroom penthouse in Chelsea Harbour. This unique apartment has been remodelled to the highest of standards throughout and boasts a mechanical glass roof which can be opened to enjoy al fresco dining and entertaining.

Carlyle Court is an exclusive development in Chelsea Harbour located next to the River Thames. Imperial Wharf railway station and river boats to the city are moments away.

### Features

- Penthouse Apartment
- Interior Designed
- Long Leasehold (179+years)
- Underground Parking
- Four Bedrooms
- Porter





## Carlyle Court, SW10

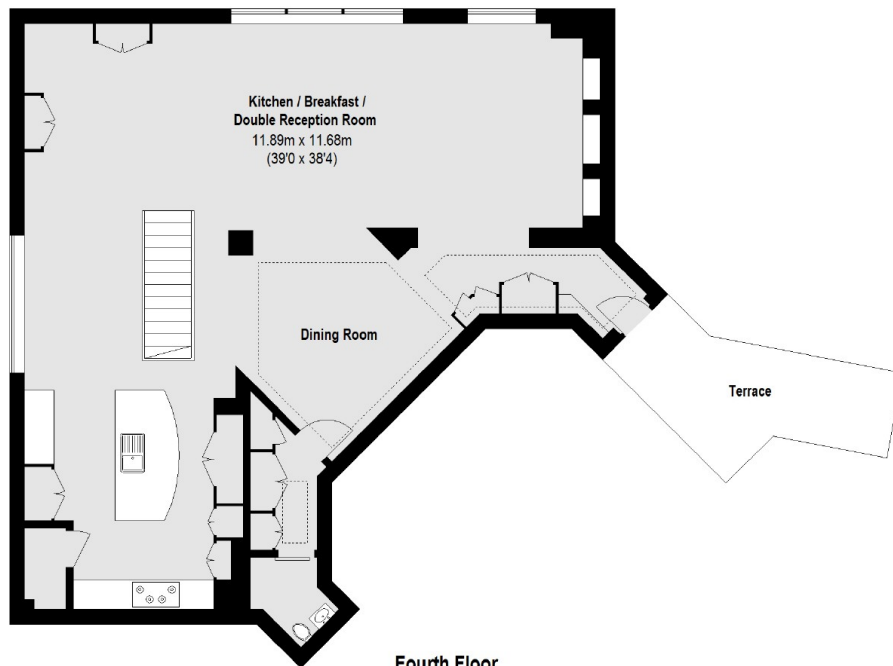
When entering the property you are welcomed by a smart hallway which links perfectly to all the bedrooms and bathrooms the apartment has to offer, as well as a separate utilities room. Up the stairs to the top floor is a 37ft reception room which is flooded with light and a bespoke kitchen ideal for family living.

The entire property has been meticulously designed to create one of the most unique apartments in Chelsea and would work wonderfully for a family home or London base.

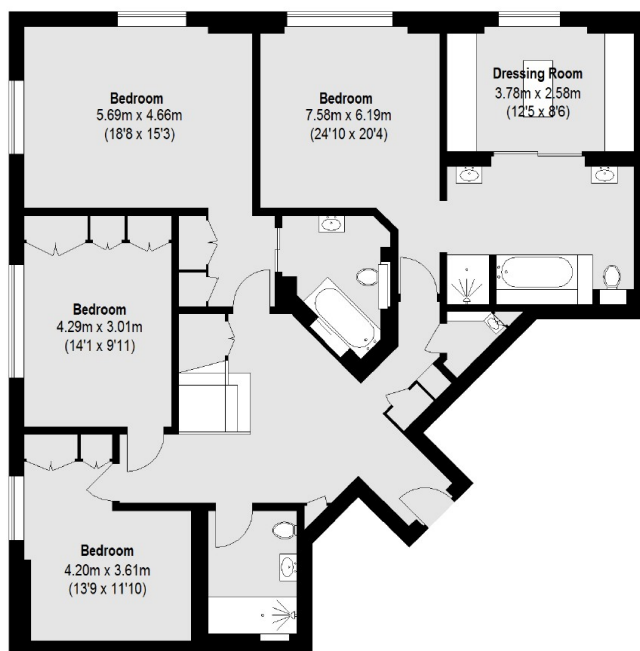




# Carlyle Court, London, SW10



Fourth Floor



Third Floor

Total area (approx.): 233.39 sq. m (2512 sq. ft)  
Terrace: 11.6 sq. m ( 125 sq. ft)