



## Imperial Crescent, SW6

£1,500,000

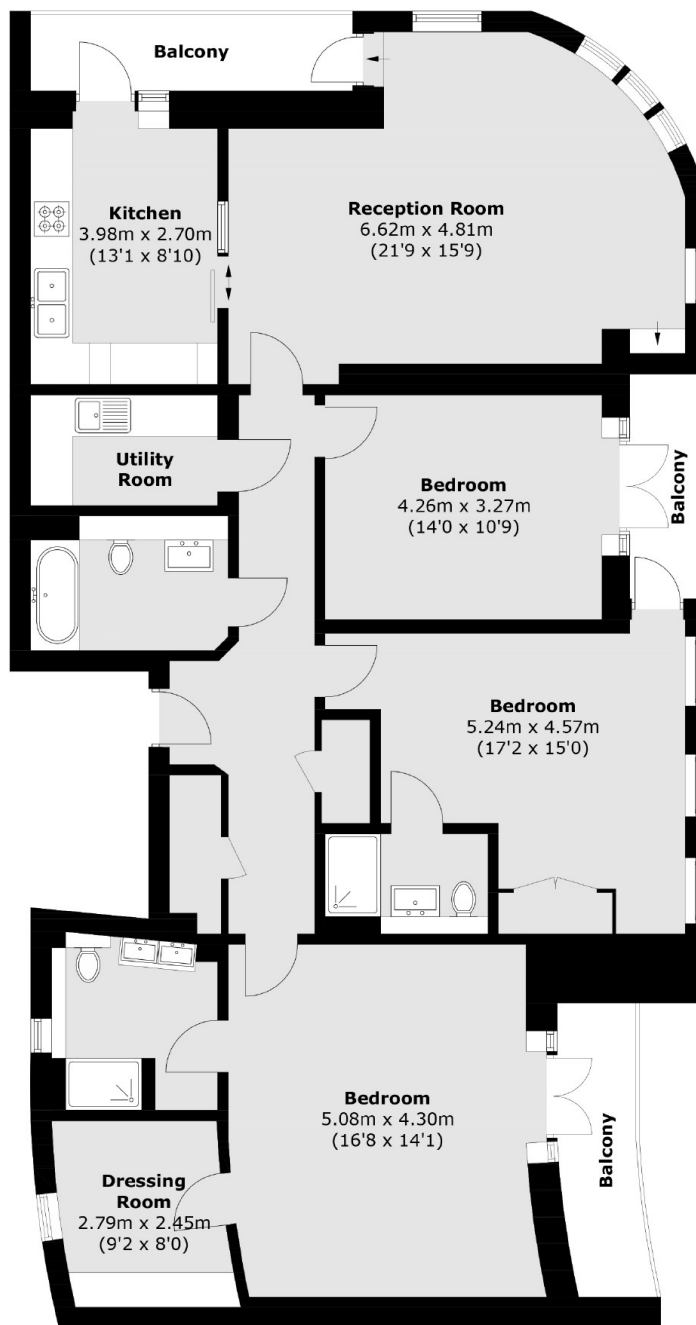
A spacious, three double bedroom lateral apartment in the most exclusive building within the Imperial Wharf development. The property has an open plan kitchen living room, three bathrooms and multiple terraces.

Located within close proximity to the amenities and transport links of Imperial Wharf and the Kings Road.

### Features

- Underground Parking Space
- Three Double Bedrooms
- Lateral Apartment
- Well Finished Throughout
- Gated Community
- River Views

# Imperial Crescent, London, SW6



Total area (approx.): 139.9 sq. m (1,505.9 sq. ft)  
Balcony area (approx.): 13.4 sq. m (144.2 sq. ft)