



Townmead Road, SW6

£1,075,000

Waterview


A beautifully presented two double bedroom apartment offering a spacious living area with two private balconies, two bathrooms and private parking.

Imperial Wharf is located on the River Thames between Chelsea and Fulham.





Accommodation is made up of entrance hall, an impressive 28' open plan double reception room with large curved panoramic window, space for dining and stylish integrated kitchen with breakfast bar and access to balcony. The spacious principal bedroom has built in wardrobes and en-suite. The second double bedroom has access to a second private balcony and there is a further family bathroom.

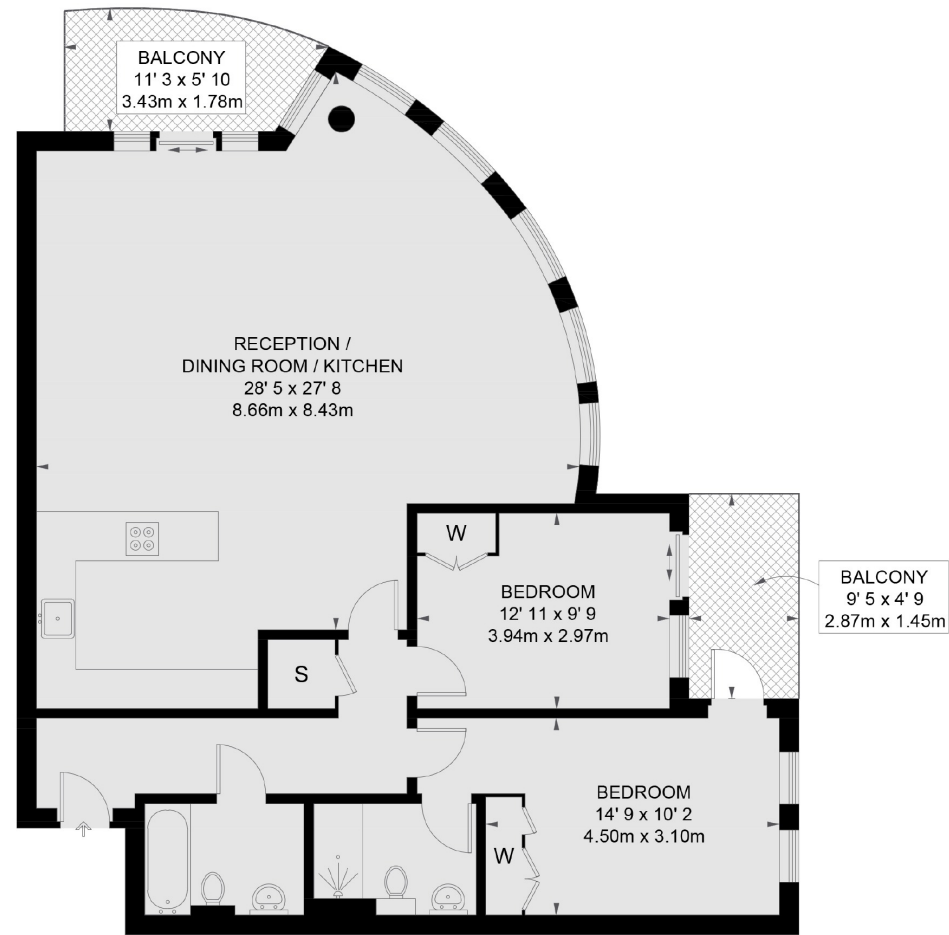
The building enjoys concierge and lift service.

Features

- Second Floor Apartment
- Beautifully Presented
- Two Double Bedrooms
- Two Luxury Bathrooms
- Private Parking
- Two Private Balconies



Townmead Road, Imperial Wharf, Fulham, SW6



SECOND FLOOR

TOTAL APPROX. FLOOR AREA 1187 SQ. FT. (110.3 SQ. M.)
TOTAL APPROX. BALCONY AREA 103 SQ. FT. (9.6 SQ. M.)

Contact

To arrange a viewing call our office on the number below or visit our website.



Energy Rating: B. We aim to make our particulars both accurate and reliable. However they are not guaranteed; nor do they form part of an offer or contract. If you require clarification on any points then please contact us, especially if you're traveling some distance to view. Please note that appliances and heating systems have not been tested and therefore no warranties can be given as to their good working order.

