



The Quadrangle, SW10
£985,000

Waterview


A stunning and light apartment with two luxurious master bedrooms and two bathrooms, two spacious walk-in wardrobes and a dedicated office space and two balconies with fabulous sitting room/kitchen/dining room with underground parking.

The Quadrangle is conveniently situated in Chelsea Harbour within a short walk of Imperial Wharf station.





Accommodation is made up of entrance hall, an impressive 25' open plan living/dining area with stylish kitchen and access to two separate balconies.

There are two generous double bedrooms, both with walk-in wardrobes and luxury en-suite bathrooms.

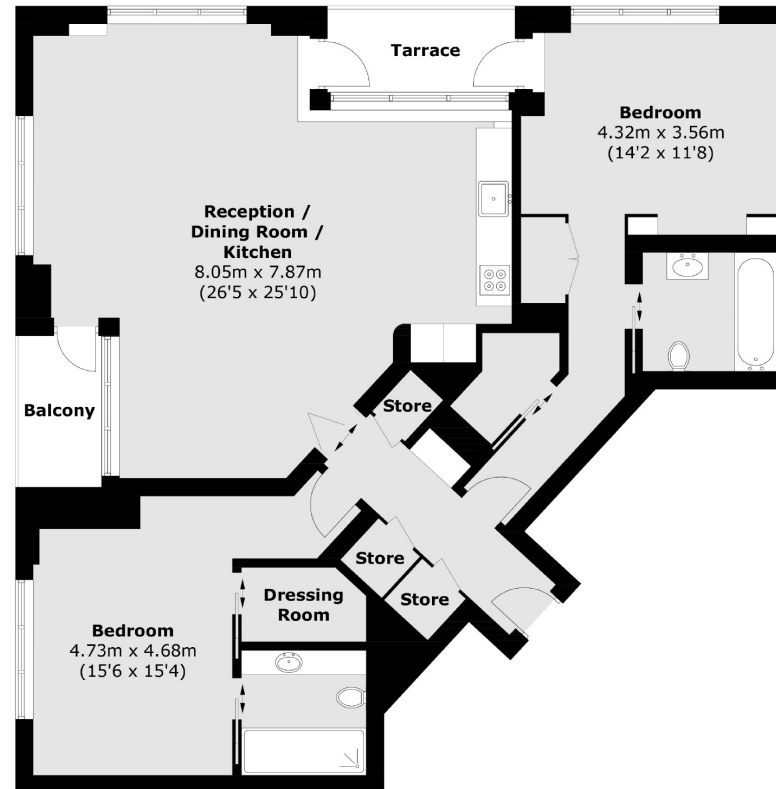
There is an excellent concierge service, secure underground parking, and access to the Harbour and riverside.

Features

- Two Double Bedrooms
- Two Bathrooms
- Open Plan Kitchen
- Private Balconies
- 5* Concierge
- Underground Parking
- Space



The Quadrangle, Chelsea Harbour, SW10



Third Floor

Total area (approx.): 114.2 sq. m (1229.2 sq. ft)
Balcony / Terrace (approx.): 8.0 sq. m (86.1 sq. ft)

Contact

To arrange a viewing call our office on the number below or visit our website.



Energy Rating: C. We aim to make our particulars both accurate and reliable. However they are not guaranteed; nor do they form part of an offer or contract. If you require clarification on any points then please contact us, especially if you're traveling some distance to view. Please note that appliances and heating systems have not been tested and therefore no warranties can be given as to their good working order.

