



Clove Hitch Quay, SW11

£2,250,000

Waterview


A stunning 39 metre converted barge that has been comprehensively refurbished to the highest standard. Incorporating beautiful interiors, the houseboat comes with the added benefit of 117 year mooring agreement.

Plantation Wharf Pier is located on the Southbank towpath at Plantation Wharf close to the shops, bars and restaurants of Battersea.





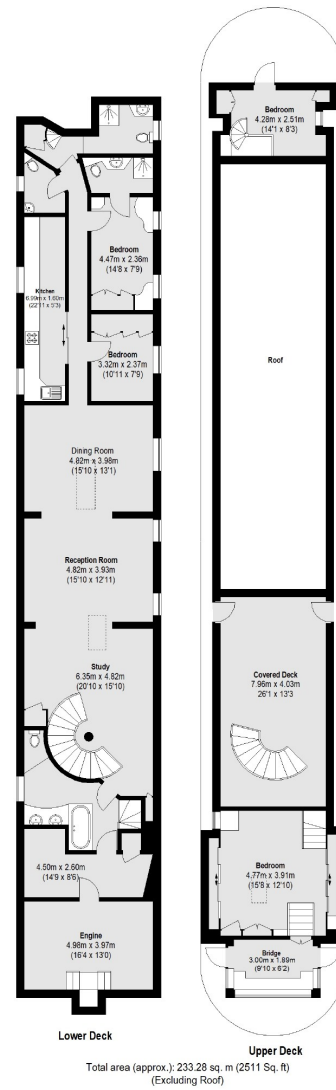
Accommodation is made up of a large open plan living area made up of study, living room and dining room. There are four bedrooms, three with en-suite and further W.C. There is a well appointed kitchen and utility area. The engines are well maintained and fully operational for cruising. There is a covered top deck jacuzzi. The houseboat is located on secure moorings shared with the Thames Clipper.

Features

- Converted Barge
- Beautifully Presented
- Four Bedrooms
- Fully Operational
- 117 year lease
- Parking Available



Clove Hitch Quay, Battersea, SW11



Contact

To arrange a viewing call our office on the number below or visit our website.



Energy Rating: We aim to make our particulars both accurate and reliable. However they are not guaranteed; nor do they form part of an offer or contract. If you require clarification on any points then please contact us, especially if you're traveling some distance to view. Please note that appliances and heating systems have not been tested and therefore no warranties can be given as to their good working order.

