



£1,750 PCM

23 Puffin House Stone Close, Poole, Dorset, BH15 4GE

www.quayliving.co.uk



Quay Living are pleased to offer this exceptional penthouse apartment situated in the Harbour Reach development, within walking distance to Poole Quay and Town Centre and just moments away from Hamworthy Park and Beach.

The accommodation boasts a spacious open plan lounge/ kitchen with sliding doors leading onto a large south-facing roof terrace and a further balcony leading off from the dining area. Family bathroom with shower over bath. Three bedrooms with the master bedroom benefiting from an en-suite shower.

The property is offered fully furnished and equipped with two secure allocated parking spaces.

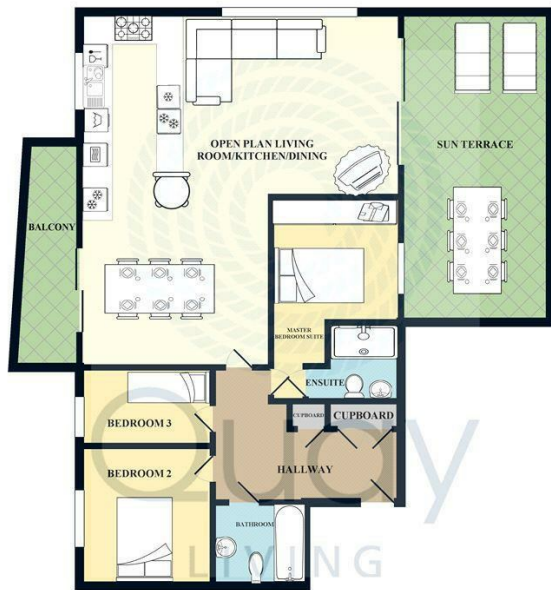
Council Tax - F
EPC - C

Available from 28th of November!!

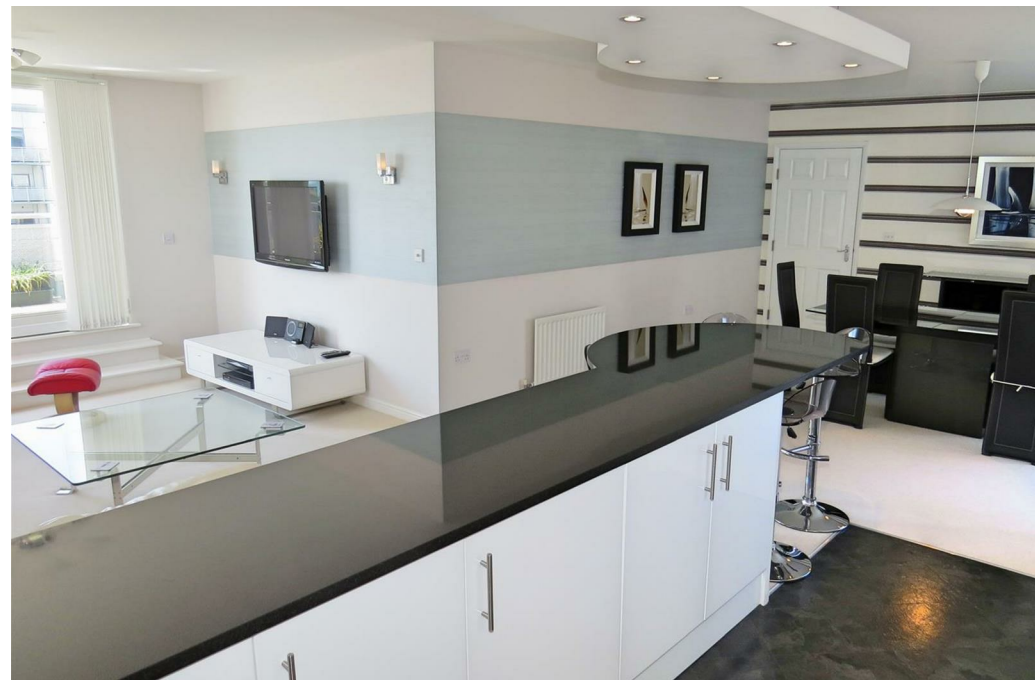
Call or email Quay Living for your appointment to view!!







Measurements are approximate. Not to scale. Illustrative purposes only.
Made with Metopix ©2018



Energy Efficiency Rating		
	Current	Potential
Very energy efficient - lower running costs		
(92 plus) A		
(81-91) B		
(69-80) C		
(55-68) D		
(39-54) E		
(21-38) F		
(1-20) G		
Not energy efficient - higher running costs		
England & Wales		EU Directive 2002/91/EC



Agent Note: Whilst every care has been taken to prepare these sales particulars, they are for guidance purposes only. All representations including descriptions, dimensions and photos are given, in good faith and are believed to be correct, but any intending purchaser should not rely on them as statements or representations of fact but must satisfy themselves as to their correctness. Appliances and central heating systems have not been checked by Quay Living or their employees and we recommend that purchasers instruct a qualified person to check all appliances / service before legal commitment.



01202 683444
Orchard Plaza, 41 High Street
Poole, Dorset, BH15 1EG
www.quayliving.co.uk

