



£1,100

Flat 9, 17, Waterside Views Blandford Road, Poole, BH15 4AS

www.quayliving.co.uk



Quay Living are pleased to offer this well presented two double bedroom top floor apartment constructed in 2012 and ideally situated a few 100 yards away from Poole Quay with its array of bars and eateries.

Hamworthy beach and park with stunning views over the harbour are also a short stroll away.

The property benefits from open plan lounge/ kitchen, modern bathroom and allocated off road parking. Further features include UPVC double glazing and modern décor.

Available from the 8th of October.

Call or email Quay Living Estate Agents for your appointment to view!

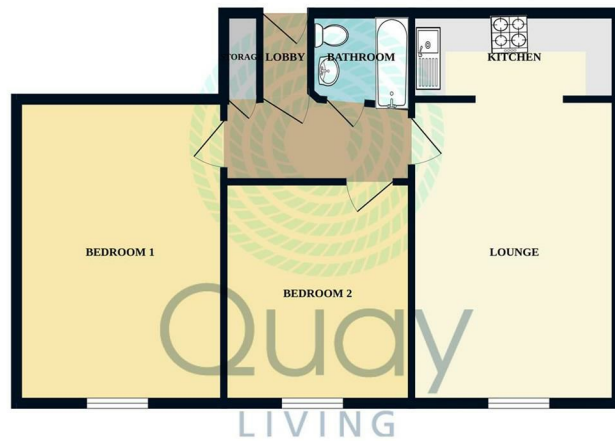
Council Tax - C

EPC - C





GROUND FLOOR
628 sq.ft. (58.4 sq.m.) approx.



TOTAL FLOOR AREA - 628 sq.ft. (58.4 sq.m.) approx.
Measurements are approximate. Not to scale. Illustrative purposes only.
Made with Mettler 12/2024



Energy Efficiency Rating			
	Current	Potential	
Very energy efficient - lower running costs			
(92 plus) A			
(81-91) B			
(69-80) C			
(55-68) D			
(39-54) E			
(21-38) F			
(1-20) G			
Not energy efficient - higher running costs			
England & Wales	80	80	
		EU Directive 2002/91/EC	



Agent Note: Whilst every care has been taken to prepare these sales particulars, they are for guidance purposes only. All representations including descriptions, dimensions and photos are given, in good faith and are believed to be correct, but any intending purchaser should not rely on them as statements or representations of fact but must satisfy themselves as to their correctness. Appliances and central heating systems have not been checked by Quay Living or their employees and we recommend that purchasers instruct a qualified person to check all appliances / service before legal commitment.



01202 683444
Orchard Plaza, 41 High Street
Poole, Dorset, BH15 1EG
www.quayliving.co.uk

