



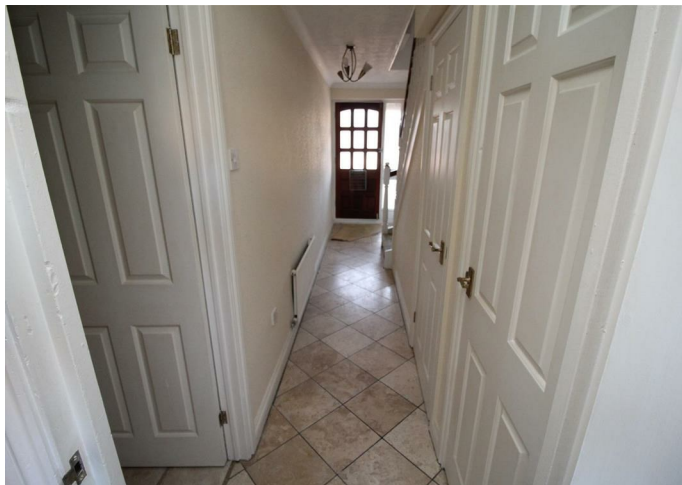
House

# 63 LANDER CLOSE, POOLE, BH15 1UL

## £1,800

### FEATURES

- Townhouse
- Moments From Poole Harbour
- Large Driveway
- Rear Courtyard Garden
- Four Bedrooms
- Modern Kitchen
- Large Integral Garage
- New Carpets, Bathrooms & Kitchen



# 4 Bedroom House located in Poole

Quay Living are delighted to offer this four-bed townhouse in the highly popular Baiter Park development, a moment's stroll to Harbourside Park and Poole Harbour.

To the ground floor is a large integral garage, ample hallway storage, WC and utility kitchen space with access out to the courtyard garden.

Stairs to first floor with open plan living room and dining area with a separate new fitted kitchen and single bedroom/ office space. To the second floor is the master bedroom which boasts a modern ensuite shower room, third & fourth bedrooms and family bathroom offering a large modern shower, sink and toilet.

Front driveway offering off-road parking for several cars.

Offered on an unfurnished basis and is available NOW!!

Call us on

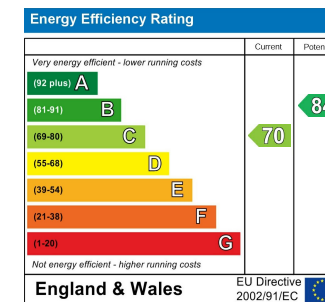
**01202 683 444**

[info@quayliving.co.uk](mailto:info@quayliving.co.uk)

<https://www.quayliving.co.uk/>

**Council Tax Band**

**E**



Agents Note: Whilst every care has been taken to prepare these particulars, they are for guidance purposes only. All measurements are approximate and are for general guidance purposes only and whilst every care has been taken to ensure their accuracy, they should not be relied upon and potential buyers are advised to recheck the measurements.

