



Apartment

35 DOLPHIN QUAYS THE QUAY, POOLE, DORSET, BH15 1HH

PCM

£1,275

FEATURES

- Poole Quay
- 24 Hours front desk
- Fully Furnished
- Lift Access
- Two Double Bedrooms
- Miele Fitted Kitchen
- Allocated Parking
- EPC C



 2  2  1  C



2 Bedroom Apartment located in Poole

A third floor fully furnished and equipped apartment available in the prestigious Dolphin Quays development, situated directly on Poole Quay with a 24-hour front desk, lift access and secure gated parking for one vehicle.

The apartment offers an open plan lounge and dining area with a contemporary Miele fitted kitchen providing fridge/ freezer, washer/ dryer, oven, hob and extractor. Family bathroom and two double bedrooms with the master bedroom benefiting from fitted wardrobes and an en-suite with shower. Offered Fully Furnished & Equipped.

Available for a 12 month let, with an any time mutual break clause after the first 6 months, with the condition of sales views to be carried out by request . Photos taken prior to the current let.

Council Tax Band F

Call us on

01202 683 444

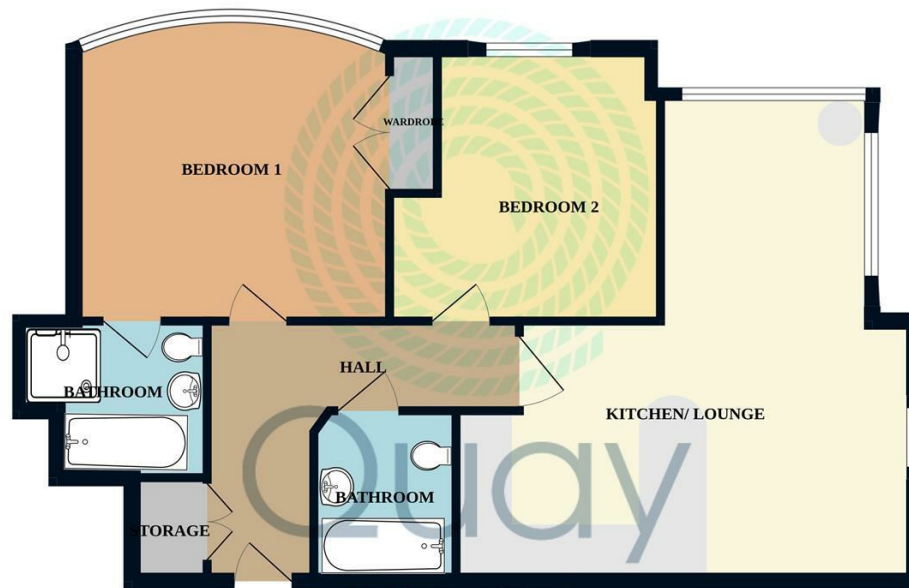
info@quayliving.co.uk

<https://www.quayliving.co.uk/>

Council Tax Band

F

GROUND FLOOR approx.



TOTAL FLOOR AREA : 826 sq.ft. (76.7 sq.m.) approx.
Measurements are approximate. Not to scale. Illustrative purposes only
Made with Metropix ©2023

Energy Efficiency Rating		Current	Potential
<i>Very energy efficient - lower running costs</i>			
(92 plus) A			
(81-91) B			
(69-80) C		71	79
(55-68) D			
(39-54) E			
(21-38) F			
(1-20) G			
<i>Not energy efficient - higher running costs</i>			
England & Wales		EU Directive 2002/91/EC	

Agents Note: Whilst every care has been taken to prepare these particulars, they are for guidance purposes only. All measurements are approximate and are for general guidance purposes only and whilst every care has been taken to ensure their accuracy, they should not be relied upon and potential buyers are advised to recheck the measurements.

