



Flat - Penthouse

95 AQUA, LIFEBOAT QUAY, POOLE, DORSET, BH15 1LS

PCM

£1,950

FEATURES

- Penthouse Apartment
- South-West Facing Sun Terrace
- Spacious Throughout
- Lift Access
- Close to Poole Quay
- Waterfront Views
- Two Allocated Parking Spaces
- EPC D

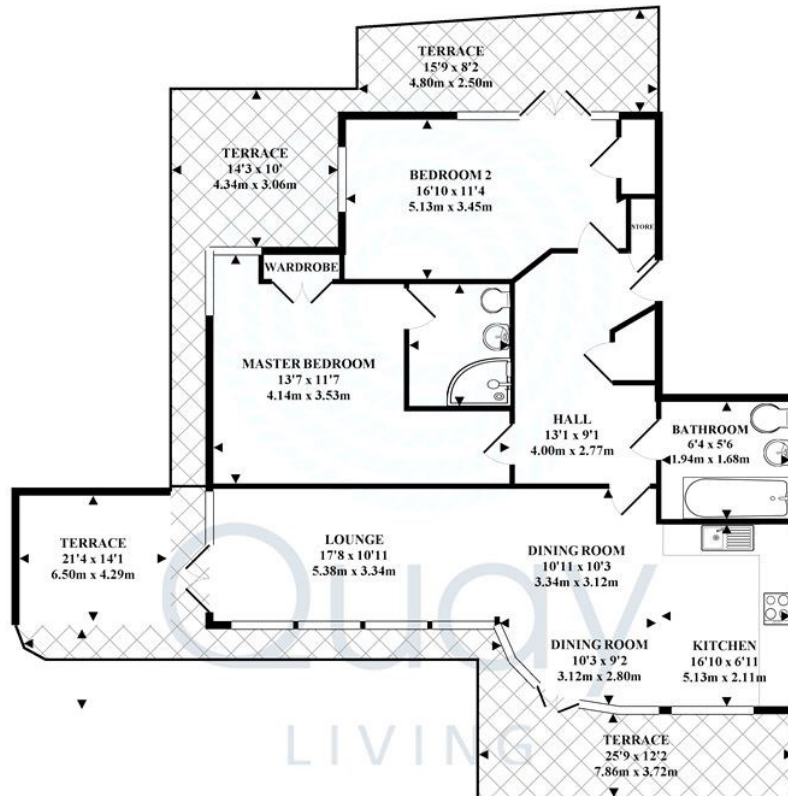


2 Bedroom Flat - Penthouse located in Poole

****IMPRESSIVE PENTHOUSE APARTMENT**** QUAY LIVING are delighted to offer this RARE OPPORTUNITY to rent this stunning penthouse apartment with some truly spectacular views!

This unique property comprises two generous sized double bedrooms both offering fitted wardrobes. Family bathroom with shower over bath and an en-suite shower room leading to the master bedroom. A spacious and open plan lounge/ diner with feature skylight, floor to ceiling windows and fitted kitchen including all modern integrated appliances. Large wrap around sun terrace overlooking Hole's Bay & Cobb's Quay Marina with far reaching views of the Purbeck hills. Further benefits include two uncover parking spaces in a secure gated car park, lift access, intercom system, two hallway store cupboards and double glazing throughout.

The property is offered on an unfurnished basis and is available from the 27th of September.



TOTAL APPROX. FLOOR AREA 13186 SQ.FT. (1225.0 SQ.M.)
Measurements are approximate. Not to scale. Illustrative purposes only.
Made with Metropix ©2017

Call us on

01202 683 444

info@quayliving.co.uk

<https://www.quayliving.co.uk/>

Council Tax Band

F

Energy Efficiency Rating		Current	Potential
<i>Very energy efficient - lower running costs</i>			
(92 plus)	A		
(81-91)	B		
(69-80)	C		
(55-68)	D	67	77
(39-54)	E		
(21-38)	F		
(1-20)	G		
<i>Not energy efficient - higher running costs</i>			
England & Wales		EU Directive 2002/91/EC	

Agents Note: Whilst every care has been taken to prepare these particulars, they are for guidance purposes only. All measurements are approximate and are for general guidance purposes only and whilst every care has been taken to ensure their accuracy, they should not be relied upon and potential buyers are advised to recheck the measurements.

