



Flat

FLAT 2, 2 DURRELL WAY, POOLE, BH15 1YN

PCM

£1,275

FEATURES

- Ground Floor Apartment
- Close to Poole Town & Quay
- Fully Furnished
- Two Double Bedrooms
- Private Patio
- Set to be Painted Throughout with New Carpets



2 Bedroom Flat located in Poole

Call us on

01202 683 444

info@quayliving.co.uk

<https://www.quayliving.co.uk/>

Council Tax Band

C

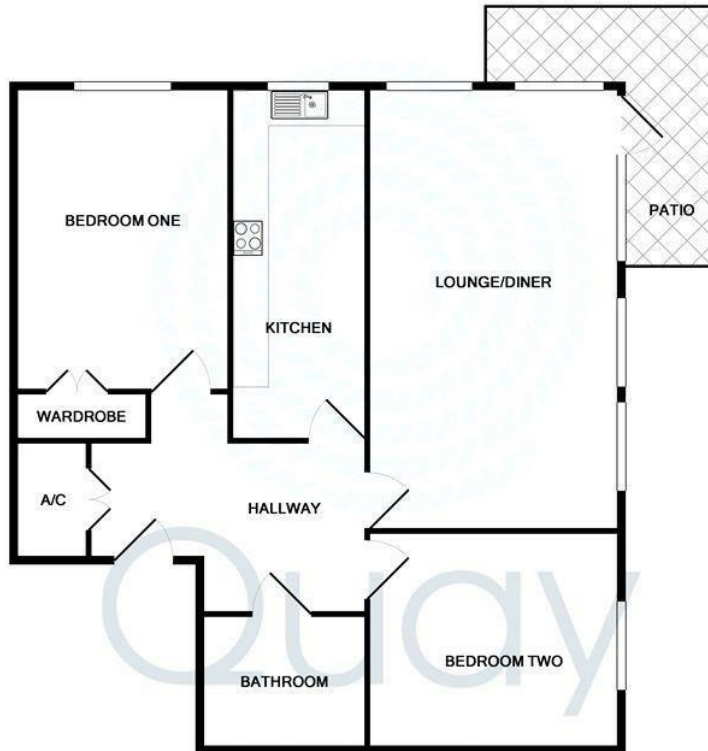
Quay Living are delighted to offer this ground floor apartment with PRIVATE PATIO in the sought-after Poole Quarter development, situated just a stone's throw from Poole Quay, Poole Town Centre and Baiter Park.

The property comprises of entrance hallway with storage cupboard, a bright and airy lounge with door leading to private patio, separate kitchen with white goods, two double bedrooms and family bathroom with shower over bath and dual shower head.

****Set to be freshly painted throughout with new carpets to bedrooms****

Available from the 3rd August on a fully furnished basis with an allocated parking space.

Call or email Quay Living Estate Agents for your appointment to view!



Whilst every attempt has been made to ensure the accuracy of the floor plan contained here, measurements of doors, windows, rooms and any other items are approximate and no responsibility is taken for any error, omission, or mis-statement. This plan is for illustrative purposes only and should be used as such by any prospective purchaser. The services, systems and appliances shown have not been tested and no guarantee as to their operability or efficiency can be given.
Made with Metropix ©2015

Energy Efficiency Rating		Current	Potential
<i>Very energy efficient - lower running costs</i>			
(92 plus) A			
(81-91) B		80	81
(69-80) C			
(55-68) D			
(39-54) E			
(21-38) F			
(1-20) G			
<i>Not energy efficient - higher running costs</i>			
England & Wales		EU Directive 2002/91/EC	

Agents Note: Whilst every care has been taken to prepare these particulars, they are for guidance purposes only. All measurements are approximate and are for general guidance purposes only and whilst every care has been taken to ensure their accuracy, they should not be relied upon and potential buyers are advised to recheck the measurements.

