

Redmayne Arnold & Harris
estate agents, letting agents & surveyors

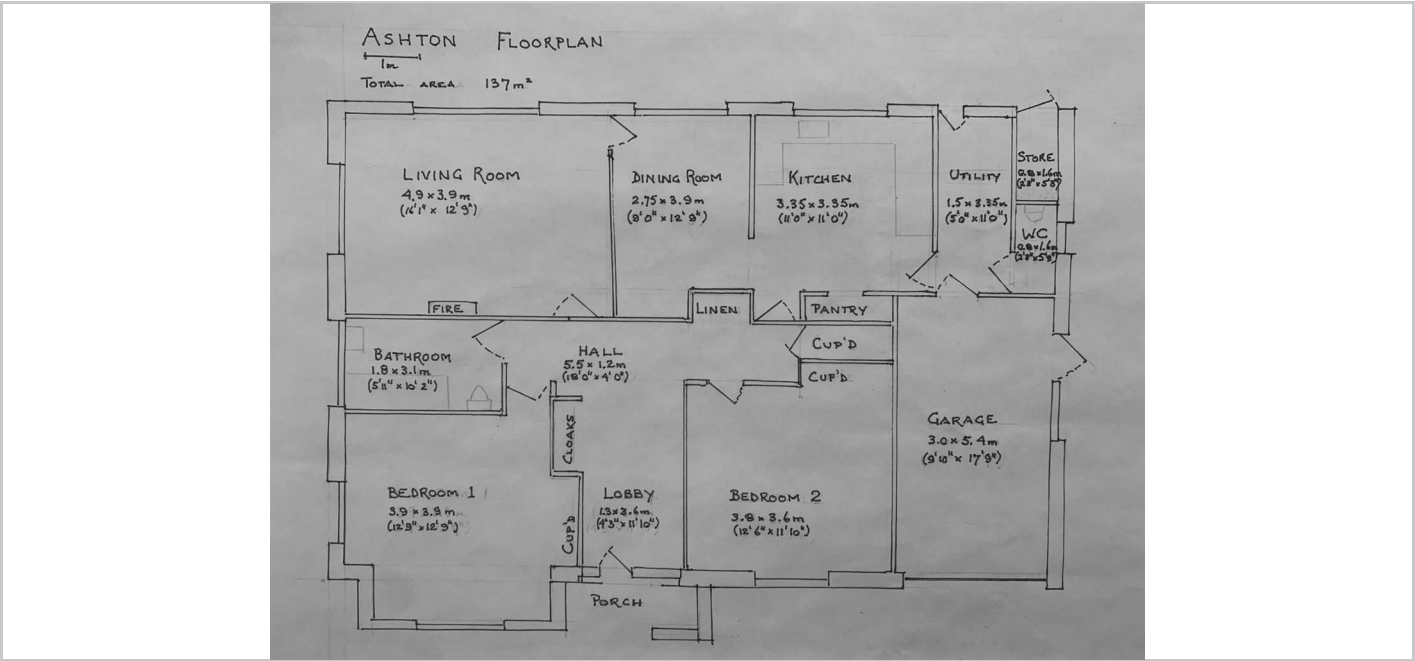
rah.co.uk



Ashton Kings Mill Lane, Great Shelford, Cambridge, Cambridgeshire, CB22 5EN

£1,750 PCM

- Standing in private grounds in a unique and beautiful setting
- Excellent cupboard space throughout
- Spacious rooms
- Off-road parking



Directions

THE PROPERTY

An architect-designed two-bedroom detached bungalow in old Shelford, yet with views over open meadows down to the River Cam. Ashton is located in Kings Mill Lane, a quiet village lane, terminating at the Mill Pond yet close to the Parish church and school, within easy walking distance of village shops and services, and excellent access to a main line station, Addenbrooke’s Hospital and Cambridge city centre.

The property comprises a fully fitted kitchen with cooker, fridge-freezer and dishwasher; utility room with washing machine and second toilet; sitting room with patio doors offering beautiful views over the garden and meadows; separate dining room; two double bedrooms with built-in wardrobes; and a family bathroom (bath with shower over, basin & w.c.).

Ashton stands in its own grounds, surrounded by lawns and gardens, with ample driveway parking and built-in garage.

The property is unfurnished and managed by RAH.

Council Tax Band: F
EPC Band: D
Minimum 12 month Tenancy
Deposit £2010
Holding Deposit: £390

SITUATION

