

Redmayne Arnold & Harris
estate agents, letting agents & surveyors

rah.co.uk

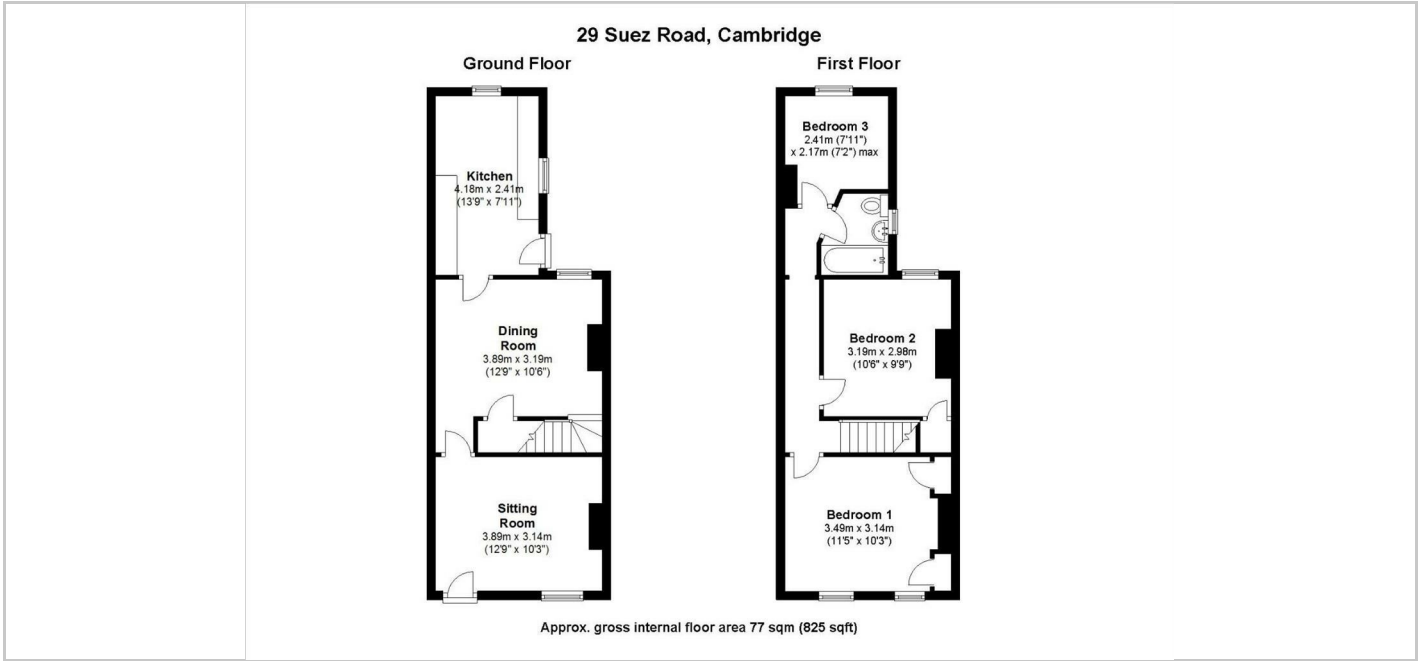


TO LET



29 Suez Road, Cambridge, CB1 3QB

£1,650 PCM



Directions

THE PROPERTY

A well presented end terrace house located off Mill Road providing easy access to city centre, railway station and Addenbrookes Hospital. The property comprises Sitting room, dining room, kitchen, two double bedrooms, one single bedroom, bathroom. Enclosed rear garden and on street parking. This property is owned by a member of the RAH team and will be managed by RAH.

EPC Rating: E
Council tax band : C
Minimum 6 Month Tenancy
Deposit: £1900
Holding Deposit: £380

SITUATION

