

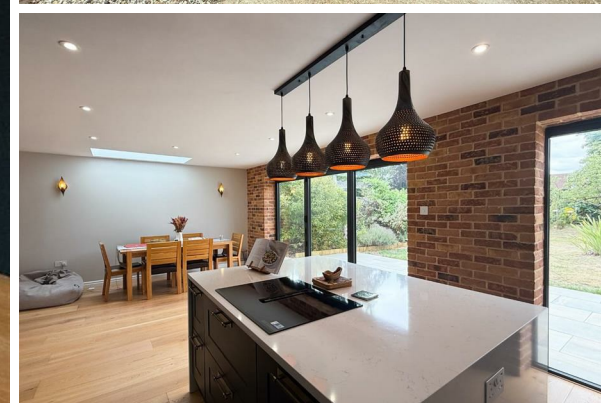


Redmayne Arnold & Harris
estate agents, letting agents & surveyors

rah.co.uk

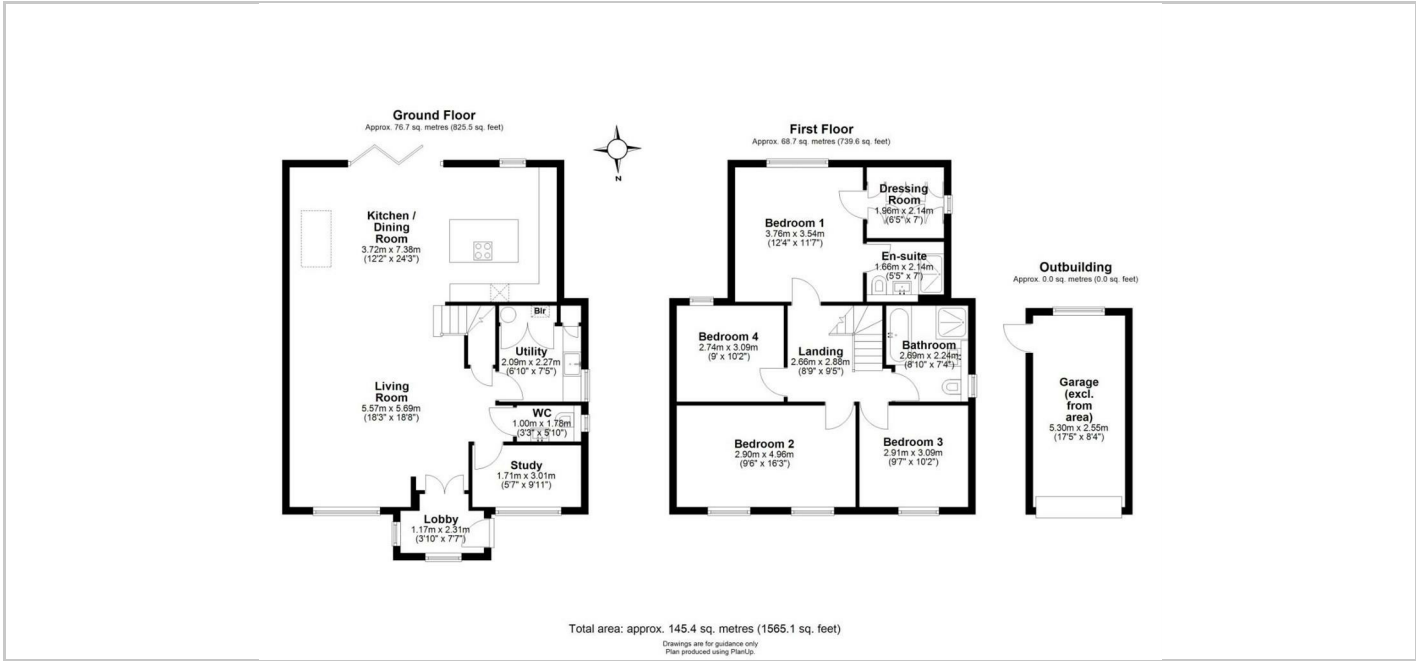


TO LET



25 Priams Way, Stapleford, Cambridge, CB22 5DT

£2,650



Directions

THE PROPERTY

Located in the charming village of Stapleford, Cambridge, this newly refurbished detached house offers stylish and comfortable living, ideal for families. The property features four spacious bedrooms, making it a perfect choice for those seeking a modern and practical home.

The ground floor includes a welcoming reception room and a stunning open-plan kitchen, dining and living area, designed for both everyday living and entertaining. A separate utility room and downstairs WC add extra convenience.

Upstairs, there are four well-proportioned bedrooms. The principal bedroom benefits from its own en suite, while the family bathroom, complete with underfloor heating, provides an added touch of comfort.

Outside, the home is situated in a desirable village setting, offering the tranquility of Stapleford while remaining within easy reach of Cambridge city centre and its excellent amenities. This outstanding property on Priams Way is available to rent and presents a rare opportunity to enjoy a high-quality home in a sought-after location.

Council Band: E
EPC Rating: B
Minimum 12 Month Tenancy
Deposit: £3100
Holding Deposit: £390

SITUATION

