

Redmayne Arnold & Harris
estate agents, letting agents & surveyors

rah.co.uk

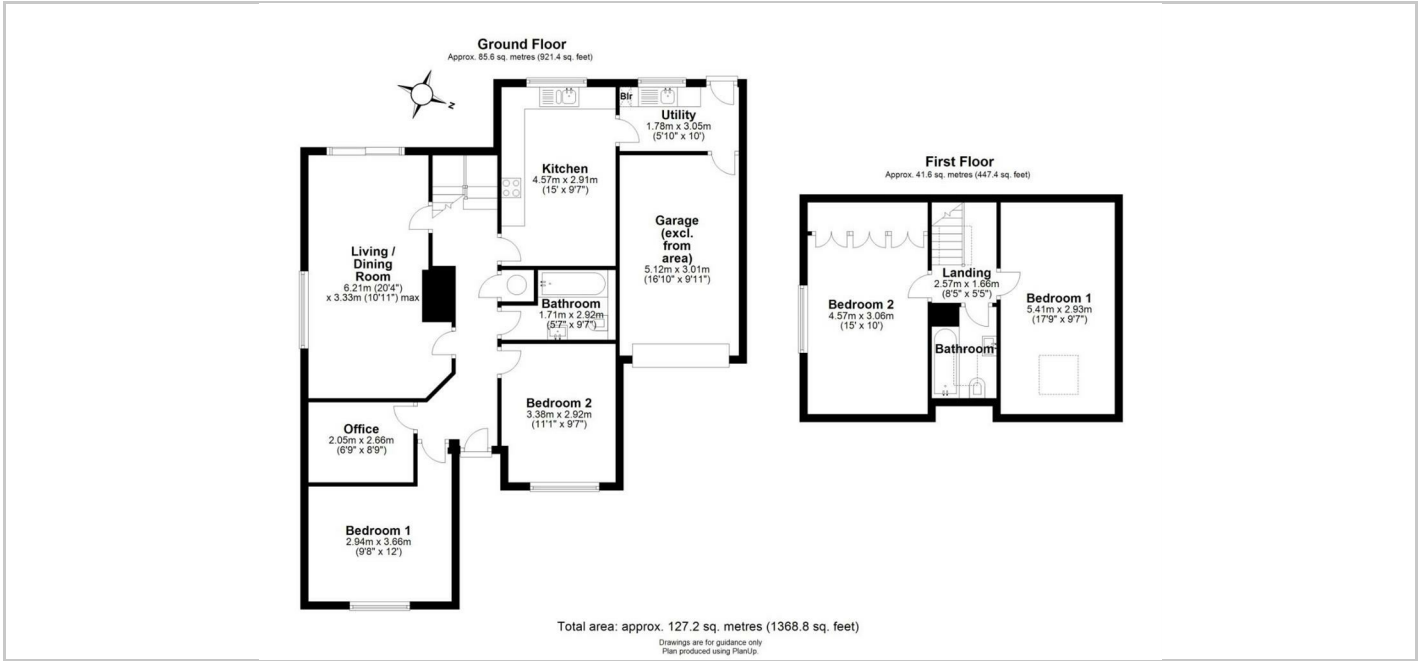


TO LET



46 Ickleton Road, Duxford, Cambridge, Cambridgeshire, CB22 4RT

£2,000 PCM



Directions

THE PROPERTY

A well presented detached four bedroom house located in the village of Duxford, with good access to the M11 and Cambridge City Centre. The property comprises of an entrance hall, study, kitchen/dining room, separate utility room, living room, 2 double bedrooms and a family bathroom downstairs. There are a further two bedrooms upstairs with a second bathroom. The property also benefits from easy handrail access, a private driveway, garage and an enclosed garden to the rear. The property is managed by RAH.

- EPC Rating D
- Council Tax Band E
- Deposit £2530
- Holding Deposit £390
- Minimum Tenancy Length 12 months

SITUATION

