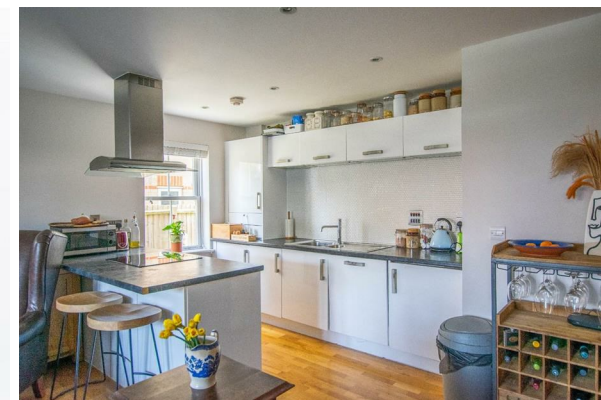




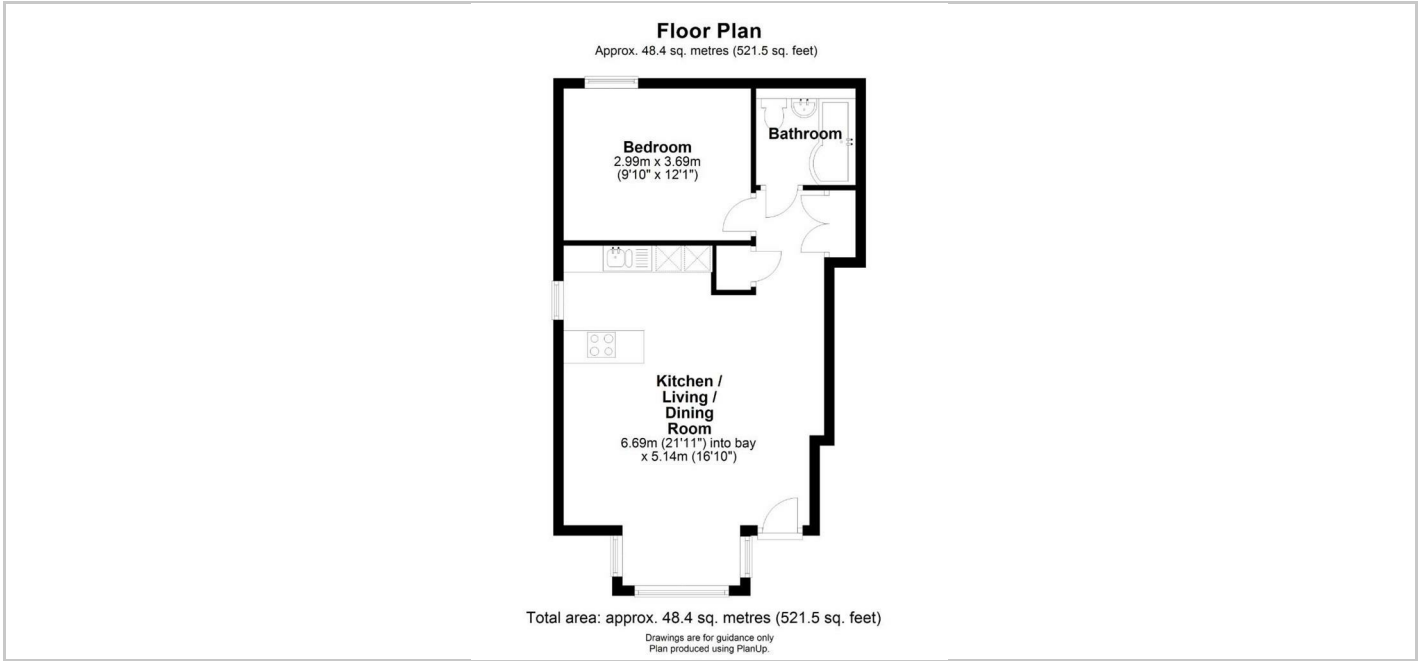
Redmayne Arnold & Harris  
estate agents, letting agents & surveyors

[rah.co.uk](http://rah.co.uk)



1 Westfield Place Cambridge Road, Great Shelford, Cambridge, Cambridgeshire, CB22 5JJ

£1,375 PCM



Directions

THE PROPERTY

A well presented one bedroom ground floor flat in the popular village of Great Shelford offering excellent access to City Centre, Addenbrookes Hospital, mainline station, local amenities and M11.

The property comprises of an entrance hall, open plan kitchen / living area with washing machine, integrated fridge freezer, integrated dishwasher and integrated oven and hob. The double bedroom is located at the rear of the property and adjacent to that is the bathroom which comprising of a bath with shower over, w.c & basin. The property is managed by RAH.

- EPC Rating: C
- Council Tax band: C
- Minimum 12 Month Tenancy
- Deposit: £1580
- Holding Deposit: £310

SITUATION

