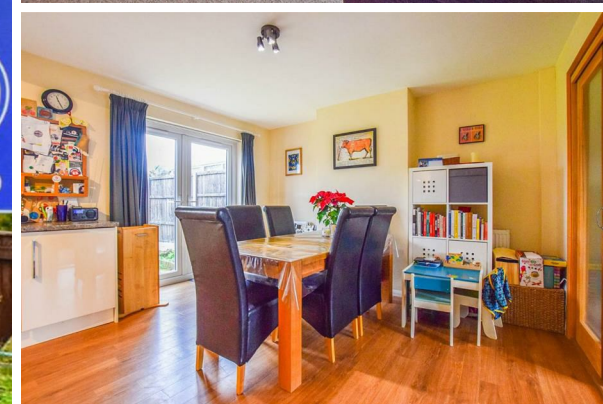




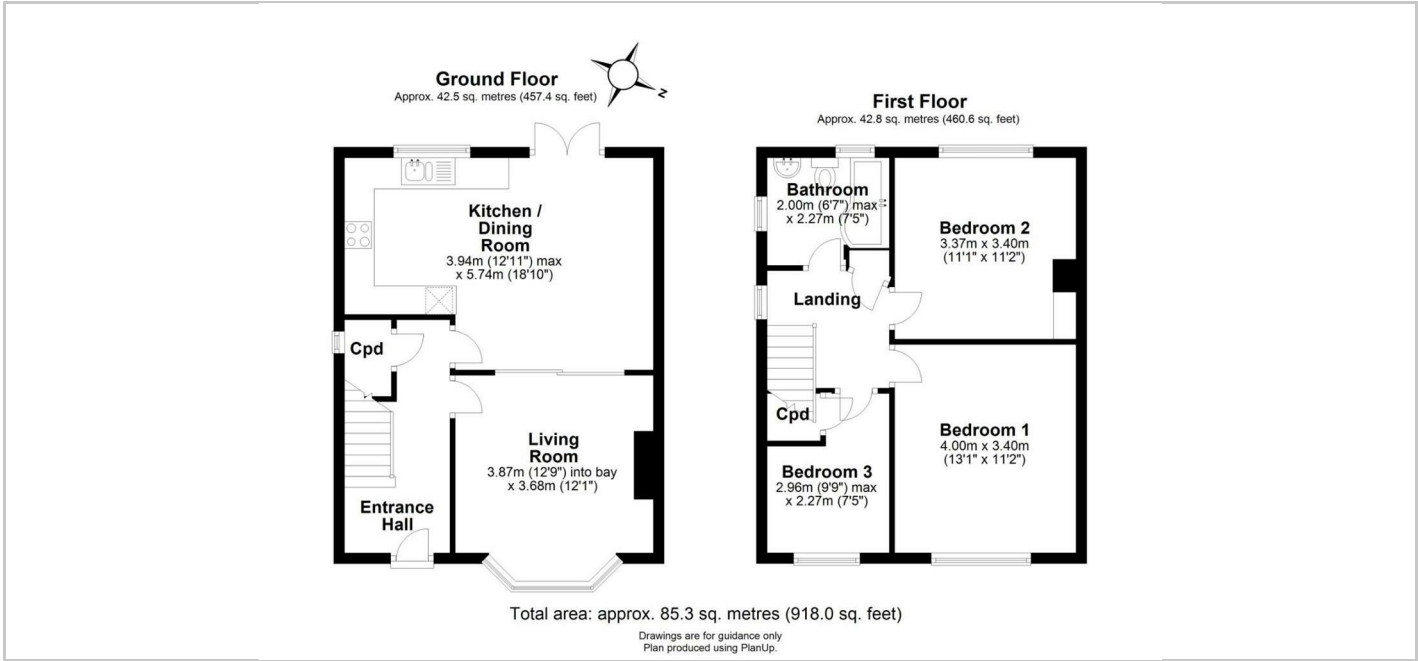
Redmayne Arnold & Harris  
estate agents, letting agents & surveyors

rah.co.uk



31 Priams Way, Stapleford, Cambridge, CB22 5DT

£1,600 PCM



Directions

THE PROPERTY

A well-presented three bedroom family home, located in this popular village just outside of Cambridge, offering excellent access to M11. The property offers entrance hall, living room, kitchen/diner, two double bedrooms, a single and a family bathroom. To the rear of the property is a large garden with access to a garage, and off-road parking is available to the front. This property will be managed by RAH.

- EPC Rating C
- Council tax band D
- Minimum 12 month tenancy.
- Deposit £1960
- Holding Deposit: £390

SITUATION

