



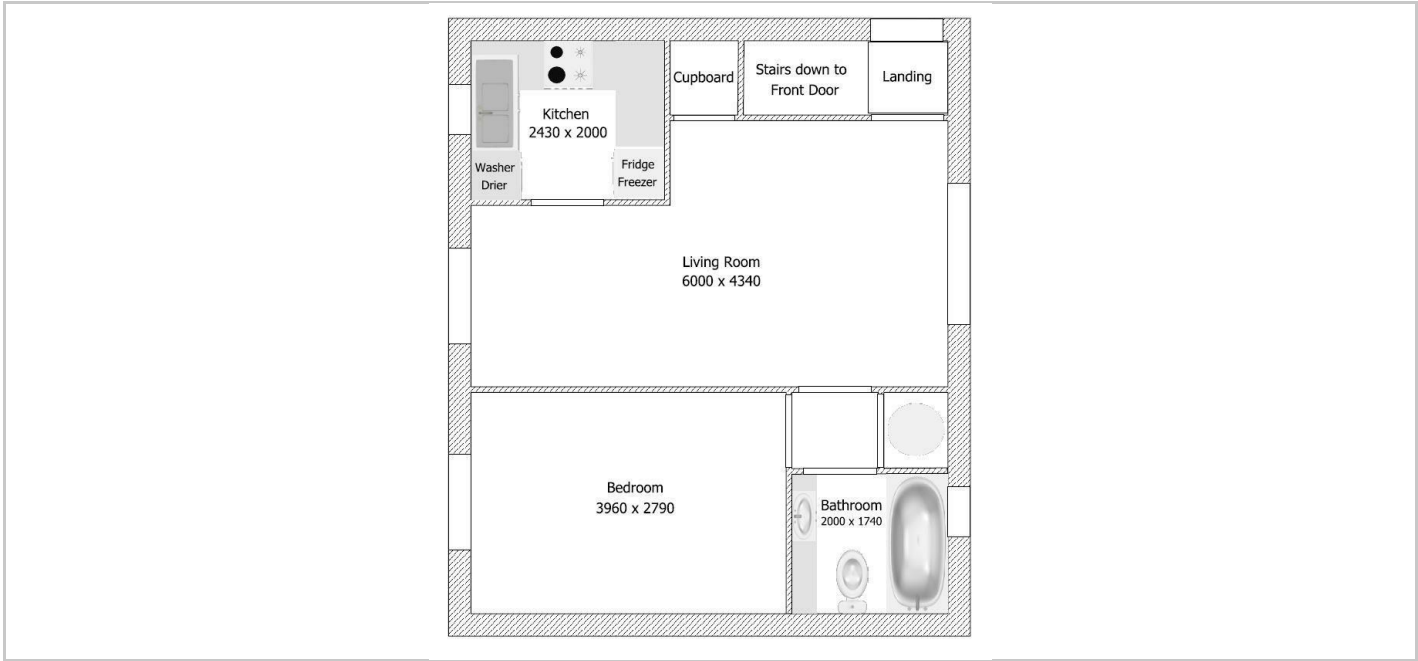
Redmayne Arnold & Harris
estate agents, letting agents & surveyors

rah.co.uk



220 Columbine Road, Ely, Cambridge, CB6 3WP

£800 PCM



Directions

THE PROPERTY

A one bedroom first floor flat located in the town of Ely, with good access to the A10. The property comprises private stairway, open plan living/dining room, kitchen, storage cupboard, double bedroom and one bathroom. This property will be managed by RAH.

- EPC band: C
- Council Tax Band: A
- Minimum 6 Month Tenancy
- Deposit: £920
- Holding Deposit: £180

SITUATION

