



Redmayne Arnold & Harris
estate agents, letting agents & surveyors

rah.co.uk

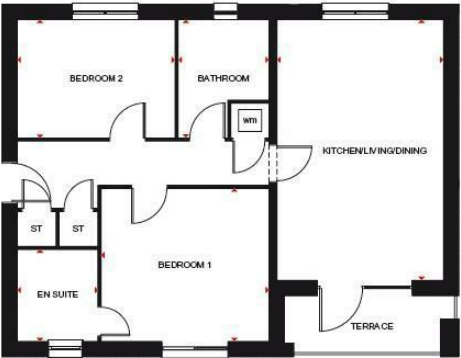


TO LET



310 Osprey Drive, Trumpington, Cambridge, CB2 9GS

£1,650 Per Month



Kitchen/ Living/Dining	6230 x 3973mm	20'5" x 13'0"
Bedroom 1	3498 x 4007mm	11'6" x 13'2"
En Suite	2200 x 1925mm	7'3" x 6'4"
Bedroom 2	2999 x 3765mm	9'10" x 12'4"
Bathroom	2999 x 2167mm	9'10" x 7'1"

[Approximate dimensions]

Directions

THE PROPERTY

A well presented two bedroom first floor apartment excellently located with access local amenities, Addenbrookes Hospital, Trumpington Park and Ride, mainline Train Station, Cambridge City Centre, A10 and M11.

The property comprises of a communal entrance hall leading to the first floor, private entrance hall inside the flat, kitchen / living room, master bedroom with ensuite shower room, second double bedroom and family bathroom with hand held shower over the bath, WC and hand basin.
There is also one allocated parking space to the rear of the block with visitor spaces, Secure bin and bike storage

Council Tax Band: C
EPC Rating: B
Minimum 12 Month Tenancy
Deposit: £1900
Holding Deposit: £390

SITUATION

