

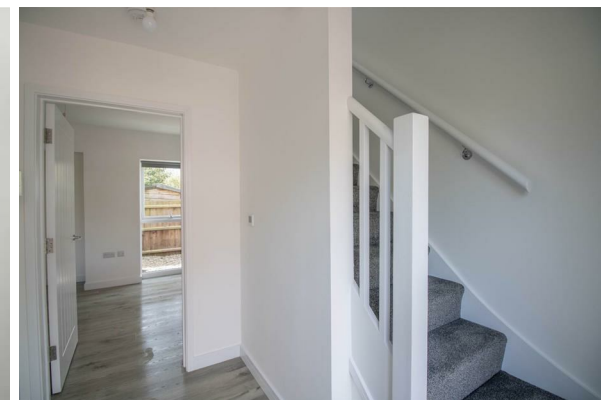


Redmayne Arnold & Harris
estate agents, letting agents & surveyors

rah.co.uk

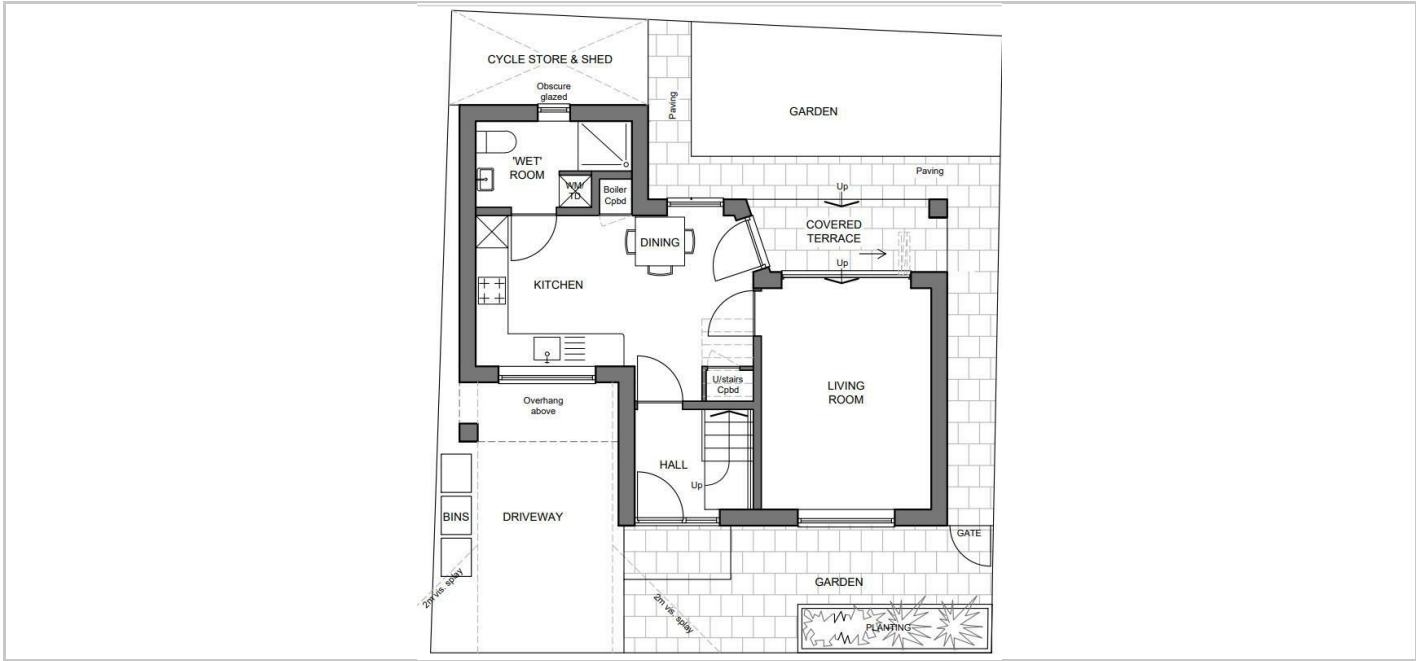


TO LET



The Little House, 1A Canterbury Close, Cambridge, CB4 3QQ

£1,900 PCM



Directions

THE PROPERTY

A newly renovated, two-bedroom detached house. Located just north of the city centre, offering excellent access via buses to Science Park, Cambridge North and ARU, and within close proximity of local amenities.

The property comprises of entrance hall, kitchen/diner, living room, family bathroom, double bedroom with an ensuite and another double bedroom. Gravelled garden to the rear of the property and driveway parking for one car.

Council Tax Band: TBC
EPC Rating: C
Minimum 12 Month Tenancy
Deposit: £2250
Holding Deposit: £390

SITUATION

