



Redmayne Arnold & Harris  
estate agents, letting agents & surveyors

[rah.co.uk](http://rah.co.uk)

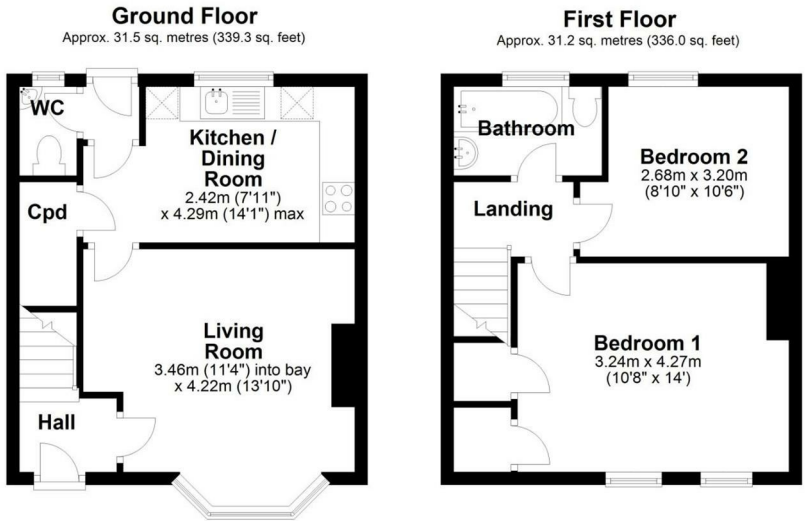


TO LET



27 Hawthorn Way, Cambridge, Cambridgeshire, CB4 1AT

£1,675 PCM



Total area: approx. 62.7 sq. metres (675.3 sq. feet)

Drawings are for guidance only  
Plan produced using PlanUp.

Directions

THE PROPERTY

A well-presented two bedroom end-terraced house, offered unfurnished. The property is located in central Cambridge, offering excellent access to the science Park, railway station, cafes and shops. To the ground floor is an entrance hall, living room, kitchen and W/C. To the first floor are two double bedrooms and family bathroom.

There is an enclosed garden to the rear with shed, and off-road parking to the front. The property is managed by the Landlord directly.

- Council Tax Band: C
- EPC Rating: D
- Minimum tenancy length 12 months.
- Deposit £1990
- Holding Deposit: £390

SITUATION

