



Redmayne Arnold & Harris  
estate agents, letting agents & surveyors

rah.co.uk



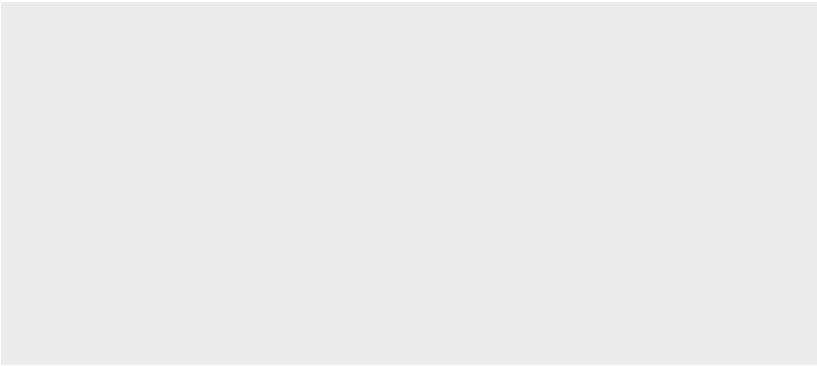
TO LET



Ashton Kings Mill Lane, Great Shelford, Cambridge, Cambridgeshire, CB22 5EN

£1,750 PCM





**THE PROPERTY**

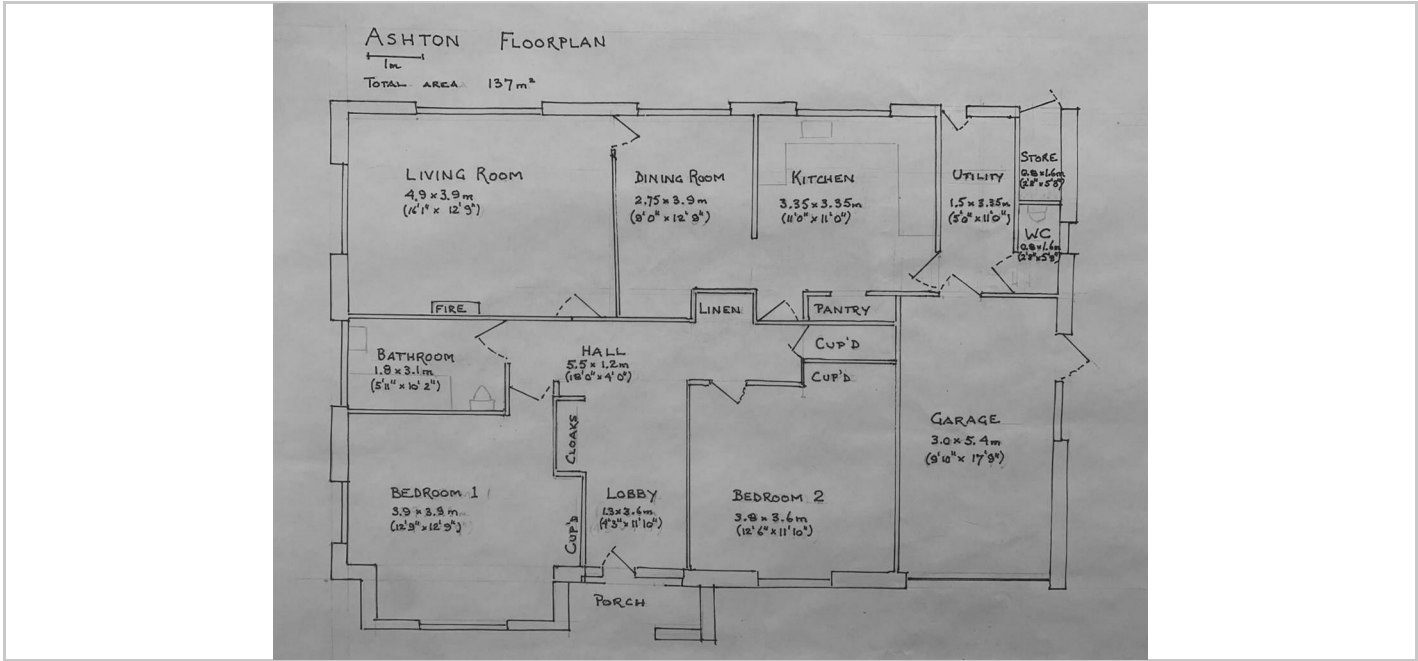
A two bedroom detached bungalow in highly sought after location in the heart of Great Shelford village, offering excellent access to Addenbrookes Hospital, City Centre, mainline station and local amenities.

The property comprises of fully fitted kitchen with cooker, fridge freezer, dishwasher and washing machine, a sitting room with patio doors and views over the garden, a separate dining room, two double bedrooms with built in wardrobes and a family bathroom benefiting from a bath with shower over, w.c & basin. To the front is ample parking on the driveway as well as access to the garage and to the rear is a good sized mature garden.

Children and small pets can be considered after discussing with the landlord.

The property is unfurnished and managed by RAH.

- Council Tax Band F.
- EPC Band D.
- Minimum 12 month Tenancy
- Deposit £2010
- Holding Deposit: £390



**Directions**

**SITUATION**

