



Redmayne Arnold & Harris  
estate agents, letting agents & surveyors

rah.co.uk



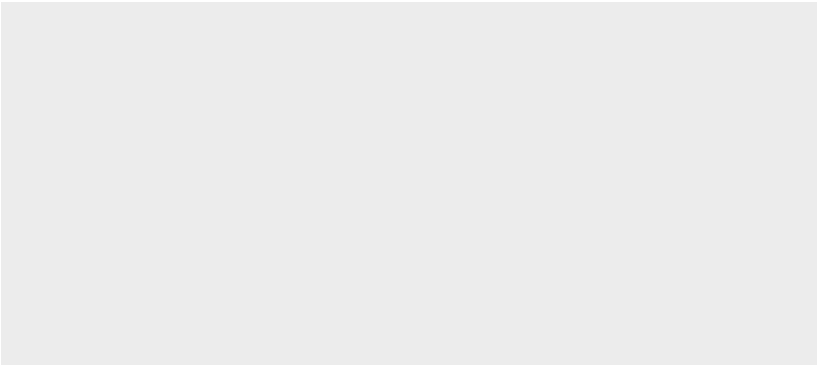
TO LET



8 Westfield Road, Great Shelford, Cambridge, Cambridgeshire, CB22 5JW

£2,100 PCM





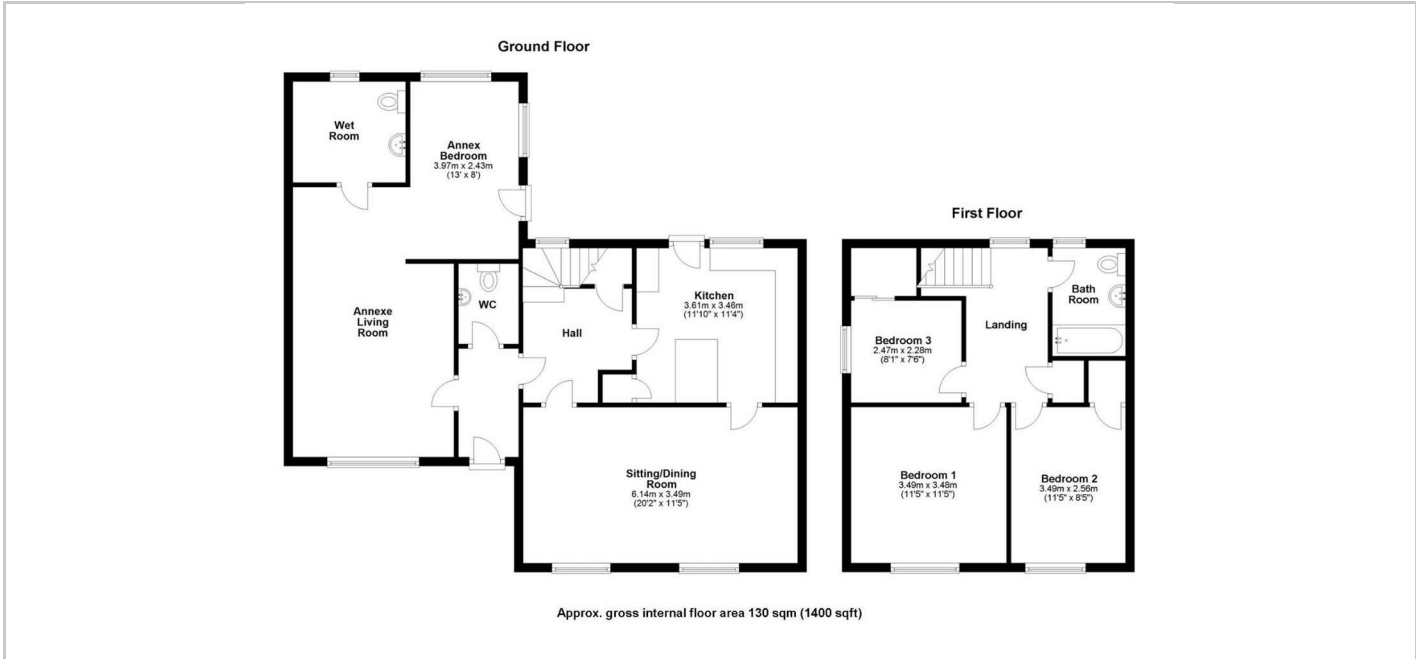
### THE PROPERTY

This well-presented four bedroom semi-detached property in a popular village location offers excellent access to Addenbrookes Hospital, the City Centre, M11 & A14.

To the ground floor there is a modern kitchen featuring a peninsular breakfast bar. White goods include cooker, fridge/freezer, washing machine and dishwasher. The kitchen has a door to the garden and leads through to the good-sized lounge. There is a further ground floor room with an en-suite wet room, which could be used as a second reception room or as a bedroom. The property also benefits from a downstairs W/C. Upstairs are two double bedrooms, one with a built-in wardrobe, a family bathroom and a good-sized single bedroom.

Externally, the property boasts off-street parking for two cars and a well-kept garden to the rear which is mainly laid to lawn with a large patio, raised beds and outbuildings for storage.

- EPC rating C.
- Council tax band D.
- Deposit £2400.
- Minimum tenancy length 12 months.
- Holding Deposit: £480



### Directions

### SITUATION

