

SW19



Lowry Crescent Mitcham

Monthly Rental Of £1,250

- One double Bedroom
- Available now
- Off street parking
- Close to Colliers Wood tube station
- Unfurnished



SW19 Estate Agents Ltd.

Wimbledon Town 83b Hartfield Crescent London SW19 3RZ

South Wimbledon 119 Merton Road London SW19 1ED

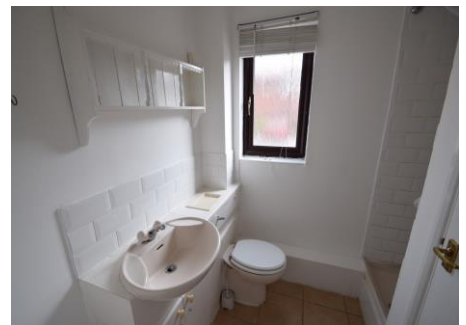
Colliers Wood 44 High Street London SW19 2AB

020 8544 2828

info@SW19.com

SW19.com

A one double bedroom purpose built apartment located within this residential cul-de-sac approximately 0.5 miles from the Colliers Wood Northern line tube. Benefits off street parking. The accommodation comprises one double bedroom, shower room, open plan lounge with separate kitchen area and an allocated parking space. Offered unfurnished.



SW19 Estate Agents Ltd.

Wimbledon Town 83b Hartfield Crescent London SW19 3RZ

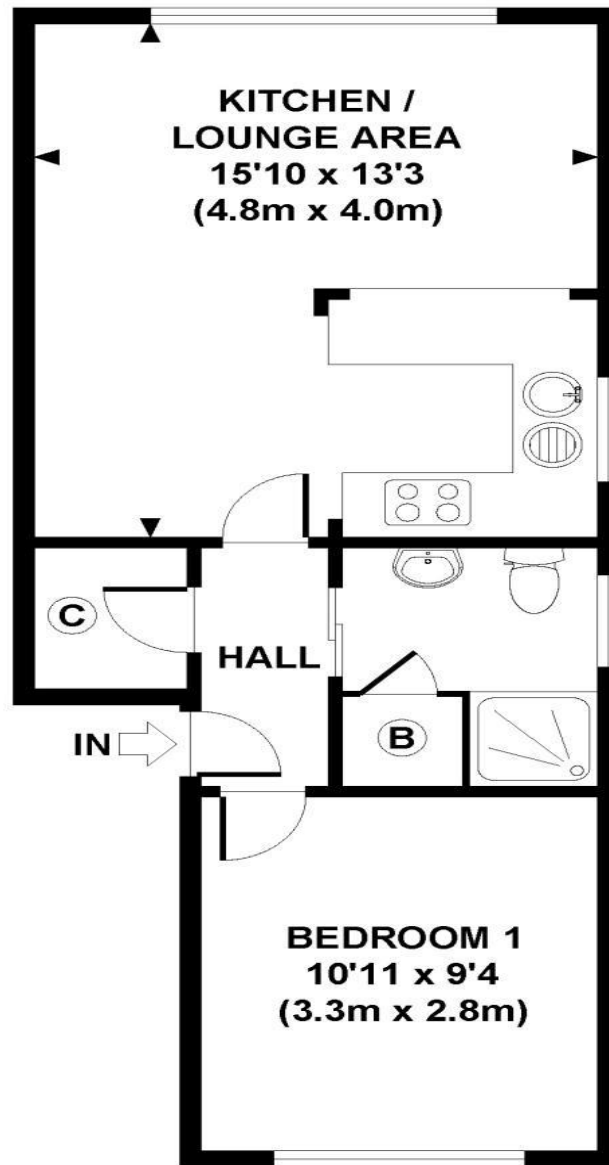
South Wimbledon 119 Merton Road London SW19 1ED

Colliers Wood 44 High Street London SW19 2AB

020 8544 2828

info@SW19.com

SW19.com



**GROUND FLOOR
GROSS INTERNAL
FLOOR AREA 405 SQ FT**



APPROX. GROSS INTERNAL FLOOR AREA 405 SQ FT / 38 SQ M
Copyright SW19

**Floorplans are for identification and guideline purposes only, not to scale.
Compliant with RICS code of measuring practice.**

These particulars are for guidance only and should not be relied upon as a statement or representation of fact. All measurements given are approximate only and should not be relied upon for ordering carpets, equipment etc. Purchasers should satisfy themselves by inspection or otherwise as to the accuracy of the statements contained within. Neither SW group limited or related companies or their employees are able to confirm structural conditions of the property or that any appliances or other facilities are in working order. Purchasers are strongly recommended to arrange their own survey.

SW19 Estate Agents Ltd.

Wimbledon Town 83b Hartfield Crescent London SW19 3RZ

South Wimbledon 119 Merton Road London SW19 1ED

Colliers Wood 44 High Street London SW19 2AB

020 8544 2828

info@SW19.com

SW19.com