



Tamarisk Cottage, Pershore Road, Little Comberton

£275,000

- Two Bedroom Cottage
- Living Room with multi fuel log burner
- Kitchen
- Downstairs family bathroom
- Rear Garden
- Sought after village location
- **THIS PROPERTY CAN BE VIEWED 7-DAYS A WEEK**

Nigel Poole
& Partners

tel 01386 556506

www.nigelpoolestateagents.co.uk

Tamarisk Cottage, Pershore Road, Little Comberton

£275,000

**** CHARMING TWO BEDROOM SEMI DETACHED COTTAGE WITH BEAMED CEILINGS AND WOOD BURNER**** Kitchen, living room, (with wood burner heating radiators & hot water), downstairs family bathroom, two bedrooms, established enclosed rear garden. With shared access and driveway with parking. No onward chain. The picturesque village of Little Comberton is on the North edge of the Cotswolds and the northern side of Bredon Hill. Located on the outskirts of Pershore with daily buses to and from the village.

Front

Shared driveway leading to private parking area and outside lighting.

Kitchen 13' 3" x 8' 4" (4.04m x 2.54m)

Door to front. Double glazed window to side aspect, ceiling lights. range of work tops with work surfaces over and tiled splashbacks. Tiled flooring. Sink with mixer taps and drainer. Cupboard housing hot water tank with separate immersion heater. Space for fridge freezer and plumbing for washing machine.



Living Room 14' 1" x 13' 8" (4.29m x 4.16m)

Two double glazed window to front aspect. Exposed beams to ceiling. Wall lights. Door to bathroom. Multi fuel log burner which heats the water and radiators with brick fireplace surround. Stairs leading to first floor landing.



Downstairs Family Bathroom

Double glazed obscure window to front aspect. Panelled bath with shower over. Pedestal wash hand basin, low level WC. Tiled splashbacks and flooring. Ceiling lights. Radiator.

First Floor Landing

Leading to bedrooms. Ceiling light. Brick exposed feature wall.

Bedroom One 11' 0" x 8' 2" (3.35m x 2.49m)

Double glazed window to front aspect. Ceiling light.

Bedroom Two 13' 8" x 5' 11" (4.16m x 1.80m)

Double glazed window to side aspect. Double glazed sky light. Ceiling light. Restricted head room in areas.

Rear Garden

A well established rear garden with fencing to sides benefiting from a lawned area, a variety of shrubs and borders, timber shed and outside tap.



Council Tax Band: C

Tenure: Freehold

Access and Parking

With shared access and driveway with parking.

Broadband and Mobile information:

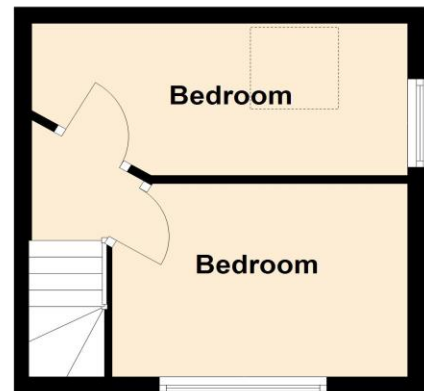
To check broadband speeds and mobile coverage for this property please visit: <https://www.ofcom.org.uk/phones-telecoms-and-internet/advice-for-consumers/advice/ofcom-checker> and enter postcode WR10 3EW





Ground Floor

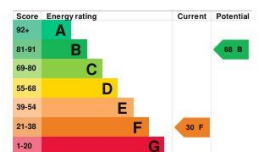
Approx. 31.0 sq. metres (333.7 sq. feet)



First Floor

Approx. 18.5 sq. metres (198.6 sq. feet)

Total area: approx. 49.5 sq. metres (532.3 sq. feet)



MISREPRESENTATION ACT 1991

These particulars do not constitute, nor constitute part of, an offer or contract. Whilst every care is taken to ensure accuracy, no responsibility for errors or misdescription is accepted. Any intending purchaser must satisfy himself by inspection or otherwise as to the correctness of each of the statements contained in these particulars. The vendor does not make or give to Nigel Poole and Hancox as Agents, nor any employees of the Agents any authority to make or give representation or warranty whatever in relation to the property.

N446 Ravensworth 01670 713330

rightmove.co.uk
The UK's number one property website