



Holloway, Pershore

£525,000

- Four bedroom detached property
- Living room with multi fuel burner
- Partly renovated
- Low maintenance garden with summerhouse
- Driveway with parking for several vehicles
- Sought after town location
- Planning approved for single story side and rear extensions with internal alterations
- ****VIEWING AVAILABLE 7 DAYS A WEEK****

**Nigel Poole
& Partners**

Holloway, Pershore

£525,000

****FOUR BEDROOM DETACHED FAMILY HOME IN A SOUGHT-AFTER LOCATION**** Entrance Hall; living room; dining room; kitchen; utility; w.c.; four double bedrooms and a family bathroom. Garden with patio area and laid to lawn. Summerhouse with electric and water. Driveway for multiple vehicles. The property has been partly renovated by the current owners and will require further updating. Easy access to Pershore town centre with its independent retailers, the Pershore train station, Worcestershire Parkways train station and excellent links to the motorway.

Front

Low maintenance driveway for multiple vehicles. Mature hedge for privacy. Double gates to rear.

Hallway 14' 11" x 5' 11" (4.54m x 1.80m)

Oak door to entrance hall. Doors to the living room, dining room, kitchen and bedroom one. Ladder radiator. Stairs rising to first floor.

Living Room 10' 9" x 3' 3" (3.27m x 0.99m)

Double glazed bay window to the front aspect. Multi fuel burner with oak mantel. Radiator. Down lights. Oak veneer door.



Dining Room 13' 8" x 10' 5" (4.16m x 3.17m)

Double glazed French doors to the rear patio. Gas fire. Pendant light fitting. Radiator.

Kitchen 12' 4" x 11' 4" Max (3.76m x 3.45m)

Double glazed windows to the rear garden. Range of wall and base units with work top. Tiled splash back. One and a half sink with drainer and mixer tap. Electric oven and gas hob. Space for under counter fridge and freezer. Pendant light. Radiator.



Utility Room 4' 3" x 6' 7" (1.29m x 2.01m)

Double glazed obscure wooden door to the rear patio. Space and plumbing for a washing machine and tumble dryer. Work top and shelving above. Door to w.c.

W.C. 4' 4" x 4' 4" (1.32m x 1.32m)

Pedestal hand wash basin. Low level w.c. Partly tiled walls. Radiator.

Bedroom One 9' 7" x 15' 4" Min (2.92m x 4.67m)

Double glazed window to the front aspect. Oak veneer doors to the wardrobes and single wardrobe housing the Worcester Combi boiler. Down lights. Radiator.

Bedroom Two 13' 9" Min x 15' 4" (4.19m x 4.67m)

Double glazed window to the front aspect. Oak veneer built in wardrobe with light. Down lights. Radiator.

Bedroom Three 10' 5" x 8' 4" (3.17m x 2.54m)

Double glazed window to the side aspect. Down lights. Radiator. Access to loft.

Bedroom Four 8' 7" x 10' 5" (2.61m x 3.17m)

Double glazed window to the rear aspect. Down lights. Radiator.

Bathroom 6' 1" x 5' 4" (1.85m x 1.62m)

Obscure double glazed window to the rear aspect. Pedestal hand wash basin with mixer tap. Low level w.c. Ladder radiator. Walk in mixer shower with rainfall shower, hose and jets.

Leasehold: Freehold

Council Tax Band: E

Broadband and internet information

To check broadband speeds and mobile coverage for this property please visit: <https://www.ofcom.org.uk/phones-telecoms-and-internet/advice-for-consumers/advice/ofcom-checker> and enter postcode WR10 1HW

Garden

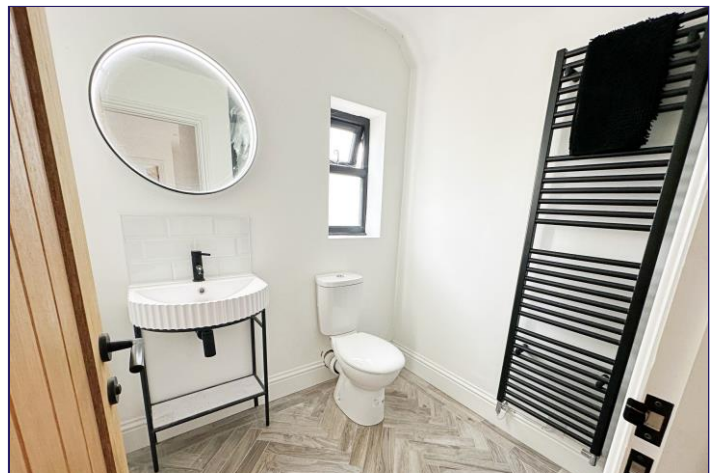
Patio seating area with steps down to the lawn. Gravel area and path to the summer house which has electric and water.

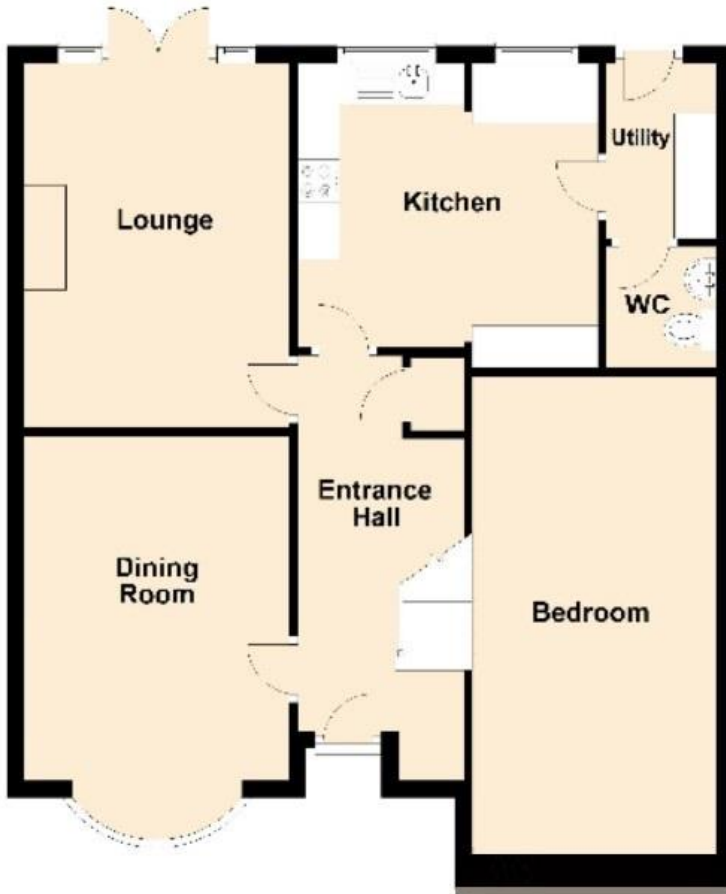


Planning Approval

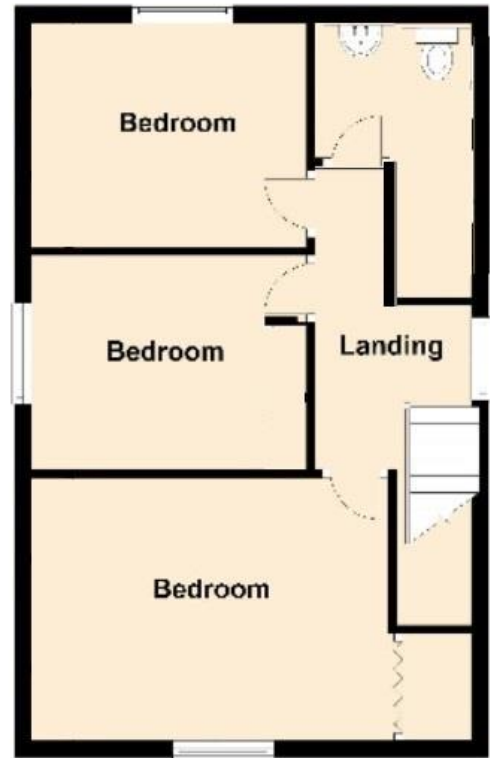
Planning approved 27.03.23 for single story side and rear extensions with internal alterations. Works to begun before the expiration of three years from the date of this permission.

Application no: W/23/00537/HP Wychavon District Council.





Ground Floor
Approx. 73.9 sq. metres (795.7 sq. feet)



First Floor
Approx. 45.2 sq. metres (486.6 sq. feet)

Total area: approx. 119.1 sq. metres (1282.2 sq. feet)

Score	Energy rating	Current	Potential
92+	A		
81-91	B		
69-80	C		75 C
55-68	D		
39-54	E	50 E	
21-38	F		
1-20	G		

MISREPRESENTATION ACT 1991

These particulars do not constitute, nor constitute part of, an offer or contract. Whilst every care is taken to ensure accuracy, no responsibility for errors or misdescription is accepted. Any intending purchaser must satisfy himself by inspection or otherwise as to the correctness of each of the statements contained in these particulars. The vendor does not make or give to Nigel Poole and Hancox as Agents, nor any employees of the Agents any authority to make or give representation or warranty whatever in relation to the property.

N446 Ravensworth 01670 713330

