



Head Street Pershore

£250,000

- Three bedroom semi-detached house
- Living/dining room with bay window
- Breakfast kitchen
- Well maintained garden with brick-built storage
- Sought after town location with amenities
- NO UPWARD CHAIN

Nigel Poole
& Partners

tel 01386 556506

www.nigelpoolestateagents.co.uk

Head Street

Pershore

£250,000

****THREE BEDROOM SEMI-DETACHED HOUSE IN THE HEART OF PERSHORE**** Entrance hall; lounge/dining room and kitchen. On the first floor there are three bedrooms and a family bathroom. The rear garden is laid to lawn with a patio seating and mature planting. Close to Pershore town centre with amenities; independent retailers, supermarkets, restaurants, pubs, theatre, leisure centre and the beautiful Abbey and Abbey park.

Front

Walled low maintenance fore garden. Storm porch.

Entrance Hall

Door to the lounge. Stairs rising to the first floor.

Lounge 16' 7" x 13' 9" (5.05m x 4.19m) max

Double glazed window to the front aspect. Fireplace with gas fire. Radiator. Door to the kitchen.



Kitchen 16' 5" x 7' 2" (5.00m x 2.18m) max

Double glazed window to the rear aspect. Wall and base units surmounted by worksurface. Stainless steel sink and drainer with mixer tap. Tiled splashbacks. Space for appliances. Space and plumbing for a washing machine. Pantry. Radiator. Obscure double glazed door to the garden, w.c and storage.



Landing

Double glazed window to the side aspect. Doors to three bedrooms and the bathroom. Airing cupboard housing the gas fired Worcester boiler.

Bedroom One 12' 6" x 12' 4" (3.81m x 3.76m) max

Double glazed window to the front aspect. Radiator.

Bedroom Two 8' 8" x 7' 9" (2.64m x 2.36m) max

Double glazed window to the front aspect. Radiator.

Bedroom Three 11' 5" x 7' 5" (3.48m x 2.26m)

Double glazed window to the rear aspect. Radiator.

Bathroom 8' 0" x 4' 2" (2.44m x 1.27m)

Obscure double glazed window to the rear aspect. Panelled bath with mains fed shower. Wash hand basin and low flush w.c. Tiled splashbacks.

23 High Street, Pershore WR10 1AA

Garden

Laid to lawn with planting. Patio seating area. Brick built storage.



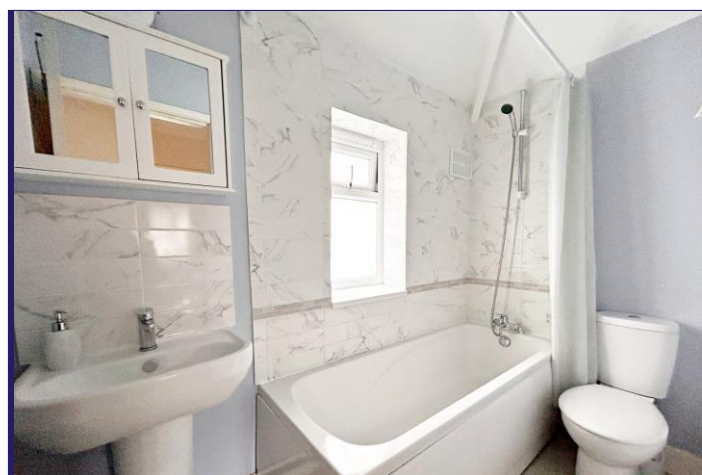
Tenure: Freehold

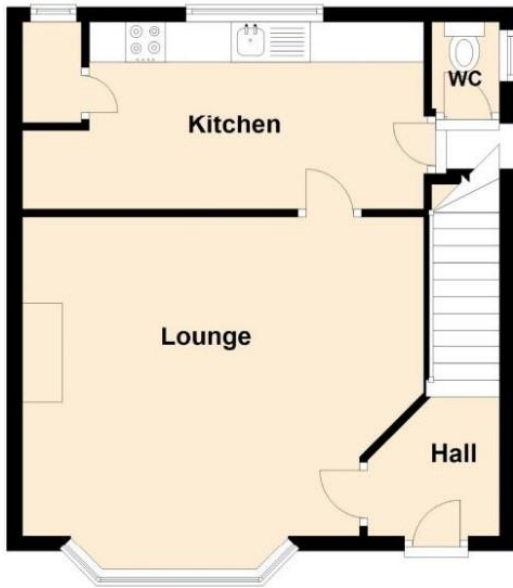
Council Tax Band: C

Broadband and Mobile Information

To check broadband speeds and mobile coverage for this property please visit:

<https://www.ofcom.org.uk/phones-telecoms-and-internet/advice-for-consumers/advice/ofcom-checker> and enter postcode **WR10 1DA**



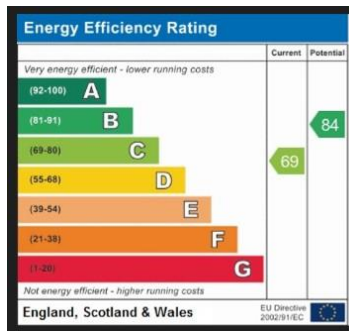


Ground Floor
Approx. 38.3 sq. metres (412.6 sq. feet)



First Floor
Approx. 38.8 sq. metres (418.1 sq. feet)

Total area: approx. 77.2 sq. metres (830.7 sq. feet)



MISREPRESENTATION ACT 1991

These particulars do not constitute, nor constitute part of, an offer or contract. Whilst every care is taken to ensure accuracy, no responsibility for errors or misdescription is accepted. Any intending purchaser must satisfy himself by inspection or otherwise as to the correctness of each of the statements contained in these particulars. The vendor does not make or give to Nigel Poole and Hancox as Agents, nor any employees of the Agents any authority to make or give representation or warranty whatever in relation to the property.

N446 Ravensworth 01670 713330

