



**FORTUNE & COATES**

The People's Estate Agent

<https://www.fortuneandcoates.co.uk>



**75 Hookfield, Harlow, CM18 6QQ**

**£375,000**

Fortune and Coates are pleased to welcome to the market this four bedroom end of terrace house situated in the popular and convenient location of Hookfield, Harlow.

Upon entering, you are greeted by an inviting hallway that leads to a spacious living room, bathed in natural light, making it an ideal space for entertaining family and friends. Conveniently located on the ground floor is a generously sized double bedroom, complete with an en-suite shower room, providing both privacy and convenience.

The kitchen is well-appointed, featuring a mix of wall and base units, an integrated oven and hob, and space for a fridge/freezer with plumbing available for a washing machine and ample cupboard space with a patio door opens directly to the rear garden, enhancing the connection between indoor and outdoor living.

Living room 9'1" x 19'2" (2.78 x 5.85)

Kitchen 12'5" x 19'2" (3.79 x 5.85)

Bedroom 9'5" x 9'7" (2.88 x 2.93)

Bedroom 13'9" x 10'8" (4.21 x 3.27)

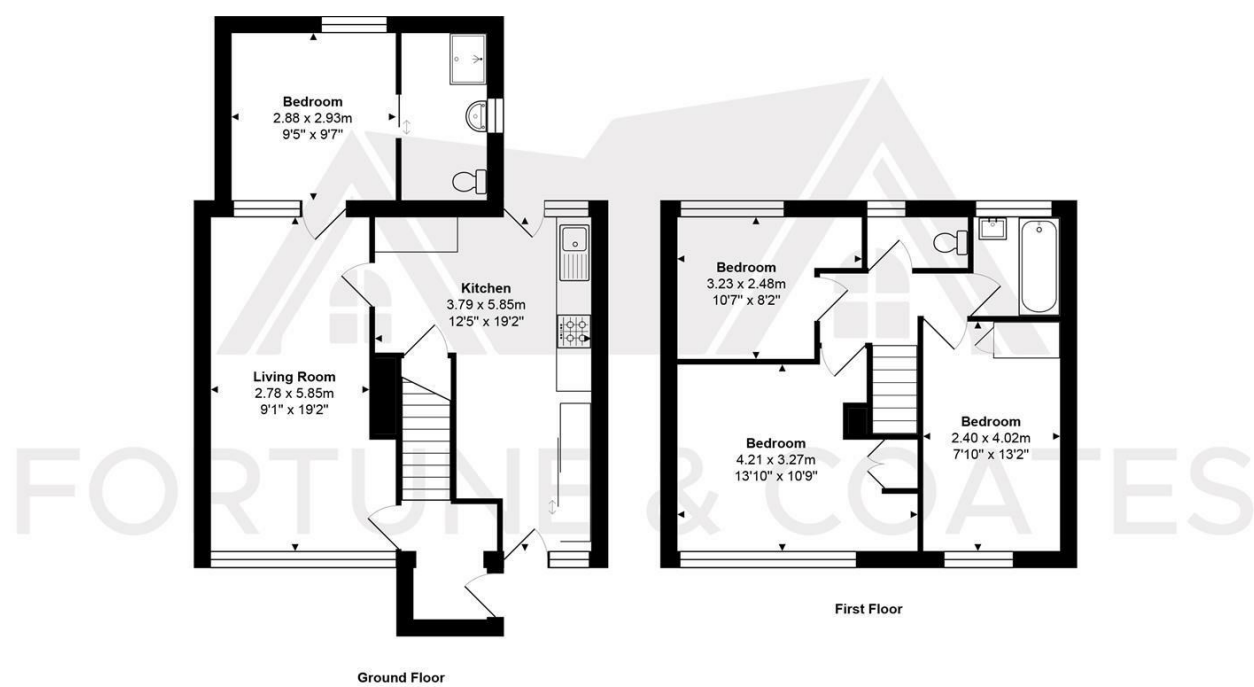
Bedroom 7'10" x 13'2" (2.40 x 4.02)

Bedroom 10'7" x 8'1" (3.23 x 2.48)

AGENT NOTE: The information provided about this property does not constitute or form part of an offer or contract, nor may it be regarded as representations. All interested parties must verify accuracy and your solicitor must verify tenure/lease information, fixtures & fittings and, where the property has been extended/converted, planning/building regulation consents. All dimensions are approximate and quoted for guidance only as are floor plans which are not to scale, and their accuracy cannot be confirmed. Reference to appliances and/or services does not imply that they are necessarily in working order or fit for the purpose.



Floor Plan

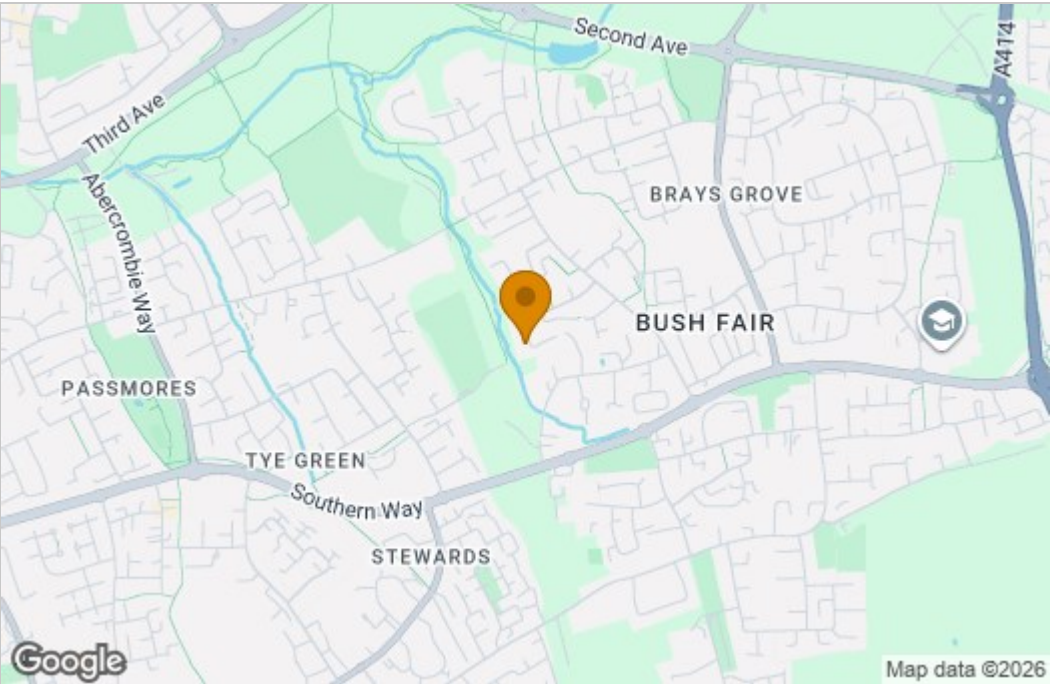


Total Area: approx. 94.2 m<sup>2</sup> ... 1014 ft<sup>2</sup>

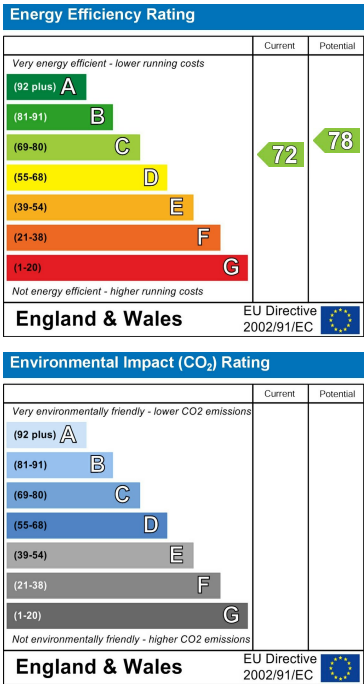
THE FLOORPLAN IS FOR ILLUSTRATIVE PURPOSES ONLY AND IS NOT TO SCALE.  
Measurements and features are approximate and may differ from the actual property. Verify all details independently; no liability is accepted for errors or omissions.

Property marketing provided by [www.fotomarketing.co.uk](http://www.fotomarketing.co.uk)

Area Map



Energy Efficiency Graph



These particulars, whilst believed to be accurate are set out as a general outline only for guidance and do not constitute any part of an offer or contract. Intending purchasers should not rely on them as statements of representation of fact, but must satisfy themselves by inspection or otherwise as to their accuracy. No person in this firm's employment has the authority to make or give any representation or warranty in respect of the property.