



FORTUNE & COATES

The People's Estate Agent



26 Lavender Close, Harlow, CM20 3QJ

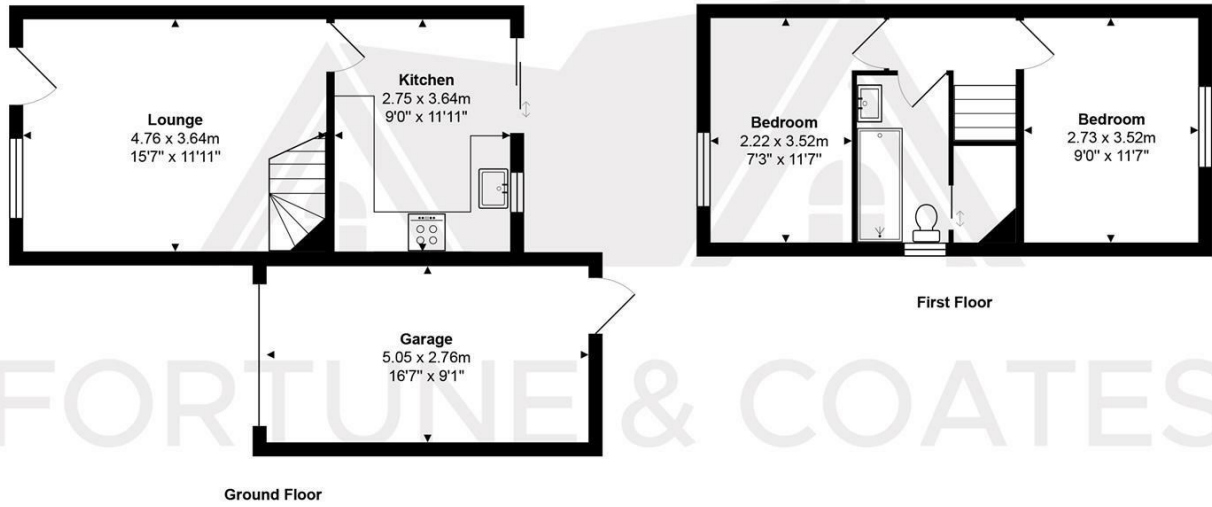
Offers in excess of £350,000

Fortune and Coates are delighted to welcome to the market this lovely two bedroom semi detached family home situated in Lavender Close, Harlow.

Upon entering, you are welcomed into a spacious and well-lit living room, which serves as the heart of the home. This inviting space features a staircase leading to the first floor and provides seamless access to the kitchen, making it ideal for both relaxation and entertaining.

The kitchen is thoughtfully designed with a combination of wall and base units, featuring an integrated oven and hob, complemented by a tiled backsplash. There is ample cupboard space, along with designated room for a fridge/freezer, ensuring that all your culinary needs are met.

Floor Plan

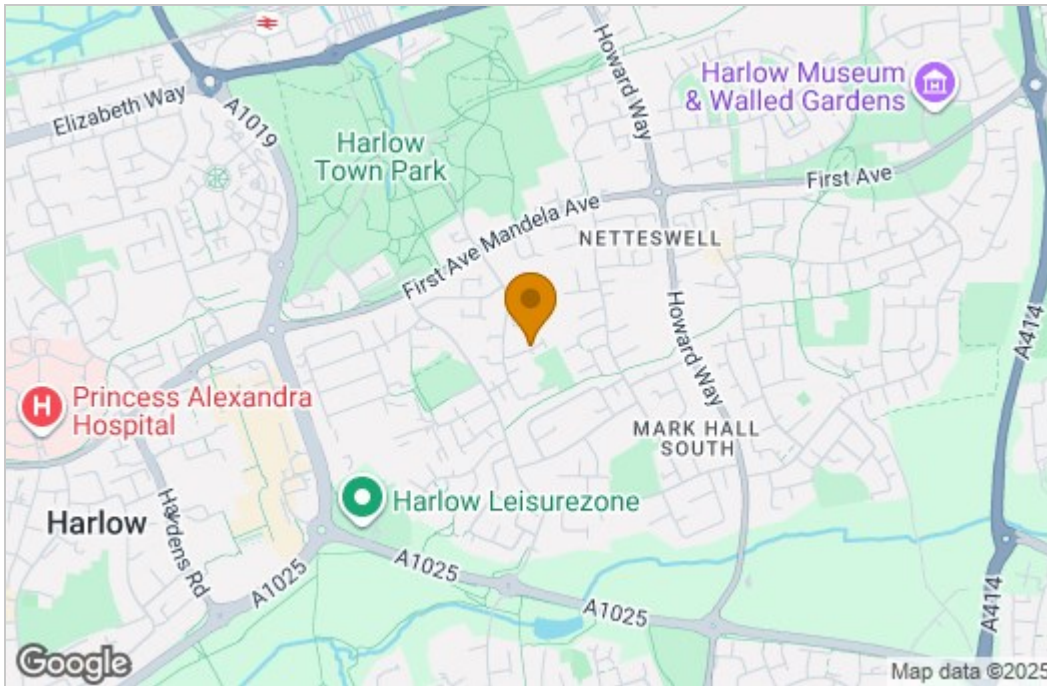


Total Area: approx. 69.6 m² ... 749 ft²

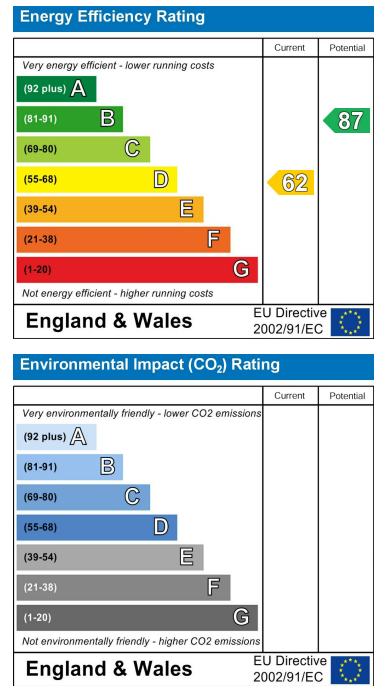
THE FLOORPLAN IS FOR ILLUSTRATIVE PURPOSES ONLY AND IS NOT TO SCALE. Measurements and features are approximate and may differ from the actual property. Verify all details independently; no liability is accepted for errors or omissions.

Property marketing provided by www.fotomarketing.co.uk

Area Map



Energy Efficiency Graph



These particulars, whilst believed to be accurate are set out as a general outline only for guidance and do not constitute any part of an offer or contract. Intending purchasers should not rely on them as statements of representation of fact, but must satisfy themselves by inspection or otherwise as to their accuracy. No person in this firm's employment has the authority to make or give any representation or warranty in respect of the property.