



**FORTUNE & COATES**

The People's Estate Agent

<https://www.fortuneandcoates.co.uk>



**FORTUNE & COATES**



## 117 Torkildsen Way , Harlow, CM20 1AY

Guide Price: £340,000 - £360,000

A well presented two double bedroom end of terrace home in a sought after location. The property has been upgraded and well looked after by the current owner boasting a recently modernised family bathroom, downstairs cloakroom, well maintained kitchen, double aspect 20ft lounge/diner, car port parking for two cars and a low maintenance rear garden. Torkildsen Way is within close walking distance of Harlow Town mainline Train Station, Harlow Town Centre and Princess Alexandra Hospital. This property is also being offered with no onward chain.

**Guide price £340,000**

# 117 Torkildsen Way

, Harlow, CM20 1AY



- Chain Free
- Car Port
- Two Double Bedrooms
- Walking Distance To Harlow Town Station
- Large Lounge/Diner
- Close To Amenities

## Living room/dining room

13'2" x 19'9" (4.02 x 6.04)

## Kitchen

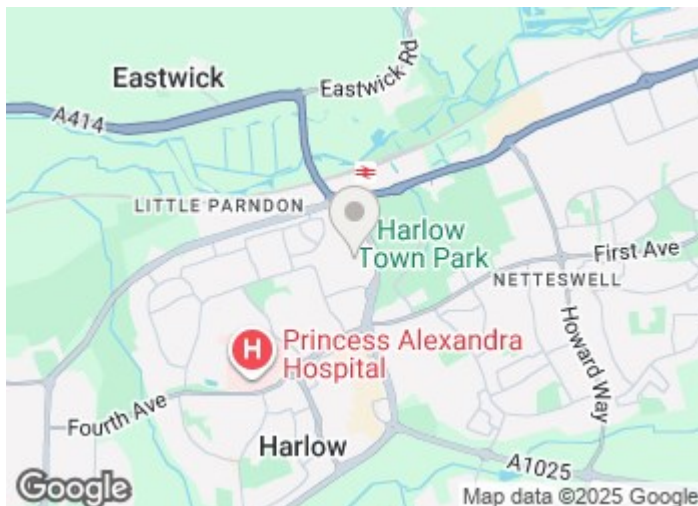
6'6" x 9'10" (1.99 x 3.00)

## Bedroom

13'3" x 13'2" (4.04 x 4.03)

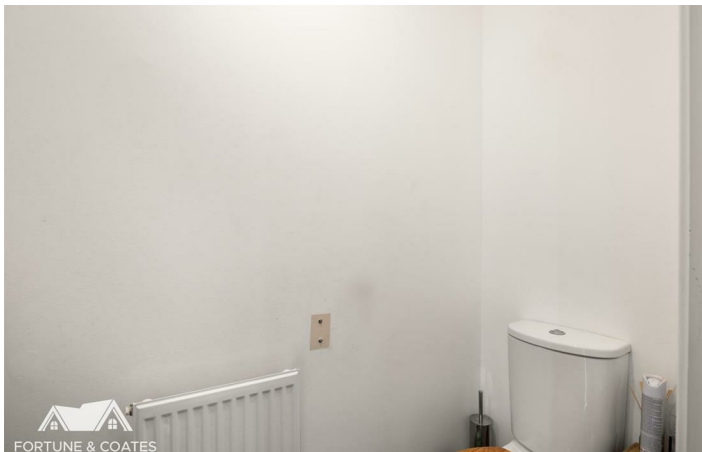
## Bedroom

13'3" x 9'5" (4.04 x 2.88)

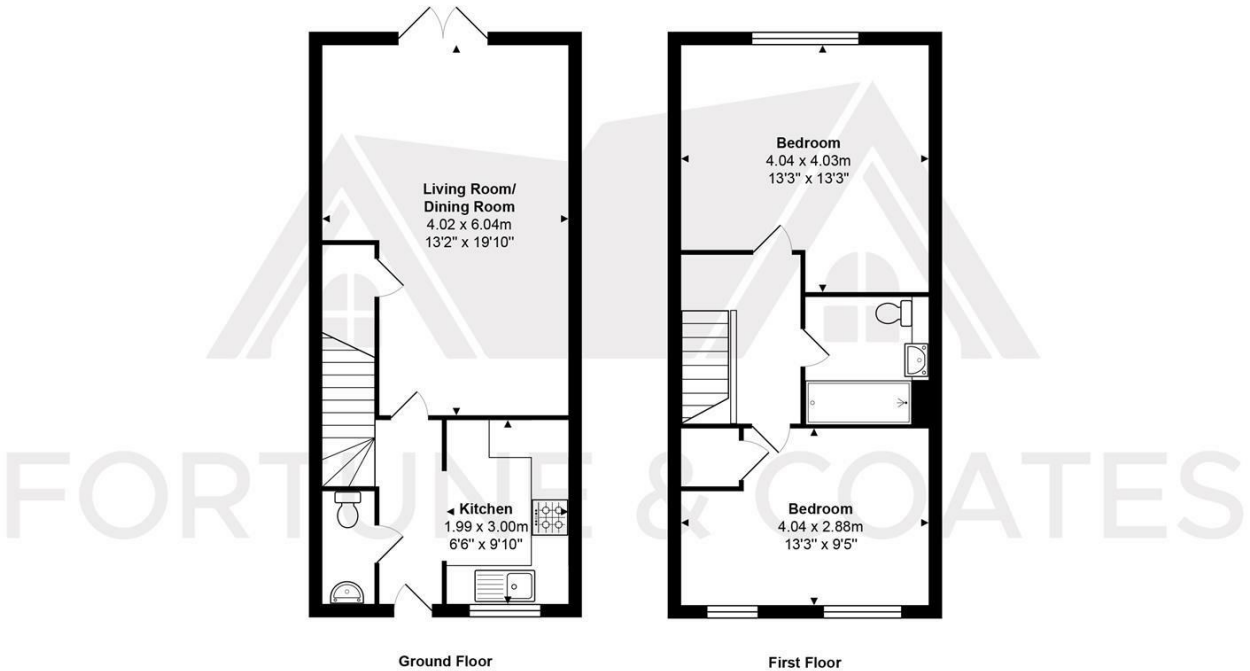


[Directions](#)





Floor Plan



Total Area: approx. 73.5 m<sup>2</sup> ... 791 ft<sup>2</sup>

THE FLOORPLAN IS FOR ILLUSTRATIVE PURPOSES ONLY AND IS NOT TO SCALE.  
Measurements and features are approximate and may differ from the actual property. Verify all details independently; no liability is accepted for errors or omissions.

Property marketing provided by [www.fotomarketing.co.uk](http://www.fotomarketing.co.uk)

These particulars, whilst believed to be accurate are set out as a general outline only for guidance and do not constitute any part of an offer or contract. Intending purchasers should not rely on them as statements of representation of fact, but must satisfy themselves by inspection or otherwise as to their accuracy. No person in this firms employment has the authority to make or give any representation or warranty in respect of the property.

