



FORTUNE & COATES

The People's Estate Agent

<https://www.fortuneandcoates.co.uk>



153 Challinor, Harlow, CM17 9XE

Guide price £465,000

Guide Price: £465,000 - £475,000

Fortune and Coates are excited to welcome to the market this outstanding three bedroom detached family home situated in the sought after location of Challinor, Harlow.

This home is immaculate throughout and hosts a number of features. The home comprises an inviting entrance hallway with cloakroom/W.C and stairs to the first floor. The living room is light, bright and comfortable with dual aspects and feature fireplace. Entering the sunny conservatory where its perfect for relaxing and looking out over the rear garden. The impressive kitchen/dining room features a range of modern wall and base units with a number of integrated appliances including oven, hob, dishwasher and washing machine. There is space for an american fridge/freezer, plenty of cupboard space and quartz work surfaces and splash backs and the dining

Living Room 15'10" x 9'10" (4.83 x 3.02)

Kitchen/Dining Room 15'10" x 16'3" (4.83 x 4.96)

Conservatory 8'10" x 8'0" (2.71 x 2.46)

Store Room 8'5" x 12'6" (2.57 x 3.82)

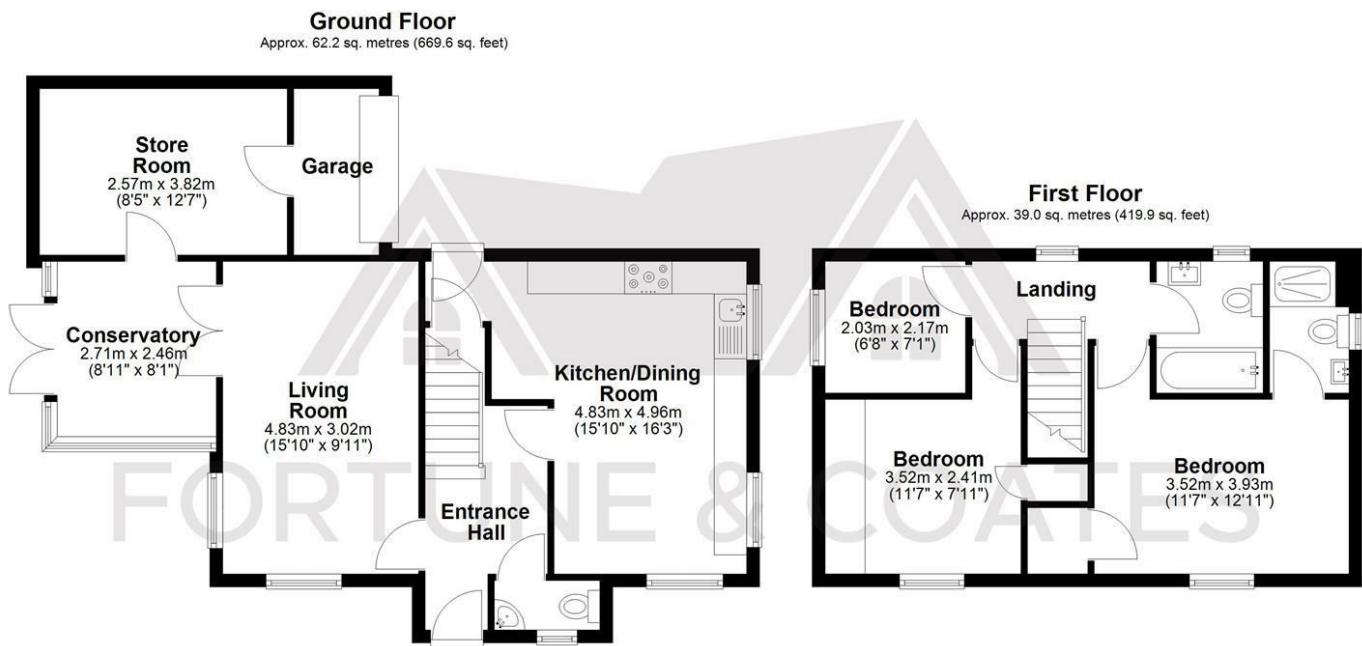
Primary Bedroom 11'6" x 12'10" (3.52 x 3.93)

Bedroom 11'6" x 7'10" (3.52 x 2.41)

Bedroom 6'7" x 7'1" (2.03 x 2.17)

AGENT NOTE: The information provided about this property does not constitute or form part of an offer or contract, nor may it be regarded as representations. All interested parties must verify accuracy and your solicitor must verify tenure/lease information, fixtures & fittings and, where the property has been extended/converted, planning/building regulation consents. All dimensions are approximate and quoted for guidance only as are floor plans which are not to scale and their accuracy cannot be confirmed. Reference to appliances and/or services does not imply that they are necessarily in working order or fit for the purpose.

Floor Plan

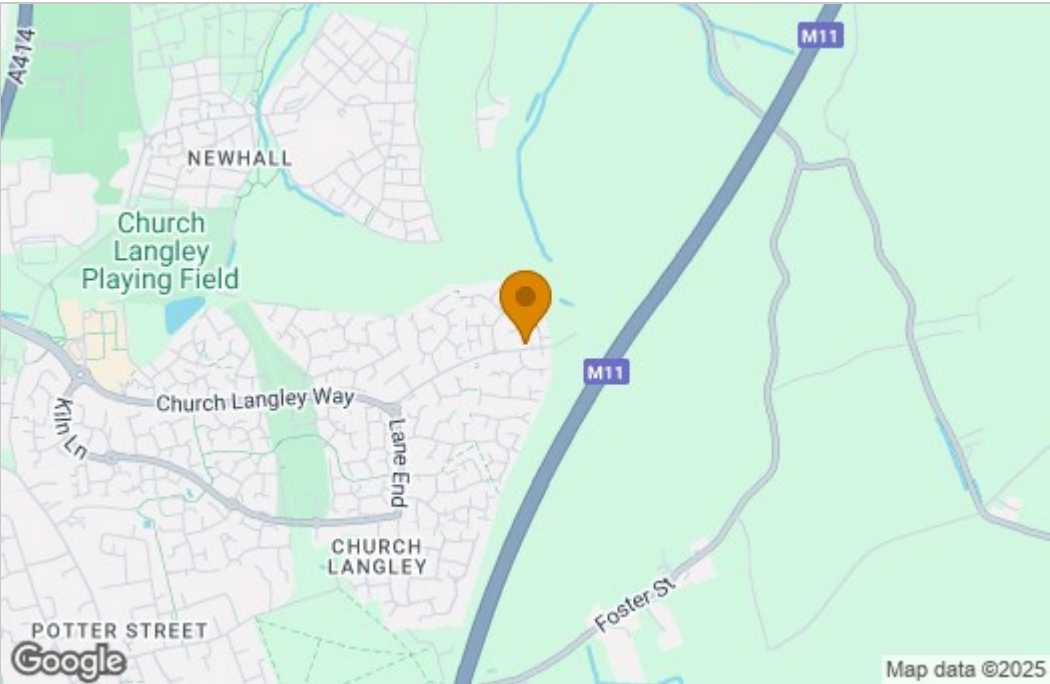


Total area: approx. 101.2 sq. metres (1089.5 sq. feet)

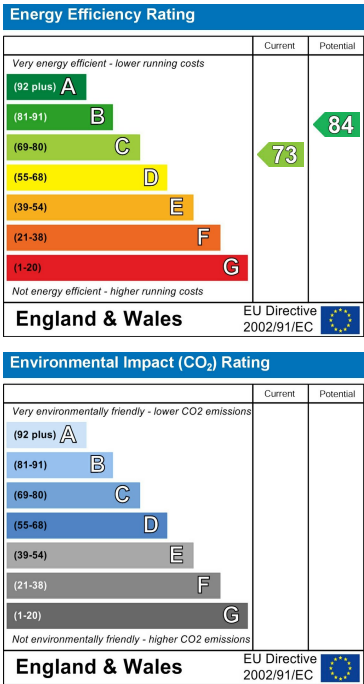
THE FLOORPLAN IS FOR ILLUSTRATIVE PURPOSES ONLY AND IS NOT TO SCALE. Measurements and features are approximate and may differ from the actual property. Verify all details independently; no liability is accepted for errors or omissions.

Property marketing provided by www.fotomarketing.co.uk

Area Map



Energy Efficiency Graph



These particulars, whilst believed to be accurate are set out as a general outline only for guidance and do not constitute any part of an offer or contract. Intending purchasers should not rely on them as statements of representation of fact, but must satisfy themselves by inspection or otherwise as to their accuracy. No person in this firm's employment has the authority to make or give any representation or warranty in respect of the property.