



FORTUNE & COATES

The People's Estate Agent

<https://www.fortuneandcoates.co.uk>



8 Sakins Croft, Harlow, CM18 7BN

Offers in excess of £475,000

Fortune and Coates are delighted to welcome to the market this outstanding four bedroom semi-detached family home situated in the sought after and convenient location of Sakins Croft, Harlow.

This home is presented to a very high standard throughout and comprises an inviting entrance hallway with stairs to the first floor. The open plan living room/dining room spans the length of the property with dual aspects, it bright airy and comfortable with ample room for formal and family dining with french doors opening out to the rear garden. The modern kitchen offers a range of base units with integrated oven hob, extractor and fridge/freezer, plumbing for a washing machine and dishwasher and plenty of cupboard space.

Upstairs, the first floor features three well proportioned bedrooms and a stylish family bathroom with separate walk in shower. To the top floor is the primary bedroom

Living Room/Diner 31'1" x 11'1" max (9.49 x 3.39 max)

Kitchen 9'4" x 8'3" (2.86 x 2.52)

Primary Bedroom 20'4" x 14'2" max (6.22 x 4.32 max)

En-Suite Shower Room

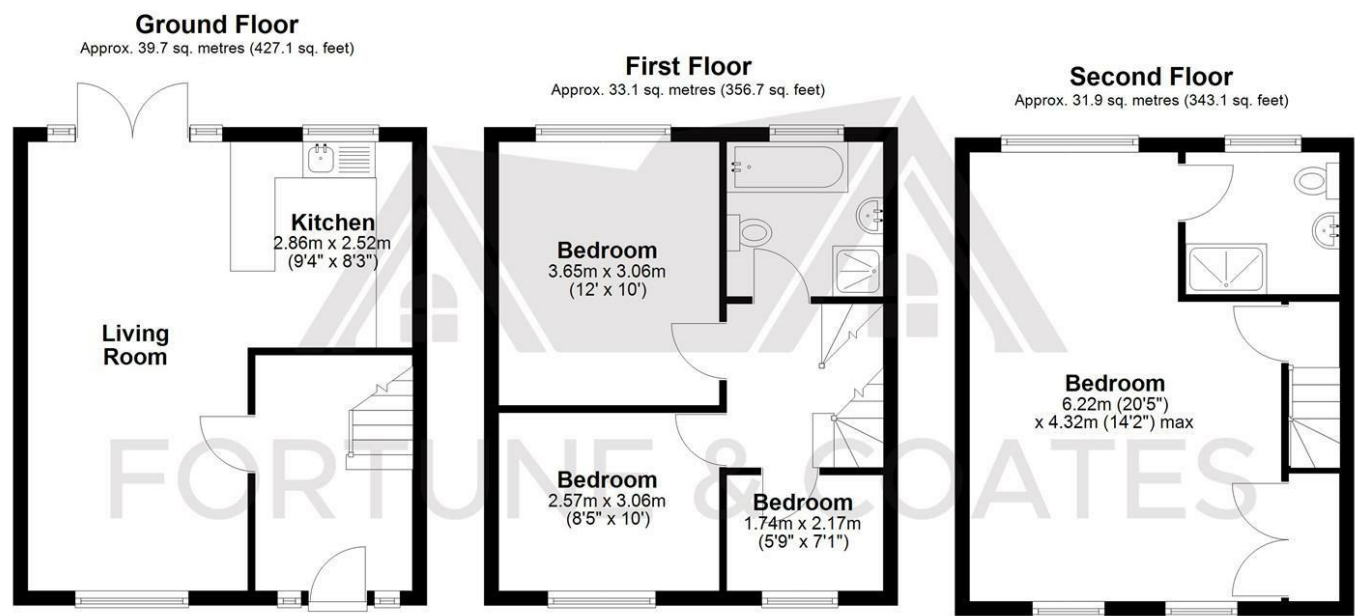
Bedroom 11'11" x 10'0" (3.65 x 3.06)

Bedroom 8'5" x 10'0" (2.57 x 3.06)

Bedroom 5'8" x 7'1" (1.74 x 2.17)

AGENT NOTE: The information provided about this property does not constitute or form part of an offer or contract, nor may it be regarded as representations. All interested parties must verify accuracy and your solicitor must verify tenure/lease information, fixtures & fittings and, where the property has been extended/converted, planning/building regulation consents. All dimensions are approximate and quoted for guidance only as are floor plans which are not to scale and their accuracy cannot be confirmed. Reference to appliances and/or services does not imply that they are necessarily in working order or fit for the purpose.

Floor Plan

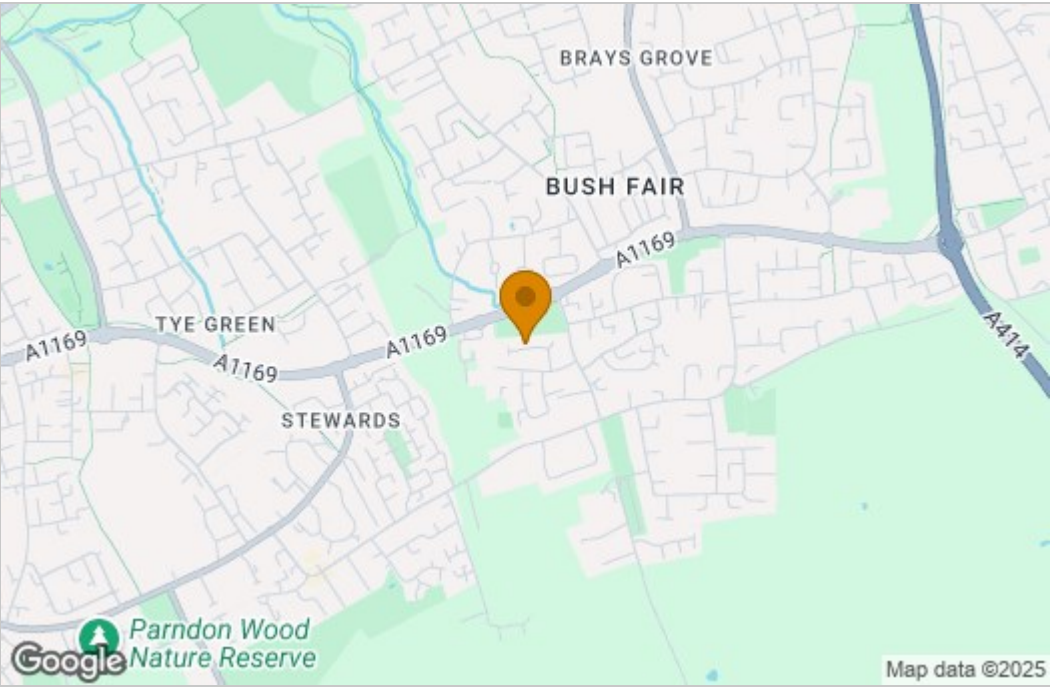


Total area: approx. 104.7 sq. metres (1126.9 sq. feet)

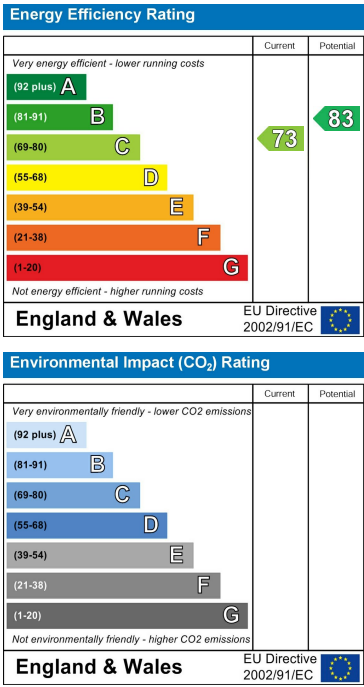
THE FLOORPLAN IS FOR ILLUSTRATIVE PURPOSES ONLY AND IS NOT TO SCALE. Measurements and features are approximate and may differ from the actual property. Verify all details independently; no liability is accepted for errors or omissions.

Property marketing provided by www.fotomarketing.co.uk

Area Map



Energy Efficiency Graph



These particulars, whilst believed to be accurate are set out as a general outline only for guidance and do not constitute any part of an offer or contract. Intending purchasers should not rely on them as statements of representation of fact, but must satisfy themselves by inspection or otherwise as to their accuracy. No person in this firms employment has the authority to make or give any representation or warranty in respect of the property.