



FORTUNE & COATES

The People's Estate Agent

<https://www.fortuneandcoates.co.uk>



48 Tylney Croft, Harlow, CM19 4LT

Asking price £375,000

Fortune and Coates are delighted to welcome to the market this lovely extended three bedroom mid terraced family home situated in the sought after location of Tylney Croft, Harlow.

This home is well presented throughout and comprises an inviting entrance porch that leads through to the hallway with stairs to the first floor and storage. The comfortable light and bright lounge has a bay window to the front and feature fireplace and opens into the open plan kitchen/dining room with a range of modern wall and base units, integrated oven and hob, dishwasher and fridge/freezer and ample cupboard space. The dining area has the room to host formal and family dining with patio doors that overlook the rear garden. The utility room offers further storage with plumbing for a washing machine and space for a tumble dryer. There is also a very convenient downstairs shower room with walk in shower, low level W.C and modern sink.

Lounge 14'9" x 9'11" (4.51 x 3.03)

Kitchen/Dining Room 10'7" x 16'1" (3.25 x 4.91)

Utility 8'2" x 6'11" (2.51 x 2.11)

Downstairs Bathroom

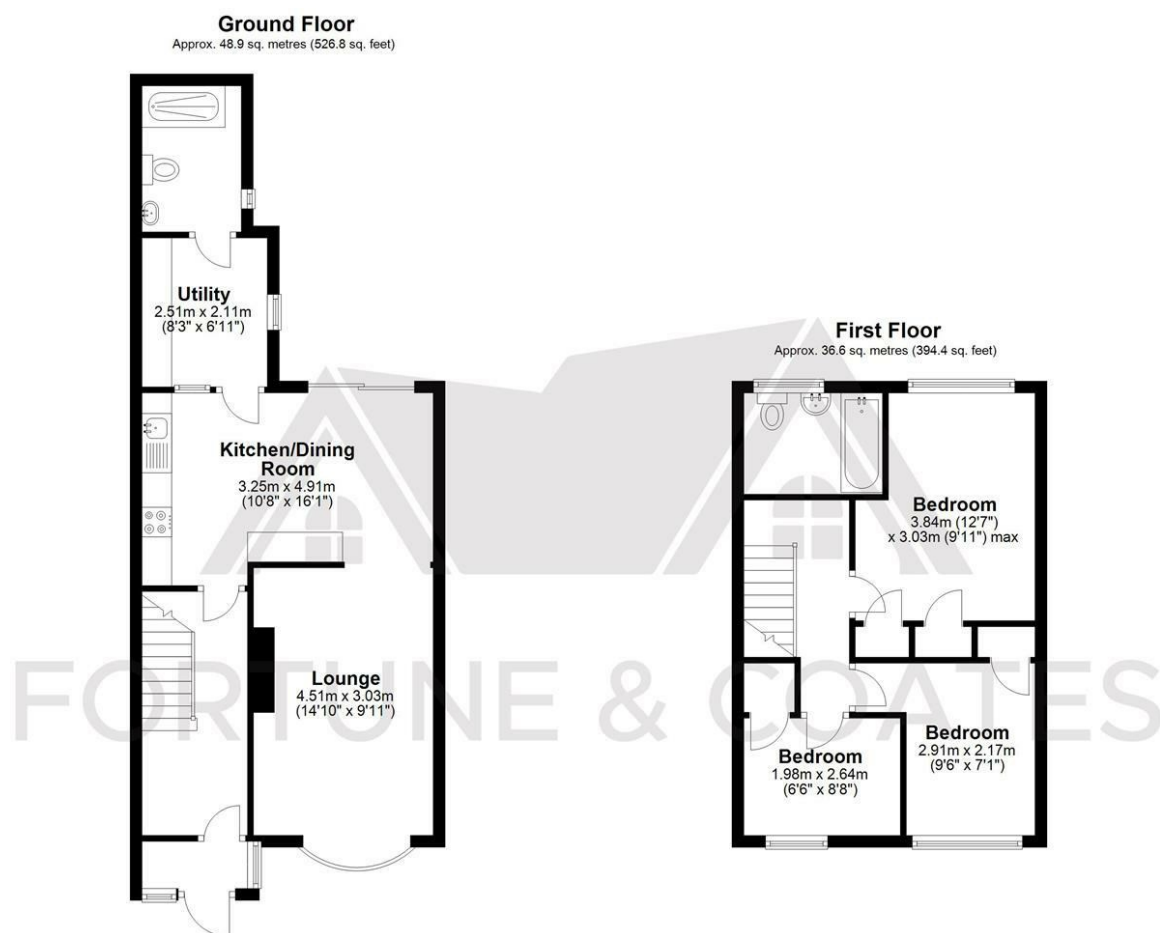
Bedroom 12'7" x 9'11" max (3.84 x 3.03 max)

Bedroom 9'6" x 7'1" (2.91 x 2.17)

Bedroom 6'5" x 8'7" (1.98 x 2.64)

AGENT NOTE: The information provided about this property does not constitute or form part of an offer or contract, nor may it be regarded as representations. All interested parties must verify accuracy and your solicitor must verify tenure/lease information, fixtures & fittings and, where the property has been extended/converted, planning/building regulation consents. All dimensions are approximate and quoted for guidance only as are floor plans which are not to scale and their accuracy cannot be confirmed. Reference to appliances and/or services does not imply that they are necessarily in working order or fit for the purpose.

Floor Plan

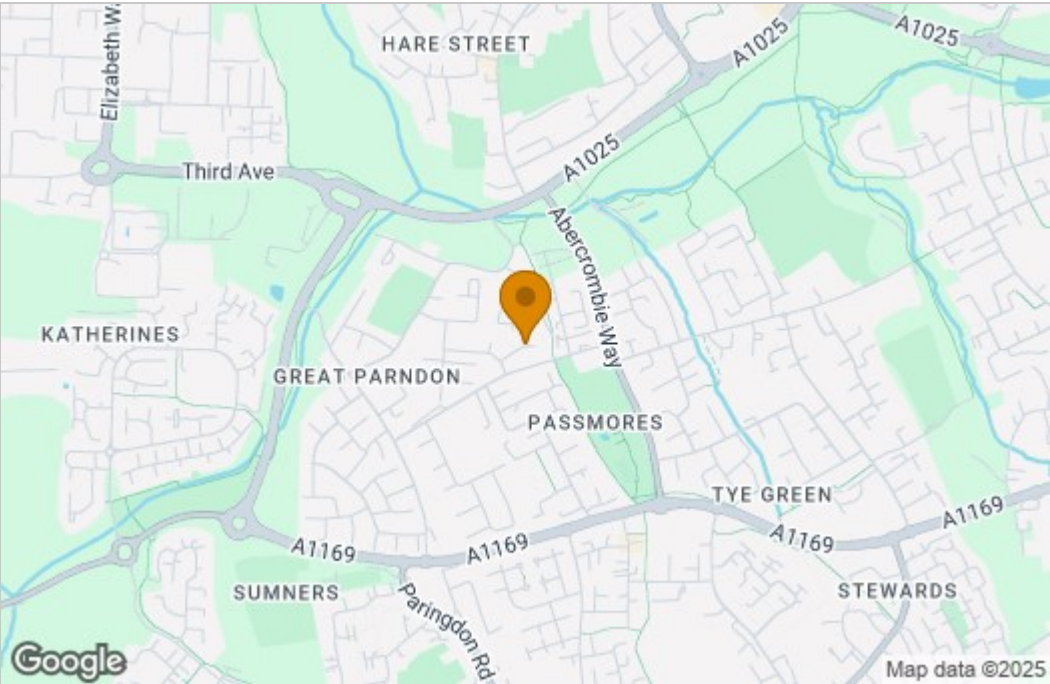


Total area: approx. 85.6 sq. metres (921.3 sq. feet)

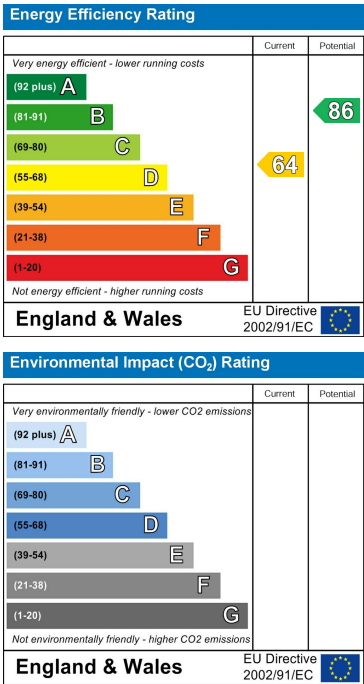
THE FLOORPLAN IS FOR ILLUSTRATIVE PURPOSES ONLY AND IS NOT TO SCALE. Measurements and features are approximate and may differ from the actual property. Verify all details independently; no liability is accepted for errors or omissions.

Property marketing provided by www.fotomarketing.co.uk

Area Map



Energy Efficiency Graph



These particulars, whilst believed to be accurate are set out as a general outline only for guidance and do not constitute any part of an offer or contract. Intending purchasers should not rely on them as statements of representation of fact, but must satisfy themselves by inspection or otherwise as to their accuracy. No person in this firm's employment has the authority to make or give any representation or warranty in respect of the property.