



FORTUNE & COATES

The People's Estate Agent

<https://www.fortuneandcoates.co.uk>



9 Wheatfields, Harlow, CM17 0HW

£550,000

Fortune and Coates are excited to offer to the market this lovely four bedroom detached family home with garage situated in the sought after location of Wheatfields, Old Harlow.

This home is well presented throughout and comprises an inviting entrance hallway with stairs leading to the first floor and cloakroom/W.C. The lounge is light and comfortable with feature fireplace and leads out to the sunny conservatory that overlooks the rear garden. The dining room offers dual aspects and ample space for family gatherings. The shaker style kitchen offers a range of wall and base units with integrated oven and hob, plumbing for washing machine, breakfast bar and plenty of cupboard space.

Upstairs features the master bedroom that boasts an en-suite shower room and fitted wardrobes and three further well proportioned bedrooms and family bathroom

Lounge 18'2" x 11'8" (5.54 x 3.56)

Dining Room 13'7" x 8'9" (4.16 x 2.69)

Kitchen/Diner 25'3" x 7'10" (7.72 x 2.39)

Conservatory 8'5" x 7'11" (2.57 x 2.43)

Bedroom 12'9" x 11'8" (3.91 x 3.56)

En-Suite

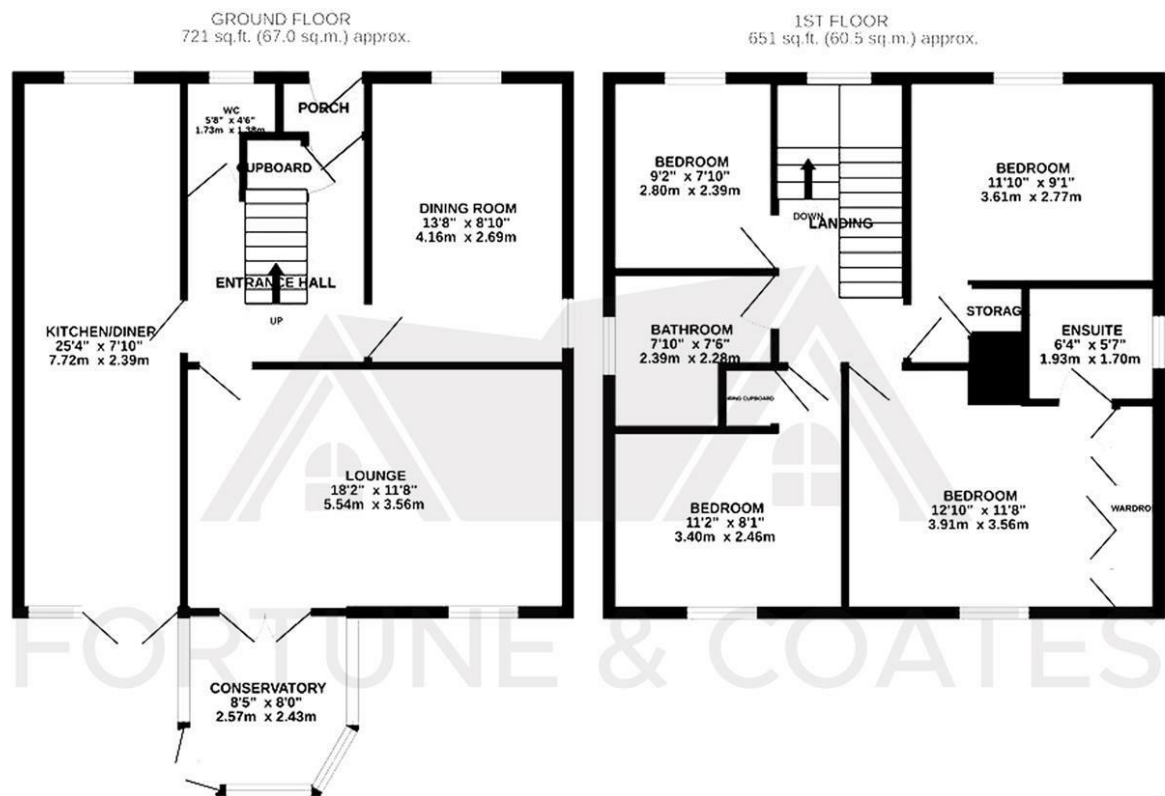
Bedroom 11'1" x 8'0" (3.40 x 2.46)

Bedroom 11'10" x 9'1" (3.61 x 2.77)

Bedroom 9'2" x 7'10" (2.8 x 2.39)

AGENT NOTE: The information provided about this property does not constitute or form part of an offer or contract, nor may be it be regarded as representations. All interested parties must verify accuracy and your solicitor must verify tenure/lease information, fixtures & fittings and, where the property has been extended/converted, planning/building regulation consents. All dimensions are approximate and quoted for guidance only as are floor plans which are not to scale and their accuracy cannot be confirmed. Reference to appliances and/or services does not imply that they are necessarily in working order or fit for the purpose.

Floor Plan

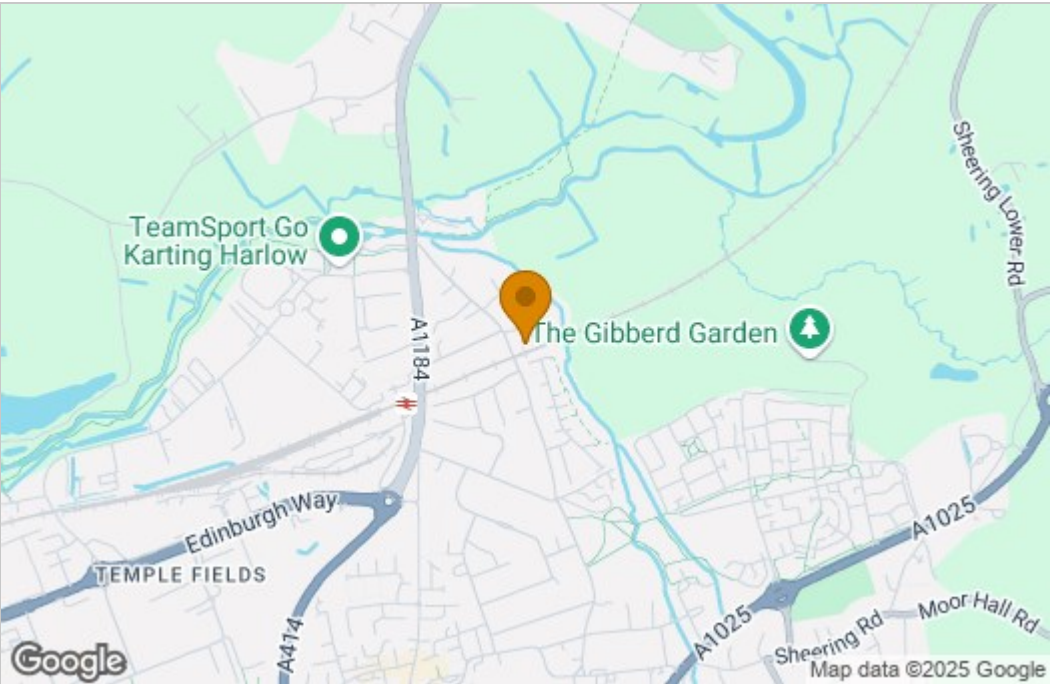


Total area: approx. 127.5 sq. metres (1373 sq. feet)

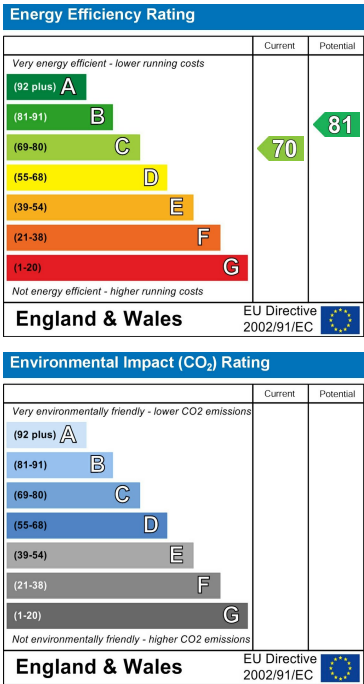
THE FLOORPLAN IS FOR ILLUSTRATIVE PURPOSES ONLY AND IS NOT TO SCALE. Measurements and features are approximate and may differ from the actual property. Verify all details independently; no liability is accepted for errors or omissions.

Property marketing provided by www.fotomarketing.co.uk

Area Map



Energy Efficiency Graph



These particulars, whilst believed to be accurate are set out as a general outline only for guidance and do not constitute any part of an offer or contract. Intending purchasers should not rely on them as statements of representation of fact, but must satisfy themselves by inspection or otherwise as to their accuracy. No person in this firms employment has the authority to make or give any representation or warranty in respect of the property.