



FORTUNE & COATES

The People's Estate Agent

<https://www.fortuneandcoates.co.uk>



FORTUNE & COATES



49 Tithelands, Harlow, CM19 5NB

£400,000

Fortune and Coates are pleased to offer to the market this extended three bedroom end of terraced family home situated in the sought after location of Tithelands, Harlow.

The home is very well presented throughout and comprises an inviting entrance hallway with cloakroom/W.C with storage leading to a bright and spacious modern kitchen with a range of wall and base units with integrated oven and hob, bay window to the front and ample cupboard space.

The generous lounge opens into the bright dining room/area with patio doors overlooking the rear garden.

Upstairs features two double bedrooms and a generous single bedroom with a modern family bathroom with separate walk in shower. Outside, the immaculate rear garden is laid to lawn with a patio area for entertaining, rear access and integrated rear storage cupboard.

Kitchen 13'3" x 14'2" (4.04 x 4.32)

Lounge 9'8" x 17'4" (2.95 x 5.30)

Dining Room 5'4" x 14'11" (1.63 x 4.57)

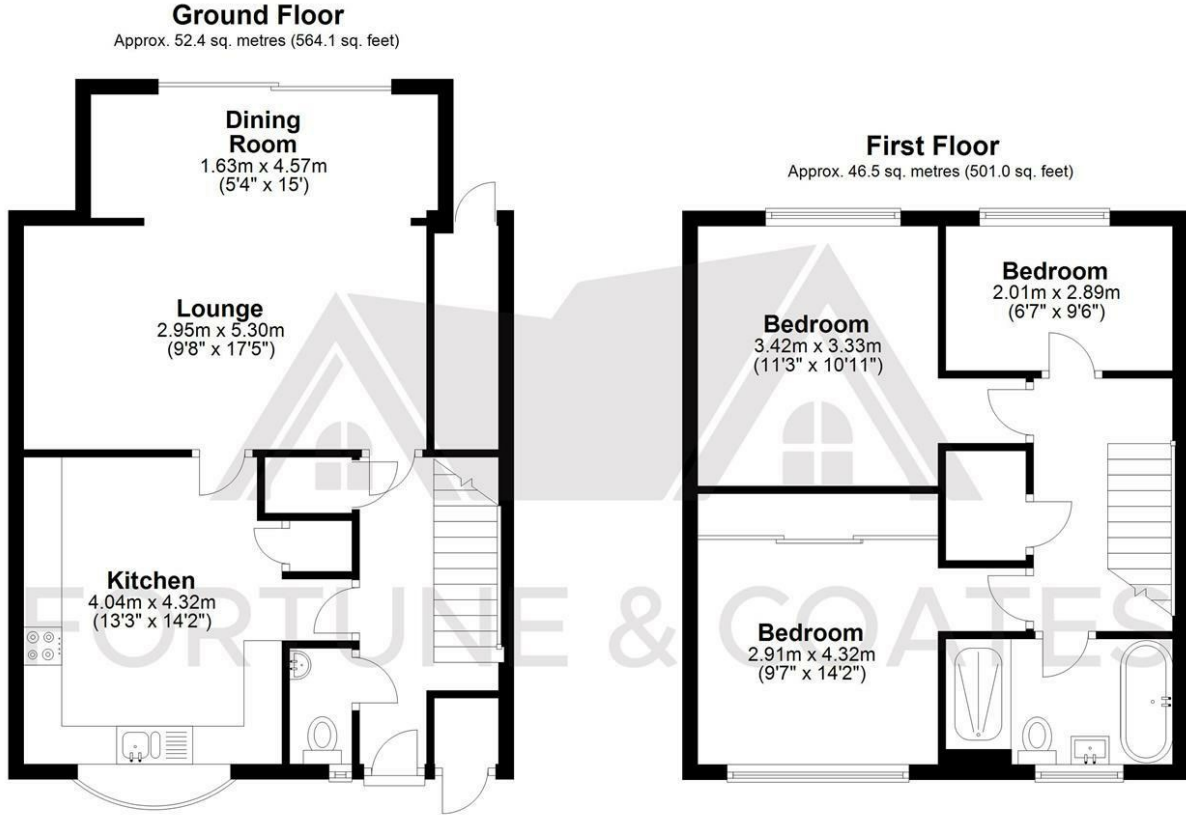
Bedroom 9'6" x 14'2" (2.91 x 4.32)

Bedroom 11'2" x 10'11" (3.42 x 3.33)

Bedroom 6'7" x 9'5" (2.01 x 2.89)

AGENT NOTE: The information provided about this property does not constitute or form part of an offer or contract, nor may it be regarded as representations. All interested parties must verify accuracy and your solicitor must verify tenure/lease information, fixtures & fittings and, where the property has been extended/converted, planning/building regulation consents. All dimensions are approximate and quoted for guidance only as are floor plans which are not to scale and their accuracy cannot be confirmed. Reference to appliances and/or services does not imply that they are necessarily in working order or fit for the purpose.

Floor Plan

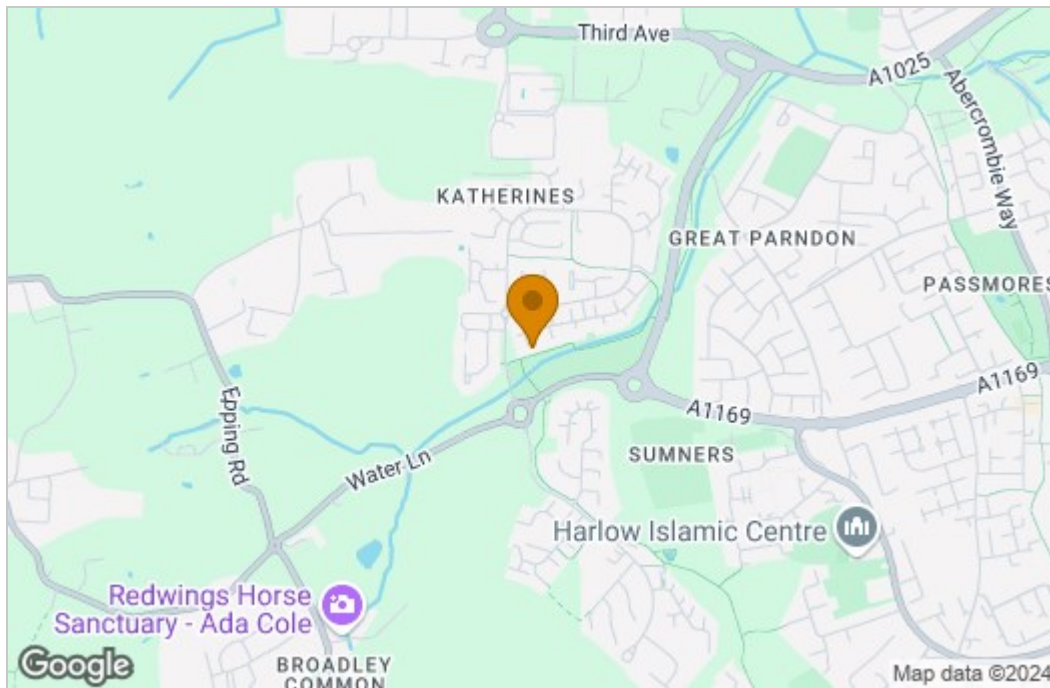


Total area: approx. 99.0 sq. metres (1065.2 sq. feet)

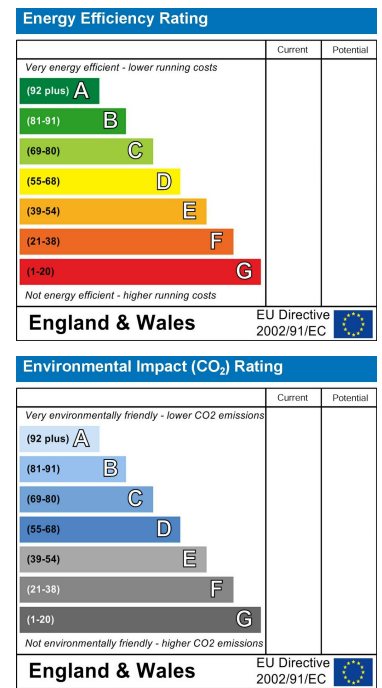
THE FLOORPLAN IS FOR ILLUSTRATIVE PURPOSES ONLY AND IS NOT TO SCALE. Measurements and features are approximate and may differ from the actual property. Verify all details independently; no liability is accepted for errors or omissions.

Property marketing provided by www.fotomarketing.co.uk

Area Map



Energy Efficiency Graph



These particulars, whilst believed to be accurate are set out as a general outline only for guidance and do not constitute any part of an offer or contract. Intending purchasers should not rely on them as statements of representation of fact, but must satisfy themselves by inspection or otherwise as to their accuracy. No person in this firm's employment has the authority to make or give any representation or warranty in respect of the property.