

<https://www.fortuneandcoates.co.uk>



FORTUNE & COATES

The People's Estate Agent



FORTUNE & COATES



7 Willow Close, Harlow, CM18 7FN

Asking price £400,000

Fortune and Coates are pleased to offer to the market this three bedroom mid terraced family home situated in the popular location of Willow Close, Harlow.

The home is immaculately presented throughout and comprises outdoor storage cupboard leading to an inviting entrance hallway with cloakroom/W.C and under stairs storage.

The stylish lounge offers lots of natural light and leads through to the spacious kitchen/diner which offers a range of high gloss wall and base units with integrated oven and hob, fridge/freezer, washing machine and dishwasher and the dining area offers ample space for family dining with french doors that lead out to the rear garden.

Upstairs offers three generously proportioned bedrooms and a modern part tiled family bathroom with in bath shower.

Outside, the rear garden is mainly laid to lawn with a plentiful patio area for entertaining and rear access with parking for two vehicles.

Living Room

Kitchen/Diner

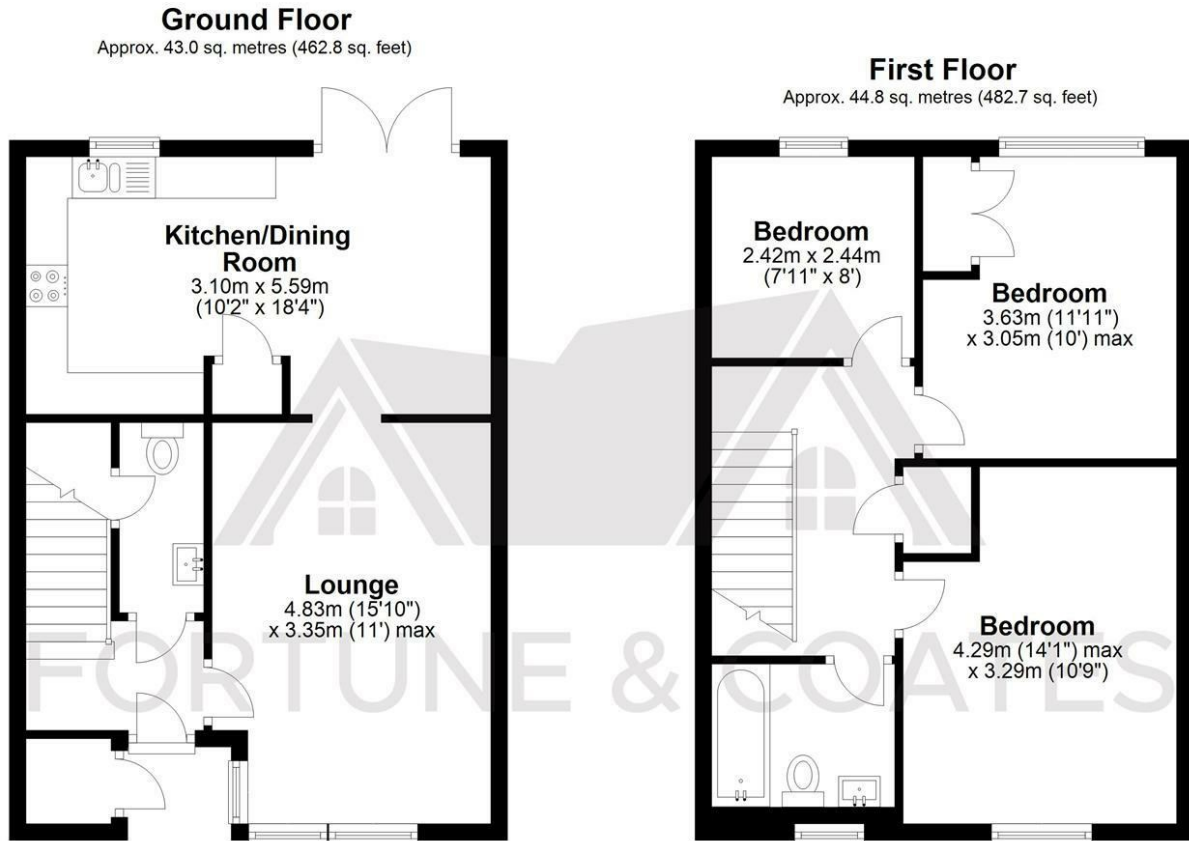
Bedroom

Bedroom

Bedroom

AGENT NOTE: The information provided about this property does not constitute or form part of an offer or contract, nor may it be regarded as representations. All interested parties must verify accuracy and your solicitor must verify tenure/lease information, fixtures & fittings and, where the property has been extended/converted, planning/building regulation consents. All dimensions are approximate and quoted for guidance only as are floor plans which are not to scale and their accuracy cannot be confirmed. Reference to appliances and/or services does not imply that they are necessarily in working order or fit for the purpose.

Floor Plan

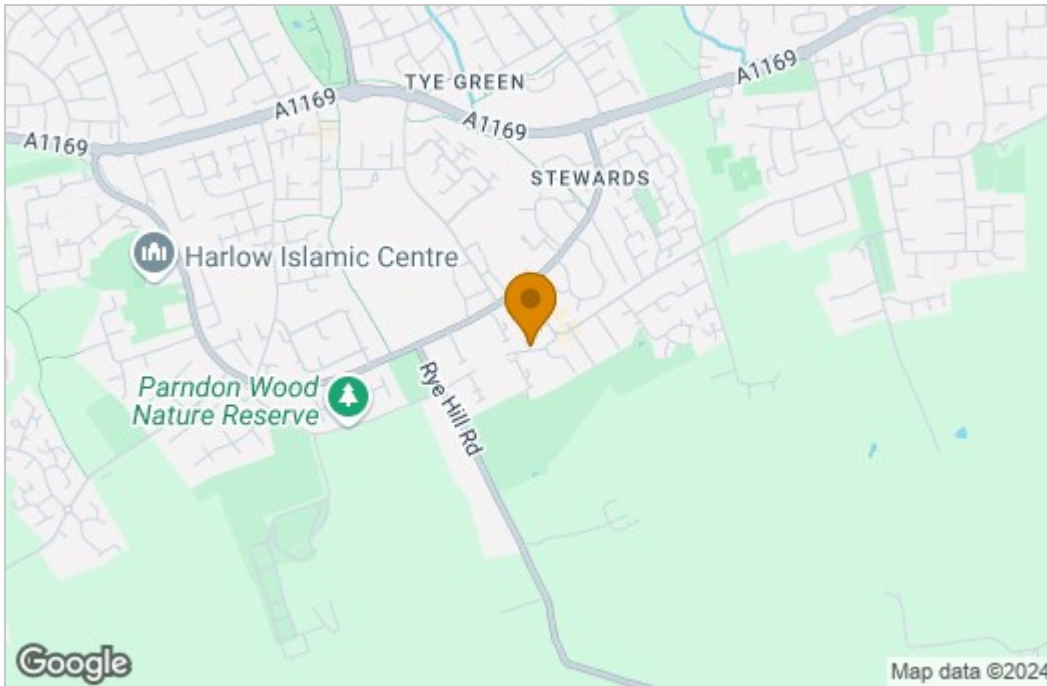


Total area: approx. 87.8 sq. metres (945.5 sq. feet)

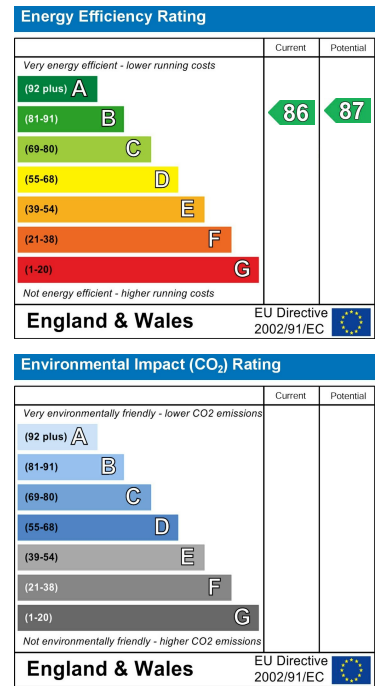
THE FLOORPLAN IS FOR ILLUSTRATIVE PURPOSES ONLY AND IS NOT TO SCALE. Measurements and features are approximate and may differ from the actual property. Verify all details independently; no liability is accepted for errors or omissions.

[Property marketing provided by www.fotomarketing.co.uk](http://www.fotomarketing.co.uk)

Area Map



Energy Efficiency Graph



These particulars, whilst believed to be accurate are set out as a general outline only for guidance and do not constitute any part of an offer or contract. Intending purchasers should not rely on them as statements of representation of fact, but must satisfy themselves by inspection or otherwise as to their accuracy. No person in this firm's employment has the authority to make or give any representation or warranty in respect of the property.