



FORTUNE & COATES

The People's Estate Agent

<https://www.fortuneandcoates.co.uk>



FORTUNE & COATES



16 Plumtree Drive, Harlow, CM17 0FP

Asking price £96,000

40% Shared Ownership

Fortune and Coates are pleased to offer to the market this one bedroom ground floor apartment situated in the sought after location of Plumtree Drive, Gilden Park, Harlow.

The home is approximately four years old and is being offered with 40% shared ownership and comprises entrance hallway with storage cupboard. Open plan lounge/kitchen/diner with lots of natural light, range of modern base and wall units, integrated oven and hob and ample space for a dining table and the lounge area has access to a private "L" shaped balcony.

The bedroom is double in size with plenty of space for wardrobes and storage and there is a modern part tiled bathroom with over bath shower.

Lounge/Kitchen/Diner 11'6" x 23'11" max (3.53 x 7.31 max)

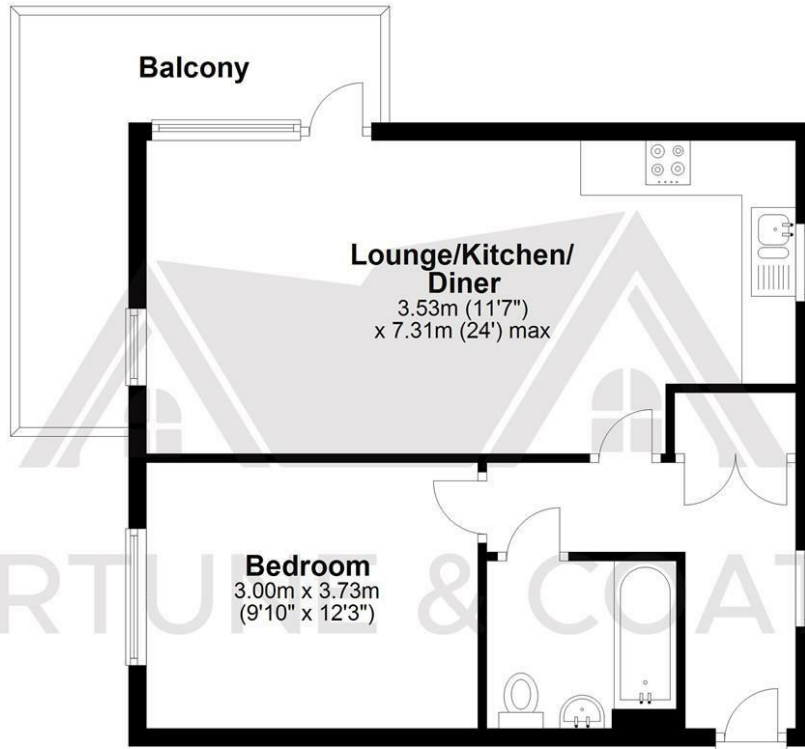
Bedroom 9'10" x 12'2" (3.0 x 3.73)

AGENT NOTE: The information provided about this property does not constitute or form part of an offer or contract, nor may it be regarded as representations. All interested parties must verify accuracy and your solicitor must verify tenure/lease information, fixtures & fittings and, where the property has been extended/converted, planning/building regulation consents. All dimensions are approximate and quoted for guidance only as are floor plans which are not to scale and their accuracy cannot be confirmed. Reference to appliances and/or services does not imply that they are necessarily in working order or fit for the purpose

Floor Plan

Ground Floor Apartment

Approx. 48.4 sq. metres (521.5 sq. feet)



Total area: approx. 48.4 sq. metres (521.5 sq. feet)

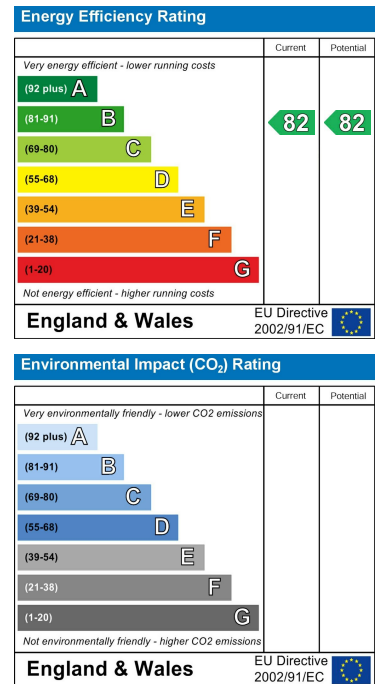
THE FLOORPLAN IS FOR ILLUSTRATIVE PURPOSES ONLY AND IS NOT TO SCALE. Measurements and features are approximate and may differ from the actual property. Verify all details independently; no liability is accepted for errors or omissions.

Property marketing provided by www.fotomarketing.co.uk

Area Map



Energy Efficiency Graph



These particulars, whilst believed to be accurate are set out as a general outline only for guidance and do not constitute any part of an offer or contract. Intending purchasers should not rely on them as statements of representation of fact, but must satisfy themselves by inspection or otherwise as to their accuracy. No person in this firm's employment has the authority to make or give any representation or warranty in respect of the property.