



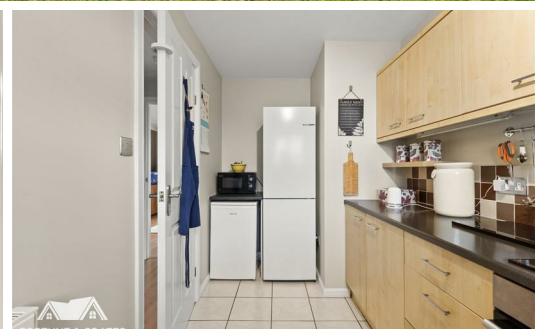
**FORTUNE & COATES**

The People's Estate Agent

<https://www.fortuneandcoates.co.uk>



FORTUNE & COATES



## 152 Sycamore Field, Harlow, CM19 5RX

**Guide price £325,000**

Guide Price: £325,000 - £350,000.

Fortune and Coates are delighted to offer to the market this three bedroom mid terraced family home situated in the sought after location of Sycamore Field, Harlow.

The home is well presented throughout and comprises an inviting entrance hallway with ample storage and leads to the dining room which is spacious and perfectly positioned opposite the modern kitchen which has a range of wall and base units, some integrated appliances and plenty of cupboard space. The lounge is bright and airy with lots of natural light, french doors that lead outside and door that open to the sunny and cosy conservatory.

Upstairs offers three well proportioned bedrooms with the primary having fitted wardrobes. The family shower room is modern with walk in shower, full length cupboard and heated towel rail.

Lounge 12'4" x 15'2" (3.76 x 4.63)

Kitchen 13'8" max x 6'3" (4.17 max x 1.93)

Dining Room 7'4" x 5'4" (2.25 x 1.63)

Conservatory 8'6" x 7'8" (2.61 x 2.34)

Bedroom 10'8" x 8'6" (3.27 x 2.6)

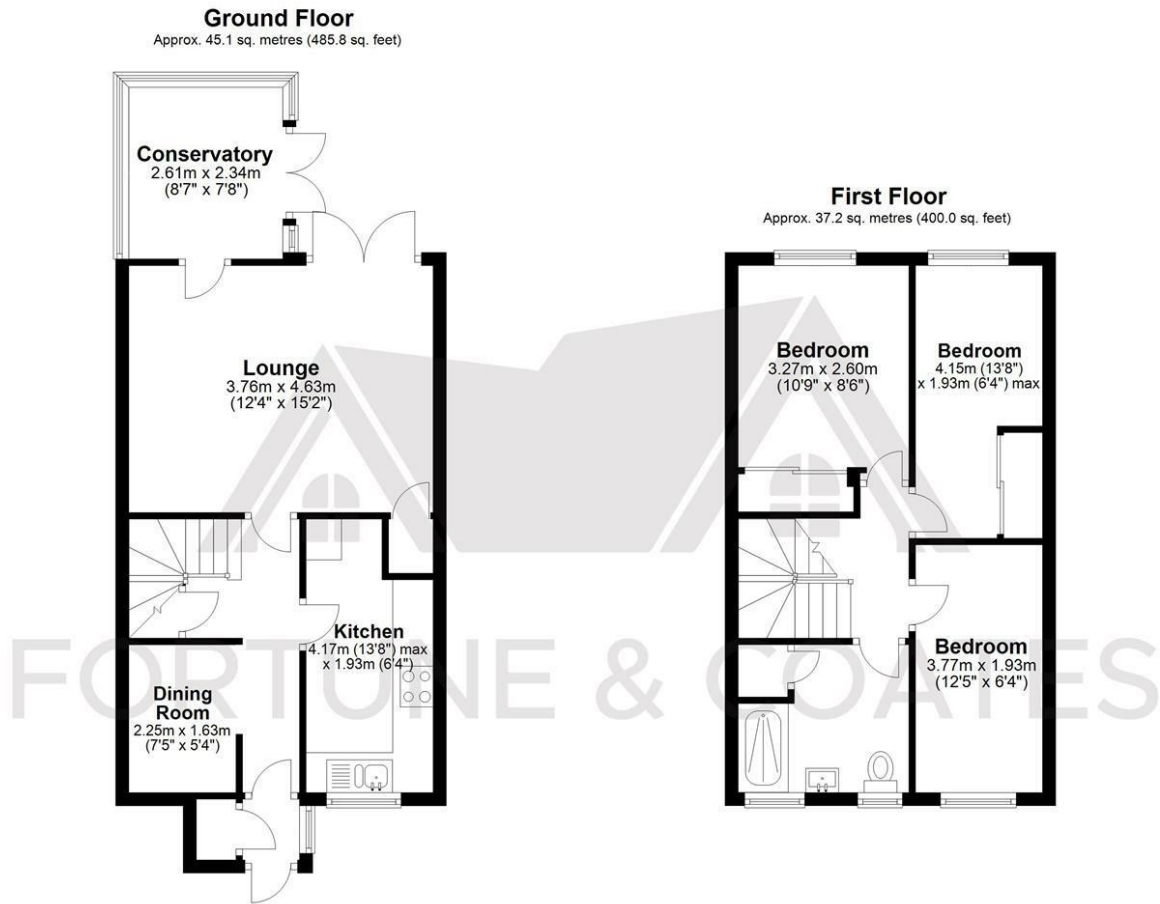
Bedroom 12'4" x 6'3" (3.77 x 1.93)

Bedroom 13'7" x 6'3" max (4.15 x 1.93 max)

AGENT NOTE: The information provided about this property does not constitute or form part of an offer or contract, nor may it be regarded as representations. All interested parties must verify accuracy and your solicitor must verify tenure/lease information, fixtures & fittings and, where the property has been extended/converted, planning/building regulation consents. All dimensions are approximate and quoted for guidance only as are floor plans which are not to scale and their accuracy cannot be confirmed. Reference to appliances and/or services does not imply that they are necessarily in working order or fit for the purpose



## Floor Plan

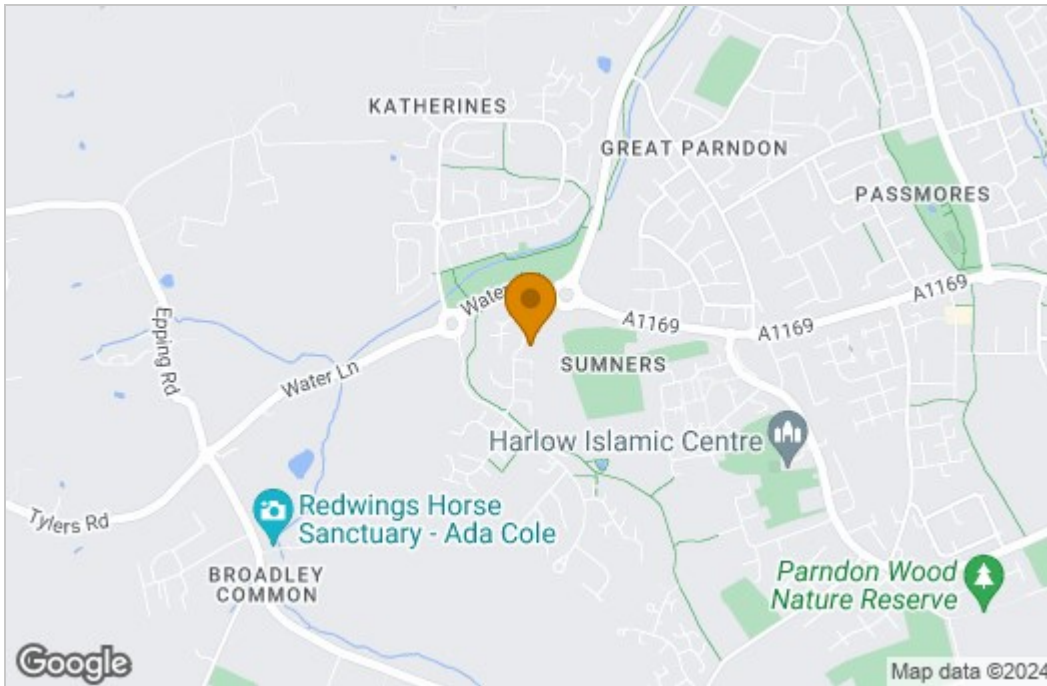


Total area: approx. 82.3 sq. metres (885.8 sq. feet)

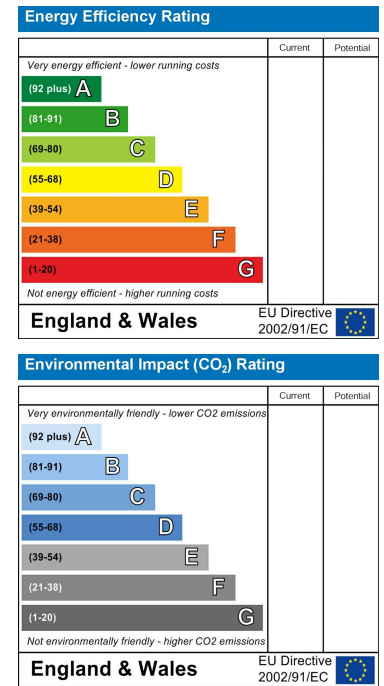
THE FLOORPLAN IS FOR ILLUSTRATIVE PURPOSES ONLY AND IS NOT TO SCALE. Measurements and features are approximate and may differ from the actual property. Verify all details independently; no liability is accepted for errors or omissions.

Property marketing provided by [www.fotomarketing.co.uk](http://www.fotomarketing.co.uk)

## Area Map



## Energy Efficiency Graph



These particulars, whilst believed to be accurate are set out as a general outline only for guidance and do not constitute any part of an offer or contract. Intending purchasers should not rely on them as statements of representation of fact, but must satisfy themselves by inspection or otherwise as to their accuracy. No person in this firm's employment has the authority to make or give any representation or warranty in respect of the property.